

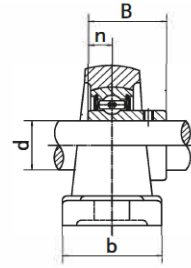
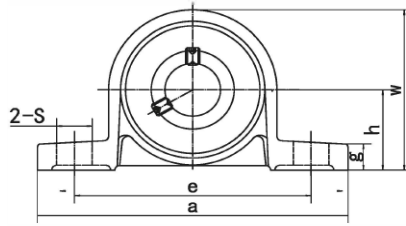
# ALUMINIUM MINIATUUR STAANDE LAGERBLOKKEN

## ALUMINIUM MINIATURE PILLOW BLOCK UNITS

Aluminium lagerblokken / chromstalen inserts / KP000 - KP006 & UP000 - UP006

# KP

Stelbout



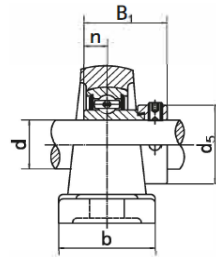
KP000



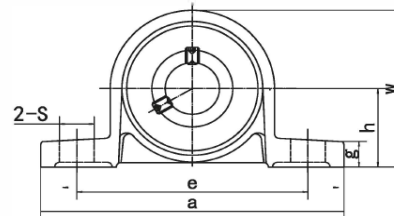
Type	Code		Afmetingen ( mm / in. )										Bout	Lagertype	Huis	Gewicht (kg)
	Koyo	Eco	d	h	a	e	b	S	g	w	B	n				
KP000	250000000	251000000	10 23/32	18 3/4	67 2-41/64	53,0 2-3/32	16,0 5/8	7,0 9/32	6,0 15/64	35,0 1-3/8	14,0	4,0 0,157	M6	K000	P000	0,07
KP001	250001000	251001000	12 3/4	19 3/4	71 2-51/64	56,0 2-13/64	16,0 5/8	7,0 9/32	6,0 15/64	38,0 1-1/2	14,5 0,571	4,0 0,157	M6	K001	P001	0,09
KP002	250002000	251002000	15 7/8	22 7/8	80 3-5/32	63,0 2-31/64	16,0 5/8	7,0 9/32	7,0 9/32	43,0 1-11/16	16,5	4,5 0,177	M6	K002	P002	0,13
KP003	250003000	251003000	17 15/16	24 15/16	85 3-11/32	67,0 2-41/64	18,0 23/32	7,0 9/32	7,0 9/32	47,0 1-27/37	17,5 0,689	5,0 0,197	M6	K003	P003	0,16
KP004	250004000	251004000	20 1-3/32	28 1-3/32	100 3-15/16	80,0 3-5/32	20,0 25/32	9,0 23/64	9,0 23/64	55,0 2-11/64	21,0	6,0 0,236	M8	K004	P004	0,23
KP005	250005000	251005000	25 1-17/64	32 1-17/64	112 4-13/32	90,0 3-35/64	20,0 25/32	10,0 25/64	10,0 25/64	62,0 2-7/16	22,5 0,886	6,5 0,256	M8	K005	P005	0,29
KP006	250006000	251006000	30 5-13/64	36 5-13/64	132 5-13/64	106,0 4-11/64	26,0 1-1/32	13,0 33/64	11,0 7/16	70,0 2-3/4	24,5	6,5 0,256	M10	K006	P006	0,45

# UP

Excentrische klemring



UP000



Type	Code	Afmetingen ( mm / in. )											Bout	Lagertype	Huis	Gewicht (kg)
	Eco	d	h	a	e	b	S	g	w	B1	n	d5				
UP000	253000000	10 23/32	18 3/4	67 2-41/64	53,0 2-3/32	16,0 5/8	7,0 9/32	6,0 15/64	35,0 1-3/8	17,5	4,0 0,157	17,0 43/64	M6	U000	P000	0,08
UP001	253001000	12 3/4	19 3/4	71 2-51/64	56,0 2-13/64	16,0 5/8	7,0 9/32	6,0 15/64	38,0 1-1/2	17,5 0,689	4,0 0,157	19,0 3/4	M6	U001	P001	0,09
UP002	253002000	15 7/8	22 7/8	80 3-5/32	63,0 2-31/64	16,0 5/8	7,0 9/32	7,0 9/32	43,0 1-11/16	18,5	4,5 0,177	22,0 65/64	M6	U002	P002	0,13
UP003	253003000	17 15/16	24 15/16	85 3-11/32	67,0 2-41/64	18,0 23/32	7,0 9/32	7,0 9/32	47,0 1-27/37	20,5 0,807	5,0 0,197	25,0 31/32	M6	U003	P003	0,16
UP004	253004000	20 1-3/32	28 1-3/32	100 3-15/16	80,0 3-5/32	20,0 25/32	9,0 23/64	9,0 23/64	55,0 2-11/64	24,5	6,0 0,236	30,0 1-3/16	M8	U004	P004	0,23
UP005	253005000	25 1-17/64	32 1-17/64	112 4-13/32	90,0 3-35/64	20,0 25/32	10,0 25/64	10,0 25/64	62,0 2-7/16	25,5 1	6,5 0,2559	36,0 1-27/64	M8	U005	P005	0,29
UP006	253006000	30 5-13/64	36 5-13/64	132 5-13/64	106,0 4-11/64	26,0 1-1/32	13,0 33/64	11,0 7/16	70,0 2-3/4	26,5	6,5 0,256	42,0 1-21/32	M10	U006	P006	0,45