

KETTINGGELEIDINGSPROFIELEN

CHAIN GUIDE RAILS

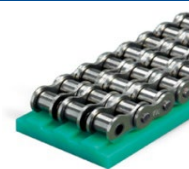
Polyetheleen geleidingsprofielen per 2 mt. / Type: T



T - simplex



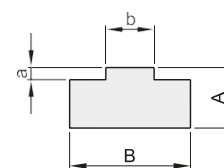
T - duplex



T - triplex

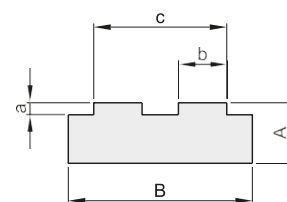
Profiel "T" Simplex

Type	Steek	Code	ISO	B	A	b	a	kg./mt
T 0	3/8" x 7/32"	B6011013301	06B1	15	10	5,4	1,5	0,13
T 1	1/2" x 5/16"	B6011013401	08B1	20	10	7,4	2,2	0,18
T 1	1/2" x 5/16"	B6011013402	08B1	20	15	7,4	2,2	0,26
T 1	1/2" x 5/16"	B6011013403	08B1	20	20	7,4	2,2	0,34
T 2	5/8" x 3/8"	B6011013501	10B1	20	10	9,2	2,6	0,16
T 2	5/8" x 3/8"	B6011013502	10B1	20	15	9,2	2,6	0,25
T 2	5/8" x 3/8"	B6011013503	10B1	20	20	9,2	2,6	0,33
T 3	3/4" x 7/16"	B6011013601	12B1	25	10	11,3	2,4	0,20
T 3	3/4" x 7/16"	B6011013602	12B1	25	15	11,3	2,4	0,32
T 3	3/4" x 7/16"	B6011013603	12B1	25	20	11,3	2,4	0,43
T 4	1" x 17,02	B6011013801	16B1	40	15	16,5	3,5	0,45
T 4	1" x 17,02	B6011013802	16B1	40	20	16,5	3,5	0,68
T 5	1" 1/4 x 3/4"	B6011014001	20B1	45	15	19,0	4,3	0,55
T 5	1" 1/4 x 3/4"	B6011014002	20B1	45	20	19,0	4,3	0,77
T 6	1" 1/2 x 1"	B6011014201	24B1	60	15	24,6	5,6	0,67
T 6	1" 1/2 x 1"	B6011014202	24B1	60	20	24,6	5,6	0,97
T 7	1" 3/4 x 1" 1/4	B6011014401	28B1	75	20	30,0	6,9	
T 8	2" x 1" 1/4	B6011014601	32B1	80	20	30,0	7,8	



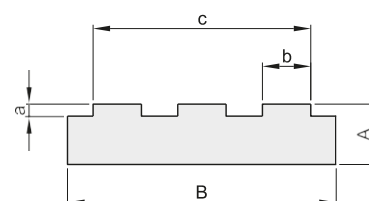
Profiel "T" Duplex

Type	Steek	Code	ISO	B	A	b	a	c	kg./mt
T 0.2	3/8" x 7/32"	B6011023301	06B2	25	10	5,4	1,5	15,74	0,22
T 1.2	1/2" x 5/16"	B6011023401	08B2	35	10	7,4	2,2	21,42	0,30
T 1.2	1/2" x 5/16"	B6011023402	08B2	35	15	7,4	2,2	21,42	0,46
T 1.2	1/2" x 5/16"	B6011023403	08B2	35	20	7,4	2,2	21,42	0,63
T 2.2	5/8" x 3/8"	B6011023501	10B2	40	10	9,2	2,6	25,79	0,32
T 2.2	5/8" x 3/8"	B6011023502	10B2	40	15	9,2	2,6	25,79	0,54
T 2.2	5/8" x 3/8"	B6011023503	10B2	40	20	9,2	2,6	25,79	0,77
T 3.2	3/4" x 7/16"	B6011023601	12B2	45	15	11,3	2,4	30,76	0,62
T 3.2	3/4" x 7/16"	B6011023602	12B2	45	20	11,3	2,4	30,76	0,85
T 4.2	1" x 17,02	B6011023801	16B2	65	15	16,5	3,5	48,38	0,86
T 4.2	1" x 17,02	B6011023802	16B2	65	20	16,5	3,5	48,38	1,19
T 5.2	1" 1/4 x 3/4"	B6011024001	20B2	70	15	19,0	4,3	54,45	0,89
T 5.2	1" 1/4 x 3/4"	B6011024002	20B2	70	20	19,0	4,3	54,45	1,22
T 6.2	1" 1/2 x 1"	B6011024201	24B2	88	20	24,6	5,6	72,96	1,48
T 7.2	1" 3/4 x 1" 1/4	B6011024401	28B2	105	25	30,0	6,9	89,56	
T 8.2	2" x 1" 1/4	B6011024601	32B2	105	30	30,0	7,8	88,55	



Profiel "T" Triplex

Type	Steek	Code	ISO	B	A	b	a	c	kg./mt
T 0.3	3/8" x 7/32"	B6011033301	06B3	35	10	5,4	1,5	25,88	0,77
T 1.3	1/2" x 5/16"	B6011033401	08B3	45	10	7,4	2,2	35,24	0,82
T 1.3	1/2" x 5/16"	B6011033402	08B3	45	15	7,4	2,2	35,24	1,06
T 1.3	1/2" x 5/16"	B6011033403	08B3	45	20	7,4	2,2	35,24	1,27
T 2.3	5/8" x 3/8"	B6011033501	10B3	55	10	9,2	2,6	42,38	0,85
T 2.3	5/8" x 3/8"	B6011033502	10B3	55	15	9,2	2,6	42,38	1,13
T 2.3	5/8" x 3/8"	B6011033503	10B3	55	20	9,2	2,6	42,38	1,40
T 3.3	3/4" x 7/16"	B6011033601	12B3	60	15	11,3	2,4	50,22	0,86
T 3.3	3/4" x 7/16"	B6011033602	12B3	60	20	11,3	2,4	50,22	1,16
T 4.3	1" x 17,02	B6011033801	16B3	95	20	16,5	3,5	80,26	1,75



KETTINGGELEIDINGSPROFIELEN

CHAIN GUIDE RAILS

Polyetheleen geleidingsprofielen per 2 mt. / Type: E, BL, U, CT



E - simplex



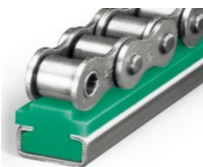
E - duplex



BL - simplex



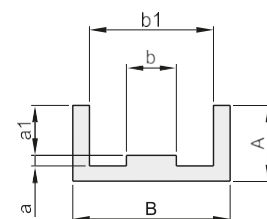
U - simplex



CT - simplex

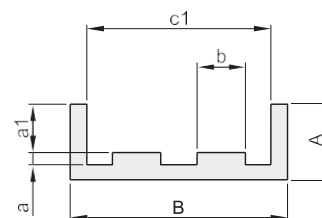
Profiel "E" Simplex (TS)

Type	Steek	Code	ISO	B	A	a	a1	b	c1	kg./mt
E 0	3/8" x 7/32"	B6011043301	06B1	25	10	1,5	4,35	5,4	15	0,17
E 1	1/2" x 5/16"	B6011043401	08B1	30	15	2,2	7,17	7,4	20	0,27
E 2	5/8" x 3/8"	B6011043501	10B1	33	20	2,6	9,45	9,2	23	0,39
E 3	3/4" x 7/16"	B6011043601	12B1	38	20	2,4	11,11	11,3	28	0,39
E 4	1" x 17,02	B6011043801	16B1	51	25	3,5	16,48	16,5	41	0,46



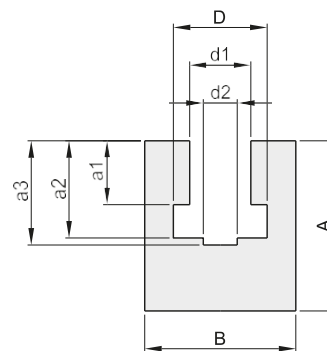
Profiel "E" Duplex (TS)

Type	Steek	Code	ISO	B	A	a	a1	b	c1	kg./mt
E 0.2	3/8" x 7/32"	B6011053301	06B2	36	15	1,5	4,35	5,4	26	0,43
E 1.2	1/2" x 5/16"	B6011053401	08B2	45	20	2,2	7,17	7,4	35	0,59
E 2.2	5/8" x 3/8"	B6011053501	10B2	50	25	2,6	9,45	9,2	40	0,77
E 3.2	3/4" x 7/16"	B6011053601	12B2	56	25	2,4	11,11	11,3	46	0,80
E 4.2	1" x 17,02	B6011053801	16B2	85	30	3,5	16,48	16,5	75	1,12



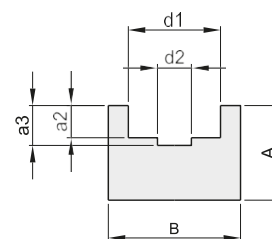
Profiel "BL" Simplex (K)

Type	Steek	Code	ISO	B	A	a1	a2	a3	d1	D	d2	kg./mt
BL 0	3/8" x 7/32"	B6011073301	06B1	20	25	5,6	8,7	10,0	6,6	9,3	4,0	0,43
BL 1	1/2" x 5/16"	B6011073401	08B1	24	30	7,6	11,5	13,5	8,7	12,8	5,0	0,55
BL 2	5/8" x 3/8"	B6011073501	10B1	30	35	9,5	13,5	14,8	10,4	15,4	6,0	0,83
BL 3	3/4" x 7/16"	B6011073601	12B1	40	35	11,5	15,9	17,5	12,3	16,9	7,0	1,10
BL 4	1" x 17,02	B6011073801	16B1	40	45	16,9	25,7	26,8	16,1	24,4	9,0	1,22
BL 5	1" 1/4 x 3/4"	B6011074001	20B1	50	50	19,4	29,3	31,2	19,3	27,5	11,0	
BL 6	1" 1/2 x 1"	B6011074201	24B1	60	60	25,2	38,2	40,1	25,7	36,5	16,0	
BL 7	1" 3/4 x 1" 1/4	B6011074401	28B1	60	70	30,8	46,9	48,9	28,3	41,5	17,0	
BL 8	2" x 1" 1/4	B6011074601	32B1	70	75	30,8	47,3	53,0	29,6	44,5	19,0	



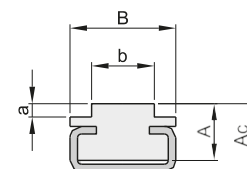
Profiel "U" Simplex

Type	Steek	Code	ISO	B	A	a	a1	b	c1	kg./mt
U 0	3/8" x 7/32"	B6011083301	06B1	20	15	2,8	4,20	9,2	4	0,26
U 1	1/2" x 5/16"	B6011083401	08B1	25	15	3,5	4,80	12,7	5	0,31
U 2	5/8" x 3/8"	B6011083501	10B1	25	15	3,6	5,10	15,2	6	0,30
U 3	3/4" x 7/16"	B6011083601	12B1	25	20	3,9	5,70	16,7	7	0,40
U 4	1" x 17,02	B6011083801	16B1	35	25	8,4	10,00	24,4	9	0,63



Profiel "CT" Simplex

Type	Steek	Code	ISO	B	A	a	b	Ac	kg./mt
T 0 C3 A 15	3/8" x 7/32"	B6011113301	06B1	20	15	1,5	5,4	17	0,69
T 1 C3 A 15	1/2" x 5/16"	B6011113401	08B1	20	15	2,2	7,4	17	0,68
T 2 C3 A 15	5/8" x 3/8"	B6011113501	10B1	20	15	2,6	9,2	17	0,67
T 3 C3 A 15	3/4" x 7/16"	B6011113601	12B1	20	15	2,4	11,3	17	0,68
T 4 C5 A 15	1" x 17,02	B6011113801	16B1	28	15	3,5	16,5	18	0,93
T 5 C9 A 20	1 1/4" x 3/4"	B6011114001	20B1	38	20	4,3	19,0	27	1,51



KETTINGGELEIDINGSPROFIELEN

CHAIN GUIDE RAILS

Polyetheleen geleidingsprofielen per 2 mt. / Type: CT, C10, A-R, stalen profielen



CT - duplex



C10 - simplex



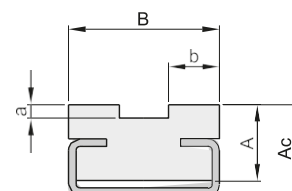
A-R - simplex



C profiel

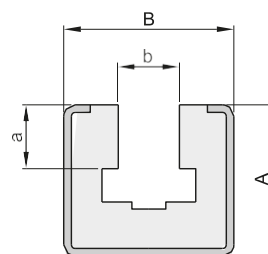
Profiel "CT" Duplex

Type	SteeK	Code	ISO	B	A	b	a	Ac	kg./mt
T 0.2 C3 A 15	3/8" x 7/32"	B6011123301	06B2	15,7	15	5,4	1,5	17	0,66
T 1.2 C3 A 15	1/2" x 5/16"	B6011123401	08B2	21,4	15	7,4	2,2	17	0,70
T 2.2 C5 A 15	5/8" x 3/8"	B6011123501	10B2	25,9	15	9,2	2,6	19	0,95
T 3.2 C5 A 15	3/4" x 7/16"	B6011123601	12B2	30,7	15	11,3	2,4	19	0,97
T 4.2 C9 A 20	1" x 17,02	B6011123801	16B2	48,3	20	16,5	3,5	27	1,61



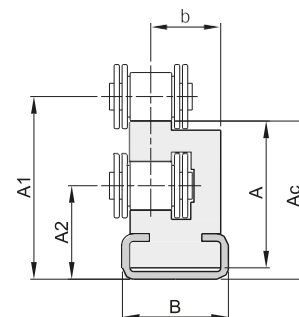
Profiel "C10" Simplex (CKG)

Type	SteeK	Code	ISO	B	A	b	a	kg./mt
C 10.0	3/8" x 7/32"	B6011143301	06B1	30	24	6,6	5,6	1,39
C 10.1	1/2" x 5/16"	B6011143401	08B1	30	24	8,7	7,6	1,33
C 10.2	5/8" x 3/8"	B6011143501	10B1	30	24	10,4	9,5	1,29
C 10.3	3/4" x 7/16"	B6011143601	12B1	30	24	12,3	11,5	1,23
C 11.4	1" x 17,02	B6011143801	16B1	45	40	16,1	16,9	2,92



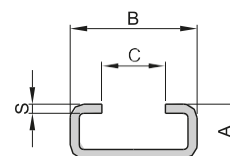
Profiel "COMBI A-R" Simplex (ETA)

Type	SteeK	Code	ISO	Prof. met.	A	B	A1	A2	Ac	b	kg./mt
COMBI 0	3/8" x 7/32"	B6011153301	06B1	C 3	26,4	20	31,6	19,5	28,4	17,3	0,84
COMBI 1	1/2" x 5/16"	B6011153401	08B1	C 3	28,0	20	34,8	18,9	30,5	16,5	0,81
COMBI 2	5/8" x 3/8"	B6011153501	10B1	C 3	34,4	20	41,1	21,2	36,0	15,5	0,87
COMBI 3	3/4" x 7/16"	B6011153601	12B1	C 5	38,5	28	47,5	24,8	41,5	22,3	1,36
COMBI 4	1" x 17,02	B6011153801	16B1	C 9	52,4	38	69,4	34,0	61,4	29,7	2,25



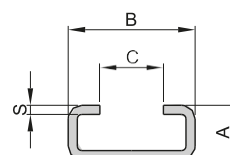
Profiel "C" gegalvaniseerd

Type	Code	A	B	C	S	kg./mt
C3	B6011180003	10	20	10	1,5	0,46
C5	B6011180005	12	28	14	1,5	0,64
C9	B6011180009	18	38	22	1,5	0,93
C10	B6011180010	24	30	20	1,5	0,89
C11	B6011180011	40	45	31	2,0	1,96



Profiel "C" RVS

Type	Code	A	B	C	S	kg./mt
C3	B6011190003	10	20	10	1,5	0,46
C5	B6011190005	12	28	14	1,5	0,64
C9	B6011190009	18	38	22	1,5	0,93
C10	B6011190010	24	30	20	1,5	0,89



Eigenschappen polyethyleen

Materiaal : PE-UHMW Polyethyleen met hoge dichtheid

Bedrijfstemperatuur : tot ~80° C

Gewicht : 0,94 gr/cm³

Thermische uitzetting : mm/° c 2 x 10⁻⁴

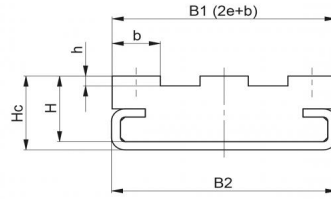
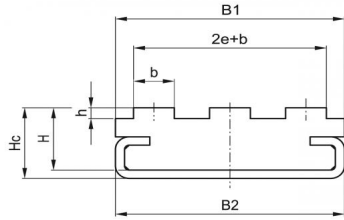
Hardheid : Shore D 64/67

(2 mm/mt voor elke 10° C)

KETTINGGELEIDINGSPROFIELEN OP AANVRAAG

CHAIN GUIDE RAILS ON REQUEST

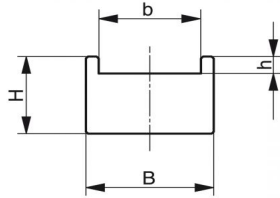
Polyetheleen geleidingsprofielen per 2 mt. / Type: overig



CT triplex - op aanvraag

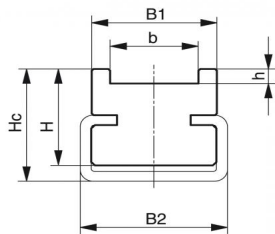
Tekening 1: 06B3 t/m 10B3

Tekening 2: 12B3 t/m 20B3



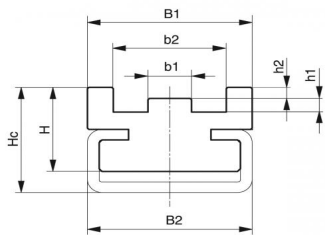
TU simplex - op aanvraag

06B1 & 083-1



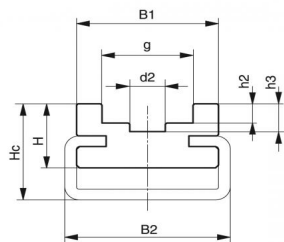
CTU simplex - op aanvraag

06B1 & 083-1



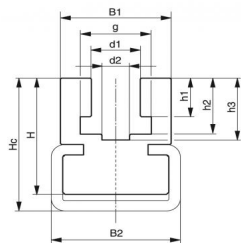
CTS simplex - op aanvraag

06B1 t/m 20B1



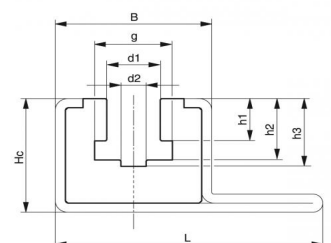
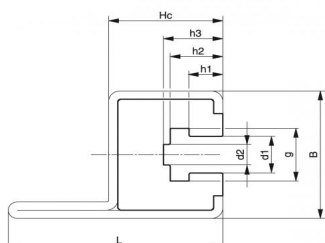
CU simplex - op aanvraag

06B1 t/m 32B1



CK simplex - op aanvraag

06B1 t/m 32B1



CKG 14H - op aanvraag

06B1 t/m 12B1

CKG 15V - op aanvraag

06B1 t/m 12B1