

# KETTINGWIELEN MET GEHARDE TANDEN SPROCKETS WITH HARDENED TEETH

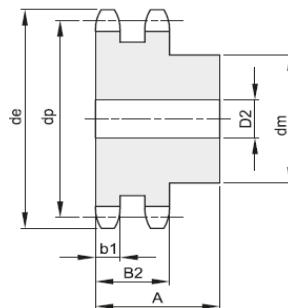
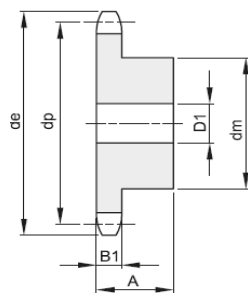
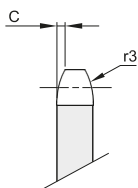
Simplex & duplex

**3/8" x 7/32"**

9,525 x 5,72 mm

Rol diam. 6,35 mm

**06B-1-2**



B1	B2	B3	b1	C	r3
5,3	15,4		5,2	1	10

Materiaal: staal C45 - Tanden: HRc 50



Z	de	dp	Simplex			Duplex				
			Code	dm	D1	A	Code	dm	D2	A
13	43,5	39,80	B191330013	28	8	25	B192330013	28	10	30
14	46,5	42,80	B191330014	31	8	25	B192330014	31	10	30
15	49,5	45,81	B191330015	34	8	25	B192330015	34	10	30
16	52,5	48,82	B191330016	37	10	28	B192330016	37	12	30
17	55,5	51,83	B191330017	40	10	28	B192330017	40	12	30
18	58,6	54,85	B191330018	43	10	28	B192330018	43	12	30
19	61,6	57,87	B191330019	45	10	28	B192330019	46	12	30
20	64,6	60,89	B191330020	46	10	28	B192330020	49	12	30
21	67,6	63,91	B191330021	48	12	28	B192330021	52	16	30
22	70,6	66,93	B191330022	50	12	28	B192330022	55	16	30
23	73,7	69,95	B191330023	52	12	28	B192330023	58	16	30
24	76,7	72,97	B191330024	54	12	28	B192330024	61	16	30
25	79,7	76,00	B191330025	57	12	28	B192330025	64	16	30
30	94,8	91,12	B191330030	60	12	30	B192330030	79	16	30

# KETTINGWIELEN MET GEHARDE TANDEN SPROCKETS WITH HARDENED TEETH

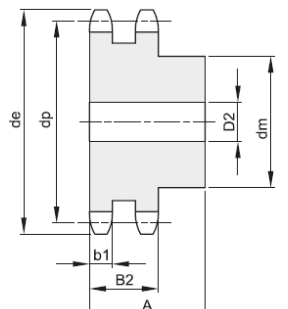
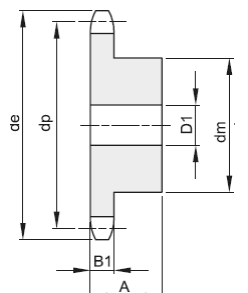
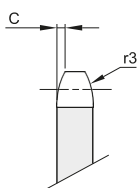
Simplex & duplex

**1/2" x 5/16"**

12,7 x 7,75 mm

Rol diam. 8,51 mm

**08B-1-2**



B1	B2	B3	b1	C	r3
7,2	21		7	1,3	13

Materiaal: staal C45 - Tanden: HRc 50



Z	de	dp	Simplex			Duplex				
			Code	dm	D1	A	Code	dm	D2	A
12	53,9	49,07	B191340012	33	10	28	B192340012	35	12	35
13	57,9	53,06	B191340013	37	10	28	B192340013	38	12	35
14	61,9	57,07	B191340014	41	10	28	B192340014	42	12	35
15	65,9	61,09	B191340015	45	10	28	B192340015	46	12	35
16	69,9	65,10	B191340016	50	12	28	B192340016	50	16	38
17	74,0	69,11	B191340017	52	12	28	B192340017	54	16	38
18	78,0	73,14	B191340018	56	12	28	B192340018	58	16	38
19	82,0	77,16	B191340019	60	12	28	B192340019	62	16	38
20	86,0	81,19	B191340020	64	12	28	B192340020	66	16	38
21	90,1	85,22	B191340021	68	14	28	B192340021	70	16	40
22	94,1	89,24	B191340022	70	14	28	B192340022	70	16	40
23	98,1	93,27	B191340023	70	14	28	B192340023	70	16	40
24	102,1	97,29	B191340024	70	14	28	B192340024	75	16	40
25	106,2	101,33	B191340025	70	14	28	B192340025	80	16	40
30	126,3	121,50	B191340030	80	16	30	B192340030	100	16	40

# KETTINGWIELEN MET GEHARDE TANDEN SPROCKETS WITH HARDENED TEETH

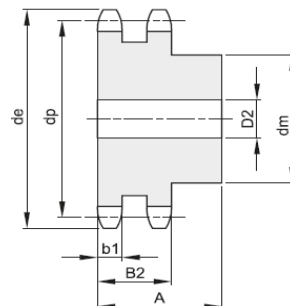
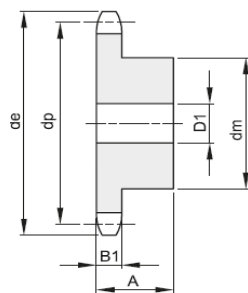
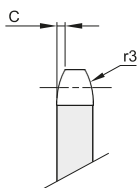
Simplex & duplex

**5/8" x 3/8"**

15,875 x 9,65 mm

Rol diam. 10,16 mm

**10B-1-2**



B1	B2	B3	b1	C	r3
9,1	25,5		9	1,6	16

Materiaal: staal C45 - Tanden: HRc 50



Z	de	dp	Simplex			Duplex				
			Code	dm	D1	A	Code	dm	D2	A
12	68,2	61,34	B191350012	42	12	30	B192350012	44	16	40
13	73,2	66,32	B191350013	47	12	30	B192350013	49	16	40
14	78,2	71,34	B191350014	52	12	30	B192350014	54	16	40
15	83,2	76,36	B191350015	57	12	30	B192350015	59	16	40
16	88,3	81,37	B191350016	60	12	30	B192350016	64	16	45
17	93,3	86,39	B191350017	60	12	30	B192350017	69	16	45
18	98,3	91,42	B191350018	70	14	30	B192350018	74	16	45
19	103,3	96,45	B191350019	70	14	30	B192350019	79	16	45
20	108,4	101,49	B191350020	75	14	30	B192350020	84	16	45
21	113,4	106,52	B191350021	75	16	30	B192350021	85	16	45
22	118,4	111,55	B191350022	80	16	30	B192350022	90	16	45
23	123,5	116,58	B191350023	80	16	30	B192350023	95	16	45
24	128,5	121,62	B191350024	80	16	30	B192350024	100	16	45
25	133,6	126,66	B191350025	80	16	30	B192350025	105	16	45
30	158,8	151,87	B191350030	90	20	35	B192350026	120	20	45

# KETTINGWIELEN MET GEHARDE TANDEN SPROCKETS WITH HARDENED TEETH

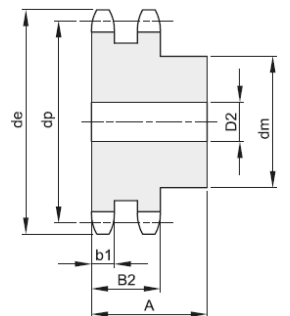
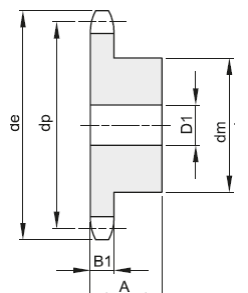
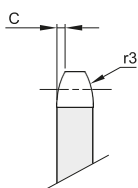
Simplex & duplex

**3/4" x 7/16"**

19,50 x 11,68 mm

Rol diam. 12,07 mm

**12B-1-2**



B1	B2	B3	b1	C	r3
11,1	30,3		10,8	2	19

Materiaal: staal C45 - Tanden: HRc 50



Z	de	dp	Simplex			Duplex				
			Code	dm	D1	A	Code	dm	D2	A
12	81,8	73,60	B191360012	52	16	35	B192360012	53	16	50
13	87,8	79,59	B191360013	58	16	35	B192360013	59	16	50
14	93,8	85,61	B191360014	64	16	35	B192360014	65	16	50
15	99,8	91,63	B191360015	70	16	35	B192360015	71	16	50
16	105,8	97,65	B191360016	75	16	35	B192360016	77	20	50
17	111,9	103,67	B191360017	80	16	35	B192360017	83	20	50
18	117,9	109,71	B191360018	80	16	35	B192360018	89	20	50
19	123,9	115,75	B191360019	80	16	35	B192360019	95	20	50
20	130,0	121,78	B191360020	80	16	35	B192360020	100	20	50
21	136,0	127,82	B191360021	90	20	40	B192360021	100	20	50
22	142,0	133,86	B191360022	90	20	40	B192360022	100	20	50
23	148,1	139,90	B191360023	90	20	40	B192360023	110	20	50
24	154,1	145,94	B191360024	90	20	40	B192360024	110	20	50
25	160,2	152,00	B191360025	90	20	40	B192360025	120	20	50
30	190,4	182,25	B191360030	95	20	40	B192360030	120	20	50

# KETTINGWIELEN MET GEHARDE TANDEN SPROCKETS WITH HARDENED TEETH

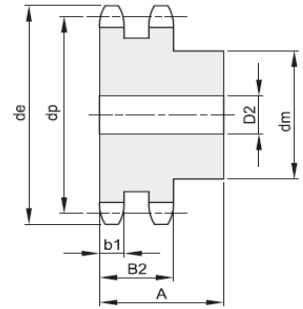
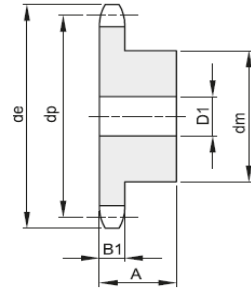
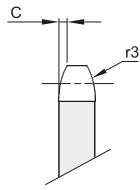
Simplex & duplex

**1" x 17,02mm**

25,4 x 17,02 mm

Rol diam. 15,88 mm

**16B-1-2**



B1	B2	B3	b1	C	r3
16,2	47,7		15,8	2,5	26

Materiaal: staal C45 - Tanden: HRc 50



Z	de	dp	Simplex				Duplex			
			Code	dm	D1	A	Code	dm	D2	A
12	109,7	98,14	B191380012	69	16	40	B192380012	72	20	70
13	117,7	106,12	B191380013	78	16	40	B192380013	80	20	70
14	125,7	114,15	B191380014	84	16	40	B192380014	88	20	70
15	133,7	122,17	B191380015	92	16	40	B192380015	96	20	70
16	141,8	130,20	B191380016	100	20	45	B192380016	104	20	70
17	149,8	138,22	B191380017	100	20	45	B192380017	112	20	70
18	157,8	146,28	B191380018	100	20	45	B192380018	120	20	70
19	165,9	154,33	B191380019	100	20	45	B192380019	128	20	70
20	173,9	162,38	B191380020	100	20	45	B192380020	130	20	70
21	182	170,43	B191380021	110	20	50	B192380021	130	25	70
22	190,1	178,48	B191380022	110	20	50	B192380022	130	25	70
23	198,1	186,53	B191380023	110	20	50	B192380023	130	25	70
24	206,2	194,59	B191380024	110	20	50	B192380024	130	25	70
25	214,2	202,66	B191380025	110	20	50	B192380025	130	25	70
30	254,6	243,00	B191380030	120	20	50	B192380030	130	25	70