

THERMOPLAST NYLON TANDWIELEN

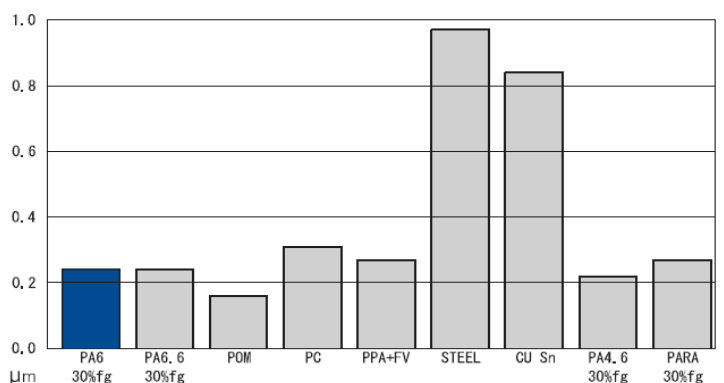
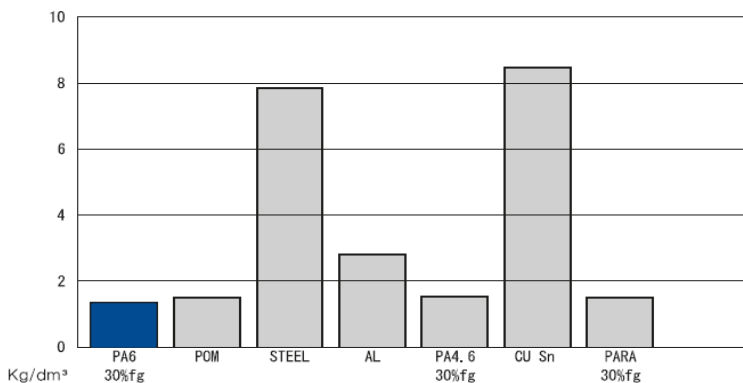
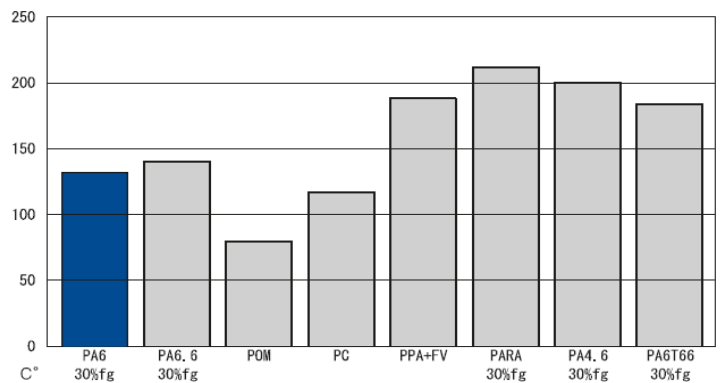
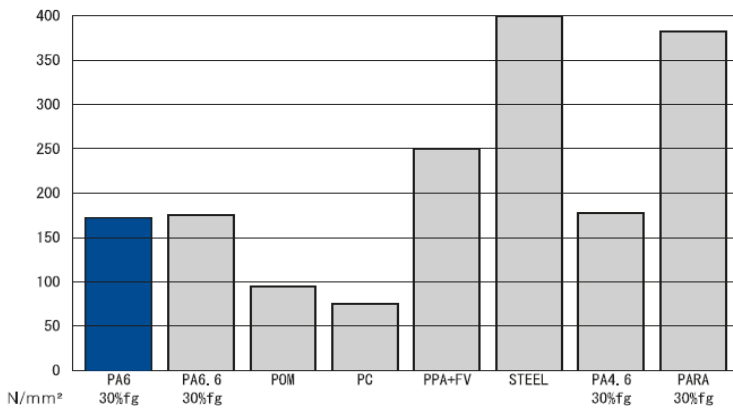
THERMOPLASTIC NYLON GEARS

Cilindrische en conische tandwielen van thermoplast NYLON PA 6 met 30% grijze glasvezel



Eigenschappen

- Hoge mechanische sterkte, stijfheid, hardheid en taaiheid
- Hoge weerstand tegen torsie
- Goed bestand tegen moeheid
- Hoge mechanische demping
- Goed glijdend vermogen
- Uitstekende weerstand tegen slijtage en chemicaliën
- Goede elektrische isolatie-eigenschappen

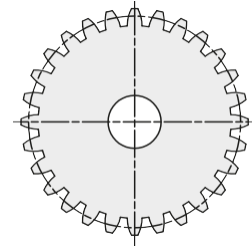
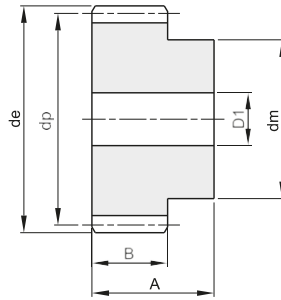


KUNSTSTOF TANDWIELEN NYLON CYLINDRICAL GEARS

Thermoplastic materiaal

Module 1 Drukhoek 20°

A	B
25	15



Materiaal: Nylon PA6+Glasvezel



Z	Code	de	dp	dm	D1
10	PV401010010	12	10	12	-
12	PV401010012	14	12	9	4
13	PV401010013	15	13	10	4
14	PV401010014	16	14	10	4
15	PV401010015	17	15	10	4
16	PV401010016	18	16	13	5
17	PV401010017	19	17	14	5
18	PV401010018	20	18	14	5
19	PV401010019	21	19	14	5
20	PV401010020	22	20	16	5
21	PV401010021	23	21	16	5
22	PV401010022	24	22	18	5
23	PV401010023	25	23	18	6
24	PV401010024	26	24	20	6
25	PV401010025	27	25	20	6
26	PV401010026	28	26	22	6
27	PV401010027	29	27	22	6
28	PV401010028	30	28	22	6
29	PV401010029	31	29	25	6
30	PV401010030	32	30	25	6
31	PV401010031	33	31	25	6
32	PV401010032	34	32	25	6
33	PV401010033	35	33	25	6
34	PV401010034	36	34	30	8
35	PV401010035	37	35	30	8
36	PV401010036	38	36	30	8
37	PV401010037	39	37	30	8
38	PV401010038	40	38	30	8
39	PV401010039	41	39	30	8
40	PV401010040	42	40	30	8
41	PV401010041	43	41	30	8
42	PV401010042	44	42	35	10
43	PV401010043	45	43	35	10
44	PV401010044	46	44	35	10
45	PV401010045	47	45	35	10
47	PV401010047	49	47	35	10
48	PV401010048	50	48	35	10
49	PV401010049	51	49	35	10
50	PV401010050	52	50	35	10
52	PV401010052	54	52	35	14
55	PV401010055	57	55	35	14
56	PV401010056	58	56	35	14
58	PV401010058	60	58	35	14

Z	Code	de	dp	dm	D1
60	PV401010060	62	60	40	14
64	PV401010064	66	64	40	14
65	PV401010065	67	65	40	20
70	PV401010070	72	70	40	20
71	PV401010071	73	71	40	20
72	PV401010072	74	72	40	20
73	PV401010073	75	73	40	20
74	PV401010074	76	74	40	20
75	PV401010075	77	75	50	20
77	PV401010077	79	77	50	20
80	PV401010080	82	80	50	20
85	PV401010085	87	85	50	20
88	PV401010088	90	88	50	20
90	PV401010090	92	90	50	20
95	PV401010095	97	95	50	20
100	PV401010100	102	100	50	20
104	PV401010104	106	104	50	20
110	PV401010110	112	110	50	20
120	PV401010120	122	120	50	20

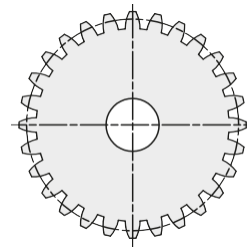
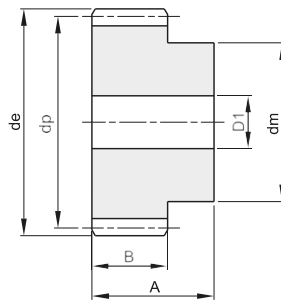
KUNSTSTOF TANDWIELEN NYLON CYLINDRICAL GEARS

Thermoplastic materiaal

Module 2

Drukhoek 20°

A	B
35	20



Materiaal: Nylon PA6+Glasvezel



Z	Code	de	dp	dm	D1
12	PV401020012	28	24	18	8
13	PV401020013	30	26	18	8
14	PV401020014	32	28	20	8
15	PV401020015	34	30	22	8
16	PV401020016	36	32	25	8
17	PV401020017	38	34	25	8
18	PV401020018	40	36	30	10
19	PV401020019	42	38	30	10
20	PV401020020	44	40	30	10
21	PV401020021	46	42	30	10
22	PV401020022	48	44	30	10
23	PV401020023	50	46	35	10
24	PV401020024	52	48	35	10
25	PV401020025	54	50	35	10
26	PV401020026	56	52	40	14
27	PV401020027	58	54	40	14
28	PV401020028	60	56	40	14
29	PV401020029	62	58	40	14
30	PV401020030	64	60	40	14
31	PV401020031	66	62	40	14
32	PV401020032	68	64	45	16
33	PV401020033	70	66	45	16
34	PV401020034	72	68	45	16
35	PV401020035	74	70	45	16
36	PV401020036	76	72	50	16
37	PV401020037	78	74	50	16
38	PV401020038	80	76	50	16
39	PV401020039	82	78	50	16
40	PV401020040	84	80	55	16
41	PV401020041	86	82	55	16
42	PV401020042	88	84	55	16
43	PV401020043	90	86	55	16
44	PV401020044	92	88	60	16
45	PV401020045	94	90	60	16
46	PV401020046	96	92	60	16
47	PV401020047	98	94	60	16
48	PV401020048	100	96	60	16
49	PV401020049	102	98	60	16
50	PV401020050	104	100	60	20
51	PV401020051	106	102	60	20
52	PV401020052	108	104	60	20
53	PV401020053	110	106	60	20
54	PV401020054	112	108	60	20

Z	Code	de	dp	dm	D1
55	PV401020055	114	110	60	20
56	PV401020056	116	112	60	20
57	PV401020057	118	114	60	20
58	PV401020058	120	116	60	20
59	PV401020059	122	118	60	20
60	PV401020060	124	120	60	20
61	PV401020061	126	122	60	20
62	PV401020062	128	124	60	20
63	PV401020063	130	126	60	20
64	PV401020064	132	128	60	20
65	PV401020065	134	130	60	20
66	PV401020066	136	132	60	20
67	PV401020067	138	134	60	20
68	PV401020068	140	136	60	20
69	PV401020069	142	138	60	20
70	PV401020070	144	140	60	20
71	PV401020071	146	142	60	20
72	PV401020072	148	144	60	20
73	PV401020073	150	146	60	20
74	PV401020074	152	148	60	20
75	PV401020075	154	150	60	20
76	PV401020076	156	152	60	20
77	PV401020077	158	154	60	20
78	PV401020078	160	156	60	20
79	PV401020079	162	158	60	20
80	PV401020080	164	160	60	20
81	PV401020081	166	162	60	20
82	PV401020082	168	164	60	20
83	PV401020083	170	166	60	20
84	PV401020084	172	168	60	20
85	PV401020085	174	170	60	20
86	PV401020086	176	172	60	20
87	PV401020087	178	174	60	20
88	PV401020088	180	176	60	20
89	PV401020089	182	178	60	20
90	PV401020090	184	180	60	20

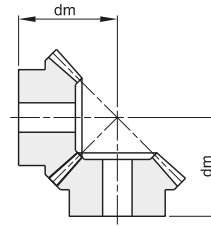
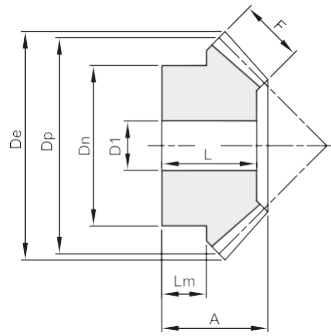
KUNSTSTOF CONISCHE TANDWIELEN MET RECHTE TAND

NYLON CONICAL STRAIGHT TOOTHED GEARS

Verhouding 1:1 & 1:2 - module 1 t/m 3,5

Verhouding 1:1

Drukhoek 20°



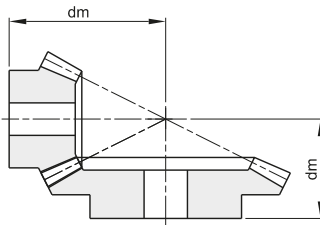
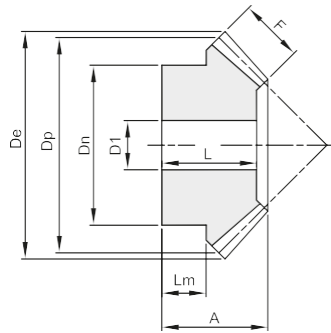
Materiaal: Nylon PA6+Glasvezel



Module	Code	Z	De	Dp	A	F	Dn	D1	dm	L	Lm	Kg.
1	PV421010016	16	17,4	16	14	4	13,5	5	18,6	14	9,5	0,002
1,5	PV421015016	16	26,1	24	18	5,5	20	8	25,1	18	12	0,006
1,5	PV421015020	20	32,1	30	20	10	22,5	6	28,7	20	8,5	0,011
1,5	PV421015030	30	47,1	45	25	10	34,5	12	39,7	25	13	0,030
2	PV421020016	16	34,8	32	20	9	25	9	28,8	20	9	0,012
2	PV421020020	20	42,8	40	27	13	32,5	9	35,7	27	13,5	0,028
2	PV421020030	30	62,8	60	30	16	50,5	12	47,8	30	12,8	0,074
2,5	PV421025016	16	43,5	40	28	10	30	12	37,3	28	15,5	0,025
2,5	PV421025020	20	53,5	50	30	12,5	38,5	12	45,9	26	16	0,043
2,5	PV421025030	30	78,5	35	35	18	51	14	59,1	31	15,5	0,107
3	PV421030016	16	52,2	48	31	13	38	11	44,2	31	16,2	0,043
3	PV421030020	20	64,2	60	35	18	43,5	14	51,1	35	15	0,071
3	PV421030030	30	94,2	90	40	22	61	20	68,1	36,5	18,5	0,178
3,5	PV421035020	20	74,9	70	38,5	22	56,5	14	58,6	35,5	16	0,117

Verhouding 1:2

Drukhoek 20°



Materiaal: Nylon PA6+Glasvezel



Module	Code	Z	De	Dp	A	F	Dn	D1	dm	L	Lm	Kg.
1,5	PV422015016	16	26,7	24	20	8	17,5	8	36,4	20	10,5	0,006
1,5	PV422015032	32	49,3	48	19,5	8	33	12	27,5	19,5	11,5	0,026
2	PV422020016	16	35,6	32	23	10	23,5	10	45,4	23	12,2	0,013
2	PV422020032	32	65,8	64	25	12	40,5	12	35,2	25	10	0,055
2,5	PV422025016	16	44,4	40	27,5	12	30	12	56	27,5	13,5	0,026
2,5	PV422025032	32	82,2	80	31	13	50	15	43,5	25,5	15,5	0,101
3	PV422030016	16	53,4	48	28	15	40,5	12	61,6	28	12	0,043
3	PV422030032	32	98,7	96	34,5	18	61	16	50,4	34,5	16	0,182