

PLAATSTALEN STAANDE LAGERBLOKKEN PRESSED HOUSING PILLOW BLOCK UNITS

Plaatstalen lagerblokken / SBPP201 - SBPP209 & SAPP201 - SAPP209

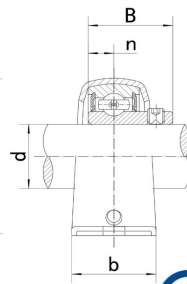
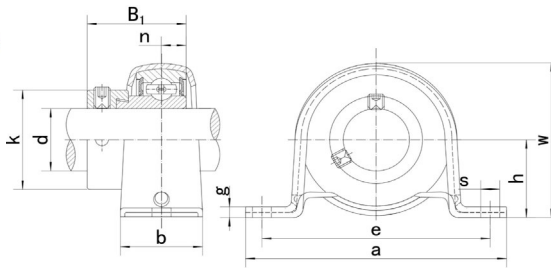
SBPP
met stelbout

SAPP

met excentrische klemring



SAPP



SBPP



Type	Code	Afmetingen (mm / in.)										Bout mm/in.	Lagertype	Huis	Gewicht (kg)
		d	h	a	e	b	s	g	w	B	n				
SBPP 201	240201000	12	22,2	86	68	25	9,5	3,2	43,8	22	6	M8	SB201	PP203	0,14
201-8	-	1/2	7/8	3-3/8	2-43/64	63/64	3/8	0.126	1-23/32	0.8661	0.2362	15/16	SB201-8		
SBPP 202	240202000	15	22,2	86	68	25	9,5	3,2	43,8	22	6	M8	SB202	PP203	0,14
202-9	-	9/16	7/8	3-3/8	2-43/64	63/64	3/8	0.126	1-23/32	0.8661	0.2362	15/16	SB202-9		
202-10	-	5/8											SB202-10		
SBPP 203	240203000	17	22,2	86	68	25	9,5	3,2	43,8	22	6	M8	SB203	PP203	0,14
203-11	-	11/16	7/8	3-3/8	2-43/64	63/64	3/8	0.126	1-23/32	0.8661	0.2362	15/16	SB203-11		
SBPP 204	240204000	20	25,4	98	76	32	9,5	3,2	50,5	25	7	M8	SB204	PP204	0,22
204-12	-	3/4	1	3-27/32	2-63/64	1-1/4	3/8	0.126	1-63/64	0.9843	0.2756	5/16	SB204-12		
SBPP 205	240205000	25	28,6	108	86	32	11,5	4,0	56,6	27	7,5	M10	SB205	PP205	0,28
205-13	-	13/16											SB205-13		
205-14	-	7/8	1-1/8	4-1/4	3-25/64	1-1/4	29/64	0.157	2-15/64	1.0630	0.2953	3/8	SB205-14		
205-15	-	15/16											SB205-15		
205-16	-	1											SB205-16		
SBPP 206	240206000	30	33,3	117	95	38	11,5	4,0	66,3	30	8	M10	SB206	PP206	0,42
206-17	-	1-1/16											SB206-17		
206-18	-	1-1/8	1-5/16	4-39/64	3-47/64	1-1/2	29/64	0.157	2-39/64	1.1811	0.3150	3/8	SB206-18		
206-19	-	1-3/16											SB206-19		
206-20	-	1-1/4											SB206-20		
SBPP 207	240207000	35	39,7	129	106	42	11,5	4,6	78,0	32	8,5	M10	SB207	PP207	0,63
207-20	-	1-1/4											SB207-20		
207-21	-	1-5/16	1-9/16	5-5/64	4-5/32	1-21/32	29/64	0.181	3-1/8	1.2598	0.3346	3/8	SB207-21		
207-22	-	1-3/8											SB207-22		
207-23	-	1-7/16											SB207-23		
SBPP 208	240208000	40	43,7	148	120	43	13,0	5,0	86,2	34	9	M12	SB208	PP208	0,76
208-24	-	1-1/2	1-23/32	5-53/64	4-47/64	1-11/16	33/64	0.197	3-25/64	1.3386	0.354	7/16	SB208-24		
208-25	-	1-9/16											SB208-25		
SBPP 209	240209000	45	46,8	156	128	45	13,0	6,0	92,3	41,2	10,2	M12	SB209	PP209	1,02
209-26	-	1-5/8	1-27/32	6-9/64	5-3/64	1-25/32	33/64	0.236	3-41/64	1.6220	0.402	7/16	SB209-26		
209-27	-	1-11/16											SB209-27		
209-28	-	1-3/4											SB209-28		

Type	Code	Afmetingen (mm / in.)										Bout mm/in.	Lagertype	Huis	Gewicht (kg)
		d	h	a	e	b	s	g	w	B1	n				
SAPP 201	-	12	22,2	86	68	25	9,5	3,2	43,8	28,6	6,5	M8	SA201	PP203	0,17
201-8	-	1/2	7/8	3-3/8	2-43/64	63/64	3/8	0.126	1-23/32	1.1260	0.2559	15/16	SA201-8		
SAPP 202	-	15	22,2	86	68	25	9,5	3,2	43,8	28,6	6,5	M8	SA202	PP203	0,17
202-9	-	9/16	7/8	3-3/8	2-43/64	63/64	3/8	0.126	1-23/32	1.1260	0.2559	15/16	SA202-9		
202-10	-	5/8											SA202-10		
SAPP 203	-	17	22,2	86	68	25	9,5	3,2	43,8	28,6	6,5	M8	SA203	PP203	0,17
203-11	-	11/16	7/8	3-3/8	2-43/64	63/64	3/8	0.126	1-23/32	1.1260	0.2559	15/16	SA203-11		
SAPP 204	-	20	25,4	98	76	32	9,5	3,2	50,5	31	7,5	M8	SA204	PP204	0,25
204-12	-	3/4	1	3-27/32	2-63/64	1-1/4	3/8	0.126	1-63/64	1.2204	0.2953	5/16	SA204-12		
SAPP 205	-	25	28,6	108	86	32	11,5	4,0	56,6	31	7,5	M10	SA205	PP205	0,32
205-13	-	13/16											SA205-13		
205-14	-	7/8	1-1/8	4-1/4	3-25/64	1-1/4	29/64	0.157	2-15/64	1.2204	0.2953	3/8	SA205-14		
205-15	-	15/16											SA205-15		
205-16	-	1											SA205-16		
SAPP 206	-	30	33,3	117	95	38	11,5	4,0	66,3	35,7	9	M10	SA206	PP206	0,47
206-17	-	1-1/16											SA206-17		
206-18	-	1-1/8	1-5/16	4-39/64	3-47/64	1-1/2	29/64	0.157	2-39/64	1.4055	0.3543	3/8	SA206-18		
206-19	-	1-3/16											SA206-19		
206-20	-	1-1/4											SA206-20		
SAPP 207	-	35	39,7	129	106	42	11,5	4,6	78,0	38,9	9,5	M10	SA207	PP207	0,76
207-20	-	1-1/4											SA207-20		
207-21	-	1-5/16	1-9/16	5-5/64	4-5/32	1-21/32	29/64	0.181	3-1/8	1.5315	0.3740	3/8	SA207-21		
207-22	-	1-3/8											SA207-22		
207-23	-	1-7/16											SA207-23		
SAPP 208	-	40	43,7	148	120	43	13,0	5,0	86,2	43,7	11	M12	SA208	PP208	0,92
208-24	-	1-1/2	1-23/32	5-53/64	4-47/64	1-11/16	33/64	0.197	3-25/64	1.7205	0.433	7/16	SA208-24		
208-25	-	1-9/16											SA208-25		
SAPP 209	-	45	46,8	156	128	45	13,0	6,0	92,3	43,7	11	M12	SA209	PP209	1,09
209-26	-	1-5/8	1-27/32	6-9/64	5-3/64	1-25/32	33/64	0.236	3-41/64	1.7205	0.433	7/16	SA209-26		
209-27	-	1-11/16											SA209-27		
209-28	-	1-3/4											SA209-28		