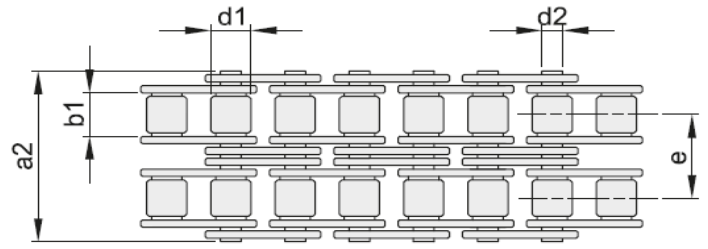
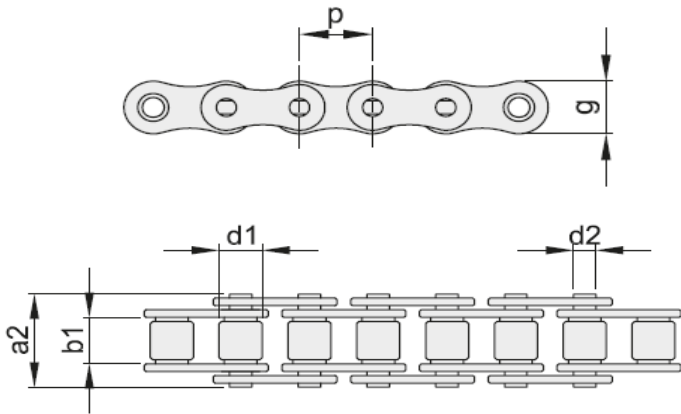


SRC ROLLENKETTING RVS

SRC ROLLER CHAINS STAINLESS STEEL

In simplex en duplex - DIN 8187



Simplex

Type	Code	mm	inch	Afmetingen [mm]				Breukbelasting / kracht		kg/m
				Steek / p	b1 min	d2	d1 max	a2 max	g max	
06B-1 SS	40106100	9,525	3/8"	5,72	3,28	6,35	13,5	8,26	6,6	0,40
08B-1 SS	40108100	12,70	1/2"	7,75	4,45	8,51	17,0	11,81	12,0	0,68
10B-1 SS	40110100	15,875	5/8"	9,65	5,08	10,16	19,6	14,73	15,0	0,91
12B-1 SS	40112100	19,05	3/4"	11,68	5,72	12,07	22,7	16,13	17,0	1,12
16B-1 SS	40116100	25,40	1"	17,02	8,28	15,88	36,1	21,08	40,0	2,59

Duplex

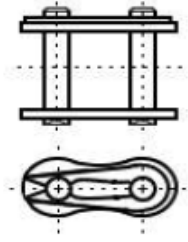
Type	Code	mm	inch	Afmetingen [mm]						Breukbelasting / kracht		kg/m
				Steek / p	b1 min	d2	d1 max	a2 max	g max	e	Fb N min	
06B-2 SS	40106200	9,525	3/8"	5,72	3,28	6,35	23,8	8,26	10,24	10,5	0,76	
08B-2 SS	40108200	12,70	1/2"	7,75	4,45	8,51	31,0	11,81	13,92	22,0	1,31	
10B-2 SS	40110200	15,875	5/8"	9,65	5,08	10,16	36,2	14,73	16,59	28,4	1,79	
12B-2 SS	40112200	19,05	3/4"	11,68	5,72	12,07	42,2	16,13	19,46	33,3	2,22	
16B-2 SS	40116200	25,40	1"	17,02	8,28	15,88	68,0	21,08	31,88	74,4	5,03	

SRC ROLLENKETTING RVS

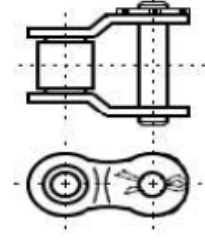
SRC ROLLER CHAINS STAINLESS STEEL

In simplex en duplex - DIN 8187

Sluitschakel met veerklip



Verloopschakel met splitpen



Type	Code			Code		
	Simplex	Duplex	Triplex	Simplex	Duplex	Triplex
06B SS	41106100	41106200		42106100	42106200	
08B SS	41108100	41108200		42108100	42108200	
10B SS	41110100	41110200		42110100	42110200	
12B SS	41112100	41112200		42112100	42112200	
16B SS	41116100	41116200		42116100	42116200	

