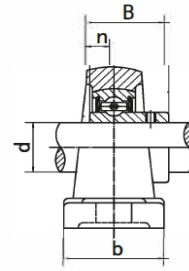
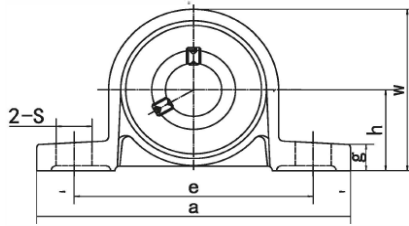


RVS MINIATUUR STAANDE LAGERBLOKKEN STAINLESS STEEL MINIATURE PILLOW BLOCK UNITS

RVS lagerblokken / RVS inserts / SS-KP000 - SS-KP006 & SS-UP000 - SS-UP006

SS-KP

Stelbout



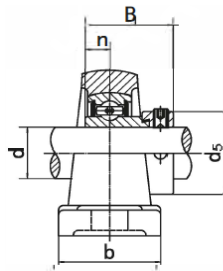
SS-KP000



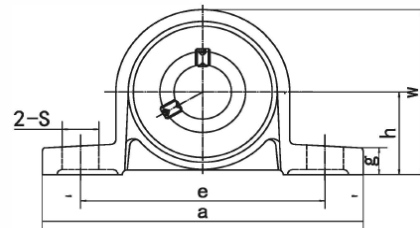
Type	Code		Afmetingen (mm / in.)										Bout	Lagertype	Huis	Gewicht (kg)
	FK	Eco	d	h	a	e	b	s	g	w	B	n				
SS-KP000	234000000	254000000	10 23/32	18 2-41/64	67 2-31/64	53,0 2-3/32	16,0 5/8	7,0 9/32	6,0 15/64	35,0 1-3/8	14,0	4,0 0,157	M6	SS-K000	SS-P000	0,07
SS-KP001	234001000	254001000	12 3/4	19 2-51/64	71 2-13/64	56,0 5/8	16,0 9/32	7,0 15/64	6,0 1-1/2	38,0 1-1/2	14,5 0,571	4,0 0,157	M6	SS-K001	SS-P001	0,09
SS-KP002	234002000	254002000	15 7/8	22 3-5/32	80 2-31/64	63,0 5/8	16,0 9/32	7,0 9/32	7,0 1-11/16	43,0 1-11/16	16,5	4,5 0,177	M6	SS-K002	SS-P002	0,13
SS-KP003	234003000	254003000	17 15/16	24 3-11/32	85 2-41/64	67,0 23/32	18,0 9/32	7,0 9/32	7,0 1-27/37	47,0 0,689	17,5	5,0 0,197	M6	SS-K003	SS-P003	0,16
SS-KP004	234004000	254004000	20 1-3/32	28 3-15/16	100 3-5/32	80,0 25/32	20,0 23/64	9,0 23/64	9,0 2-11/64	55,0 2-11/64	21,0	6,0 0,236	M8	SS-K004	SS-P004	0,23
SS-KP005	234005000	254005000	25 1-17/64	32 4-13/32	112 3-35/64	90,0 25/32	20,0 25/64	10,0 25/64	10,0 2-7/16	62,0 0,886	22,5	6,5 0,256	M8	SS-K005	SS-P005	0,29
SS-KP006	234006000	254006000	30 5-13/64	36 5-13/64	132 4-11/64	106,0 1-1/32	26,0 33/64	13,0 7/16	11,0 2-3/4	70,0 2-3/4	24,5	6,5 0,256	M10	SS-K006	SS-P006	0,45

SS-UP

Excentrische klemring



SS-UP000



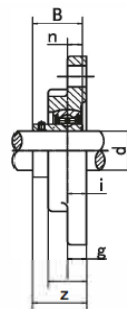
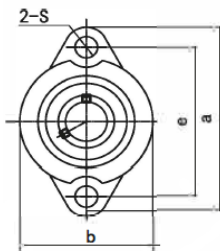
Type	Code		Afmetingen (mm / in.)										Bout	Lagertype	Huis	Gewicht (kg)	
	Eco		d	h	a	e	b	S	g	w	B ₁	n					d ₅
SS-UP000	256000000		10 23/32	18 2-41/64	67 2-31/64	53,0 2-3/32	16,0 5/8	7,0 9/32	6,0 15/64	35,0 1-3/8	17,5	4,0 0,157	17,0 43/64	M6	SS-U000	SS-P000	0,08
SS-UP001	256001000		12 3/4	19 2-51/64	71 2-13/64	56,0 5/8	16,0 9/32	7,0 15/64	6,0 1-1/2	38,0 1-1/2	17,5 0,689	4,0 0,157	19,0 3/4	M6	SS-U001	SS-P001	0,09
SS-UP002	256002000		15 7/8	22 3-5/32	80 2-31/64	63,0 5/8	16,0 9/32	7,0 9/32	7,0 1-11/16	43,0 1-11/16	18,5	4,5 0,177	22,0 65/64	M6	SS-U002	SS-P002	0,13
SS-UP003	256003000		17 15/16	24 3-11/32	85 2-41/64	67,0 23/32	18,0 9/32	7,0 9/32	7,0 1-27/37	47,0 0,807	20,5	5,0 0,197	25,0 31/32	M6	SS-U003	SS-P003	0,16
SS-UP004	256004000		20 1-3/32	28 3-15/16	100 3-5/32	80,0 25/32	20,0 23/64	9,0 23/64	9,0 2-11/64	55,0 2-11/64	24,5	6,0 0,236	30,0 1-3/16	M8	SS-U004	SS-P004	0,23
SS-UP005	256005000		25 1-17/64	32 4-13/32	112 3-35/64	90,0 25/32	20,0 25/64	10,0 25/64	10,0 2-7/16	62,0 1	25,5	6,5 0,2559	36,0 1-27/64	M8	SS-U005	SS-P005	0,29
SS-UP006	256006000		30 5-13/64	36 5-13/64	132 4-11/64	106,0 1-1/32	26,0 33/64	13,0 7/16	11,0 2-3/4	70,0 2-3/4	26,5	6,5 0,256	42,0 1-21/32	M10	SS-U006	SS-P006	0,45

RVS MINIATUUR FLENSLAGERBLOKKEN STAINLESS STEEL MINIATURE FLANGE UNITS

RVS lagerblokken / RVS inserts / SS-KFL000 - KFL006 & UFL000 - UFL007

SS-KFL

Stelbout



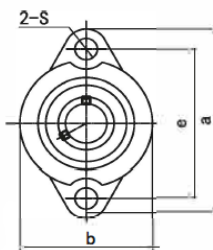
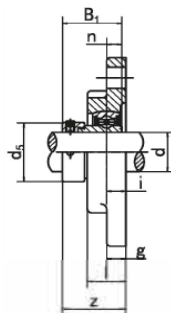
SS-KFL000



Type	Code		Afmetingen (mm / in.)											Bout	Lagertype	Huis	Gewicht (kg)
	FK	Eco	d	a	e	i	g	l	S	b	Z	B	n				
SS-KFL000	234000004	254000004	10	60 2-23/64	45 1-25/35	5,5 7/32	5,5 7/32	11,5 29/64	7,0 9/32	36,0 1-27/64	15,5	14,0 0,551	4,0 0,157	M6	SS-K000	SS-FL000	0,06
SS-KFL001	234001004	254001004	12	63 2-31/64	48 1-57/64	5,5 7/32	5,5 7/32	11,5 29/64	7,0 9/32	38,0 1-1/2	16,0 5/8	14,5 0,571	4,0 0,157	M6	SS-K001	SS-FL001	0,07
SS-KFL002	234002004	254002004	15	67 2-41/64	53 2-3/32	6,5 1/4	6,5 1/4	13,0 33/64	7,0 9/32	42,0 1-21/32	18,6	16,5 0,650	4,5 0,177	M6	SS-K002	SS-FL002	0,10
SS-KFL003	234003004	254003004	17	71 2-51/64	56 2-13/64	7,0 9/32	7,0 9/32	14,0 35/64	7,0 9/32	46,0 1-13/16	19,5 49/64	17,5 0,689	5,0 0,197	M6	SS-K003	SS-FL003	0,13
SS-KFL004	234004004	254004004	20	90 3-35/64	71 2-51/64	8,0 5/16	8,0 5/16	16,0 5/8	10,0 25/64	55,0 2-11/64	23,0	21,0 0,827	6,0 0,236	M8	SS-K004	SS-FL004	0,20
SS-KFL005	234005004	254005004	25	95 3-47/64	75 2-61/64	8,0 5/16	8,0 5/16	16,0 5/8	10,0 25/64	60,0 2-3/8	24,5 31/32	22,5 0,886	6,5 0,256	M8	SS-K005	SS-FL005	0,25
SS-KFL006	234006004	254006004	30	112 4-13/32	85 3-11/32	9,0 23/64	9,0 23/64	18,0 23/32	13,0 33/64	70,0 2-3/4	27,0	24,5 0,965	6,5 0,256	M10	SS-K006	SS-FL006	0,35

SS-UFL

Excentrische klemring



SS-UFL000



Type	Code		Afmetingen (mm / in.)											Bout	Lagertype	Huis	Gewicht (kg)	
	Eco		d	a	e	i	g	l	S	b	Z	B1	n					d5
SS-UFL000	256000004		10	60 2-23/64	45 1-25/35	5,5 7/32	5,5 7/32	11,5 29/64	7,0 9/32	36,0 1-27/64	15,5	17,5 0,689	4,0 0,157	17 43/64	M6	SS-U000	SS-FL000	0,06
SS-UFL001	256001004		12	63 2-31/64	48 1-57/64	5,5 7/32	5,5 7/32	11,5 29/64	7,0 9/32	38,0 1-1/2	16,0 5/8	17,5 0,689	4,0 0,157	19 3/4	M6	SS-U001	SS-FL001	0,07
SS-UFL002	256002004		15	67 2-41/64	53 2-3/32	6,5 1/4	6,5 1/4	13,0 33/64	7,0 9/32	42,0 1-21/32	18,6	18,5 0,728	4,5 0,177	22 55/64	M6	SS-U002	SS-FL002	0,10
SS-UFL003	256003004		17	71 2-51/64	56 2-13/64	7,0 9/32	7,0 9/32	14,0 35/64	7,0 9/32	46,0 1-13/16	19,5 49/64	20,5 0,807	5,0 0,197	25 31/32	M6	SS-U003	SS-FL003	0,13
SS-UFL004	256004004		20	90 3-35/64	71 2-51/64	8,0 5/16	8,0 5/16	16,0 5/8	10,0 25/64	55,0 2-11/64	23,0	24,5 0,965	6,0 0,236	30 1-3/16	M8	SS-U004	SS-FL004	0,20
SS-UFL005	256005004		25	95 3-47/64	75 2-61/64	8,0 5/16	8,0 5/16	16,0 5/8	10,0 25/64	60,0 2-3/8	24,5 31/32	25,5 1	6,5 0,256	36 1-27/64	M8	SS-U005	SS-FL005	0,25
SS-UFL006	256006004		30	112 4-13/32	85 3-11/32	9,0 23/64	9,0 23/64	18,0 23/32	13,0 33/64	70,0 2-3/4	27,0	26,5 1,04	6,5 0,256	42 1-21/32	M10	SS-U006	SS-FL006	0,35
SS-UFL007	256007004		35	122 4-51/64	95 3-3/4	10,0 0,391	10,0 0,391	20,0 25/32	13,0 33/64	80,0 3-5/32	32,5 1-9/32	29,5 1,161	7,0 0,276	48 1-57/64	M10	SS-U007	SS-FL007	0,50