

KUNSTSTOF SPANLAGERBLOKKEN

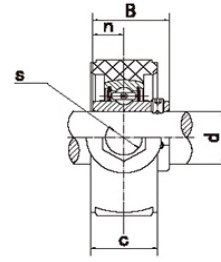
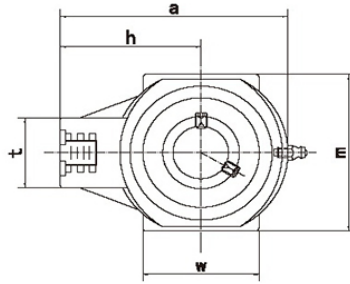
THERMOPLASTISC TAKE UP UNITS

Kunststof lagerhuizen & RVS lagers / SS-UCHEPL204 - SS-UCHEPL212 & SS-UCHAPL204 - SS-UCHAPL212

SS-UCHEPL

Wordt niet als compleet lagerblok geleverd
Huisen en lagers apart verkrijgbaar

- * 224... FK kunststof zwart
- * 225... FK kunststof wit
- * 223... GYC Kunststof zwart
- * 226... GYC kunststof wit
- * 221... GYC kunststof groen

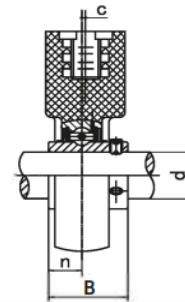
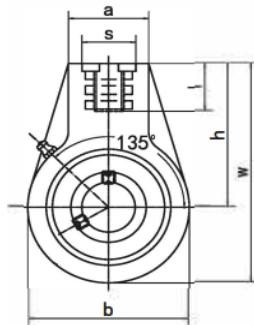


Type	Afmetingen (mm / in.)											Lagertype	Code lager	Huis	Code huis*	Gewicht (kg)
	d	a	c	h	m	t	s	w	B	n						
SS-UCHEPL204	20 3/4	99,0 3-57/64	27,5 1-5/64	63,5 2-1/2	65,0 2-9/16	36,0 1-27/64	M16	47,0 1-27/32	31,0 1,2205	12,7 0,500	SS-UC204	242204006	HPL204	224204013	0,35	
SS-UCHEPL205	25 13/16 ; 7/8 ; 15/16 ; 1	99,0 3-57/64	27,5 1-5/64	63,5 2-1/2	74,0 2-29/32	36,0 1-27/64	M16	47,0 1-27/32	34,1 1,3425	14,3 0,563	SS-UC205	242205006	HPL205	224205013	0,40	
SS-UCHEPL206	30 1-1/16 ; 1-1/8 ; 1-3/16 ; 1-1/4	125,0 4-59/64	34,5 1-23/64	76,0 2-63/64	90,0 3-35/64	40,0 1-37/64	M16	63,0 2-31/64	38,1 1,5	15,9 0,626	SS-UC206	242206006	HPL206	224206013	0,55	
SS-UCHEPL207	35 1-1/4 ; 1-5/16 ; 1-3/8 ; 1-7/16	125,0 4-59/64	34,5 1-23/64	76,0 2-63/64	90,0 3-35/64	40,0 1-37/64	M16	63,0 2-31/64	42,9 1,689	17,5 0,689	SS-UC207	242207006	HPL207	224207013	0,80	
SS-UCHEPL208	40 1-1/2 ; 1-9/16	140,0 5-33/64	34,5 1-23/64	85,0 3-11/32	100,0 3-15/16	40,0 1-37/64	M16	80,0 3-5/32	49,2 1,937	19,0 0,748	SS-UC208	242208006	HPL208	224208013	0,90	
SS-UCHEPL209	45 1-5/8 ; 1-11/16 ; 1-3/4	149,0 5-55/64	40,0 1-37/64	90,0 3-35/64	110,0 4-21/64	50,0 1-31/32	M20	85,0 3-11/32	49,2 1,937	19,0 0,748	SS-UC209	242209006	HPL209	224209013	1,10	
SS-UCHEPL210	50 1-13/16 ; 1-7/8 ; 1-15/16 ; 2	149,0 5-55/64	40,0 1-37/64	90,0 3-35/64	110,0 4-21/64	50,0 1-31/32	M20	85,0 3-11/32	51,6 2,0315	19,0 0,748	SS-UC210	242210006	HPL210	224210013	1,20	
SS-UCHEPL211	55 2 ; 2-1/16 ; 2-1/8 ; 2-3/16	171,0 6-47/64	38,0 1-1/2	106,0 4-11/64	140,0 5-33/64	64,0 2-33/64	M20	95,0 3-47/64	55,6 2,189	22,2 0,874	SS-UC211	242211006	HPL211	224211013	1,40	
SS-UCHEPL212	60 2-1/4 ; 2-5/16 ; 2-3/8 ; 2-7/16	194,0 7-41/64	42,0 1-21/32	119,0 4-11/16	140,0 5-33/64	64,0 2-33/64	M20	102,0 4-1/64	65,1 2,563	25,4 1,000	SS-UC212	242212006	HPL212	224212013	1,52	

SS-UCHAPL

Wordt niet als compleet lagerblok geleverd
Huisen en lagers apart verkrijgbaar

- * 224... FK kunststof zwart
- * 226... FK kunststof wit
- * 222... GYC Kunststof zwart
- * 225... GYC kunststof wit
- * 221... GYC kunststof groen



Type	Afmetingen (mm / in.)											Lagertype	Code lager	Huis	Code huis*	Gewicht (kg)
	d	h	w	b	c	a	s	l	B	n						
SS-UCHAPL204	20 3/4	64,0 2-33/64	96,0 3-25/32	64,0 2-23/64	0,0	40,0 1-37/64	M16	19,0 3/4	31,0 1,2205	12,7 0,500	SS-UC204	242204006	HAPL204	224204012	0,48	
SS-UCHAPL205	25 13/16 ; 7/8 ; 15/16 ; 1	64,0 2-33/64	103,0 4-1/16	78,0 3-5/64	0,0	40,0 1-37/64	M20	19,0 3/4	34,1 1,3425	14,3 0,563	SS-UC205	242205006	HAPL205	224205012	0,57	
SS-UCHAPL206	30 1-1/16 ; 1-1/8 ; 1-3/16 ; 1-1/4	64,0 2-33/64	103,0 4-1/16	78,0 3-5/64	0,0	40,0 1-37/64	M20	19,0 3/4	38,1 1,5	15,9 0,626	SS-UC206	242206006	HAPL206	224206012	0,80	
SS-UCHAPL207	35 1-1/4 ; 1-5/16 ; 1-3/8 ; 1-7/16	70,0 2-3/4	116,0 4-9/16	92,0 3-5/8	0,0	40,0 1-37/64	M20	19,0 3/4	42,9 1,689	17,5 0,689	SS-UC207	242207006	HAPL207	224207012	1,10	
SS-UCHAPL208	40 1-1/2 ; 1-9/16	73,0 2-7/8	121,0 4-49/64	96,0 3-25/32	2,0 5/64	40,0 1-37/64	M20	19,0 3/4	49,2 1,937	19,0 0,748	SS-UC208	242208006	HAPL208	224208012	1,35	
SS-UCHAPL209	45 1-5/8 ; 1-11/16 ; 1-3/4	82,0 3-15/64	136,0 5-23/64	108,0 4-1/4	5,0 13/64	48,0 1-57/64	M20	21,0 53/64	49,2 1,937	19,0 0,748	SS-UC209	242209006	HAPL209	224209012	1,46	
SS-UCHAPL210	50 1-13/16 ; 1-7/8 ; 1-15/16 ; 2	83,0 3-17/64	142,0 5-19/32	118,0 4-41/64	5,0 13/64	48,0 1-57/64	M24	21,0 53/64	51,6 2,0315	19,0 0,748	SS-UC210	242210006	HAPL210	224210012	1,67	
SS-UCHAPL211	55 2 ; 2-1/16 ; 2-1/8 ; 2-3/16	87,0 3-27/64	150,0 5-29/32	126,0 4-61/64	7,0 9/32	60,0 2-23/64	M30	25,0 63/64	55,6 2,189	22,2 0,874	SS-UC211	242211006	HAPL211	224211012	2,07	
SS-UCHAPL212	60 2-1/4 ; 2-5/16 ; 2-3/8 ; 2-7/16	102,0 4-1/64	173,0 6-13/16	142,0 5-19/32	9,0 23/64	60,0 2-23/64	M30	28,0 1-7/64	65,1 2,563	25,4 1,000	SS-UC212	242212006	HAPL212	224212012	2,63	

KUNSTSTOF SPANLAGERBLOKKEN

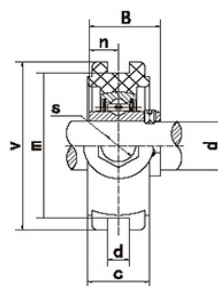
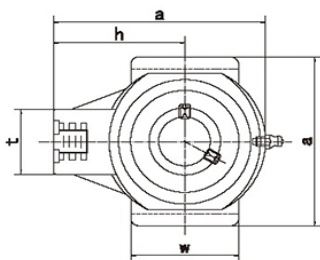
THERMOPLASTISC TAKE UP UNITS

Kunststof lagerhuizen & RVS lagers / SS-UCTPL204 - SS-UCTPL212

SS-UCTPL

Wordt niet als compleet lagerblok geleverd
Huis en lagers apart verkrijgbaar

- * 224... FK kunststof zwart
- * 225... FK kunststof wit
- * 223... GYC Kunststof zwart
- * 226... GYC kunststof wit
- * 221... GYC kunststof groen



Type	Afmetingen (mm / in.)													Lagertype	Code lager	Huis	Code huis*	Gewicht (kg)
	d	a	c	d	h	m	s	t	v	w	B	n						
SS-UCTPL204	3/4	20	99,0	27,5	12,0	64,0	76,0	M16	36,0	88,0	47,0	31,0	12,7	SS-UC204	242204006	TPL204	224204011	0,35
SS-UCTPL205	13/16 ; 7/8 ; 15/16 ; 1	25	99,0	27,5	12,0	64,0	76,0	M16	36,0	88,0	47,0	34,1	14,3	SS-UC205	242205006	TPL205	224205011	0,40
SS-UCTPL206	1-1/16 ; 1-1/8 ; 1-3/16 ; 1-1/4	30	125,0	34,5	12,0	76,0	89,0	M16	40,0	102,0	63,0	38,1	15,9	SS-UC206	242206006	TPL206	224206011	0,55
SS-UCTPL207	1-1/4 ; 1-5/16 ; 1-3/8 ; 1-7/16	35	125,0	34,5	12,0	76,0	89,0	M16	40,0	102,0	63,0	42,9	17,5	SS-UC207	242207006	TPL207	224207011	0,80
SS-UCTPL208	1-1/2 ; 1-9/16	40	140,0	34,5	16,0	85,0	102,0	M16	40,0	114,0	80,0	49,2	19,0	SS-UC208	242208006	TPL208	224208011	0,95
SS-UCTPL209	1-5/8 ; 1-11/16 ; 1-3/4	45	149,0	40,0	16,0	90,0	102,0	M20	50,0	117,0	85,0	49,2	19,0	SS-UC209	242209006	TPL209	224209011	1,10
SS-UCTPL210	1-13/16 ; 1-7/8 ; 1-15/16 ; 2	50	149,0	40,0	16,0	90,0	102,0	M20	50,0	117,0	85,0	51,6	19,0	SS-UC210	242210006	TPL210	224210011	1,25
SS-UCTPL211	2 ; 2-1/16 ; 2-1/8 ; 2-3/16	55	171,0	38,0	22,0	106,0	130,0	M20	64,0	146,0	95,0	55,6	22,2	SS-UC211	242211006	TPL211	224211011	1,62
SS-UCTPL212	2-1/4 ; 2-5/16 ; 2-3/8 ; 2-7/16	60	194,0	42,0	22,0	119,0	130,0	M20	64,0	146,0	102,0	65,1	25,4	SS-UC212	242212006	TPL212	224212011	1,78