

# SPANLAGERBLOKKEN PTI

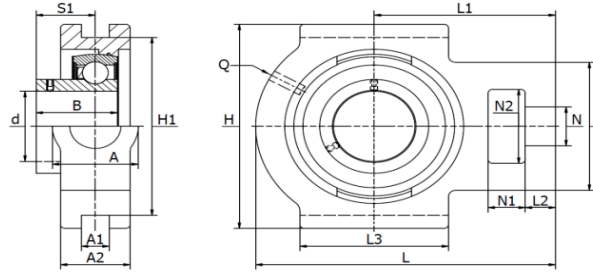
## TAKE UP UNITS PTI

Gegoten lagerblokken / SKL 20 S - SKL 60 S



### SKL S PTUEY

Stelbout in binnenring



Materiaal: gietijzeren behuizing, radiale insert kogellager

Type	Code	Afmetingen (mm)																	Lagertype	Gewicht (kg)
		d	L	H	A	A <sub>1</sub>	A <sub>2</sub>	B	H <sub>1</sub>	L <sub>1</sub>	L <sub>2</sub>	L <sub>3</sub>	N	N <sub>1</sub>	N <sub>2</sub>	Q	S <sub>1</sub>	T		
SKL 20 S	310079204	20	94,5	90	37	12	25	25,0	76	60	9	50	19	18	32,0	1/8"	18,0	51	SB 204	0,84
SKL 25 S	310079205	25	98,5	90	37	12	25	27,0	76	62	10	50	19	18	32,0	1/8"	19,5	51	SB 205	0,86
SKL 30 S	310079206	30	114,5	102	37	12	25	30,0	89	70	10	57	22	18	36,5	1/8"	21,0	56	SB 206	1,19
SKL 35 S	310079207	35	131,5	102	40	12	30	35,0	89	80	13	63	22	18	36,5	1/8"	25,5	64	SB 207	1,74
SKL 40 S	310079208	40	141,0	115	50	16	35	39,5	102	88	16	82	29	20	49,0	1/8"	29,0	82	SB 208	2,43
SKL 45 S	310079209	45	141,0	115	50	16	35	41,5	102	88	16	82	29	20	49,0	1/8"	30,5	82	SB 210	2,45
SKL 50 S	310079210	50	148,0	115	50	16	35	43,0	102	90	16	85	29	20	49,0	1/8"	32,0	83	SB 212	4,22
SKL 55 S	310079211	55	169,0	145	60	22	42	43,5	130	104	17	95	35	26	63,5	1/8"	33,5	102	SB 213	7,00
SKL 60 S	310079212	60	186,0	146	60	22	44	47,0	130	118	19	100	35	32	63,5	1/8"	34,0	102	SB 214	6,70