

# SPANLAGERBLOKKEN PTI

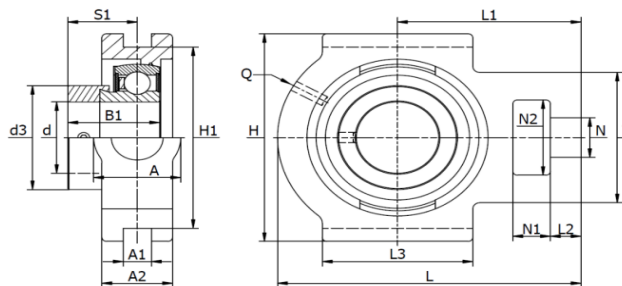
## TAKE UP UNITS PTI

Gegoten lagerblokken / SKL 20 - SKL 60



### SKL PTUE

Excentrische klemring



Materiaal: gietijzeren behuizing, radiale insert kogellager

Type	Code	Afmetingen (mm)																			Lagertype	Gewicht (kg)
		d	L	H	A	A <sub>1</sub>	A <sub>2</sub>	B <sub>1</sub>	d <sub>3 max</sub>	H <sub>1</sub>	L <sub>1</sub>	L <sub>2</sub>	L <sub>3</sub>	N	N <sub>1</sub>	N <sub>2</sub>	Q	S <sub>1</sub>	T			
SKL 20	310075204	20	94,5	90	37	12	25	31,0	33,0	76	60	9	50	19	18	32,0	1/8"	23,5	51	SA 204	0,83	
SKL 25	310075205	25	98,5	90	37	12	25	31,0	37,5	76	62	10	50	19	18	32,0	1/8"	23,5	51	SA 205	0,85	
SKL 30	310075206	30	114,5	102	37	12	25	35,8	44,0	89	70	10	57	22	18	36,5	1/8"	26,7	56	SA 206	1,19	
SKL 35	310075207	35	131,5	102	40	12	30	39,0	51,0	89	80	13	63	22	18	36,5	1/8"	29,4	64	SA 207	1,65	
SKL 40	310075208	40	141,0	115	50	16	35	43,8	58,0	102	88	16	82	29	20	49,0	1/8"	32,8	82	SA 208	2,43	
SKL 45	310075209	45	141,0	115	50	16	35	43,8	63,0	102	88	16	82	29	20	49,0	1/8"	32,8	82	SA 209	2,32	
SKL 50	310075210	50	148,0	115	50	16	35	43,8	69,0	102	90	16	85	29	20	49,0	1/8"	32,7	83	SA 210	2,42	
SKL 55	310075211	55	169,0	145	60	22	42	48,4	76,0	130	104	17	95	35	26	63,5	1/8"	36,4	102	SA 211	3,99	
SKL 60	310075212	60	186,0	146	60	22	44	53,1	84,0	130	118	19	100	35	32	63,5	1/8"	39,6	102	SA 212	4,21	