

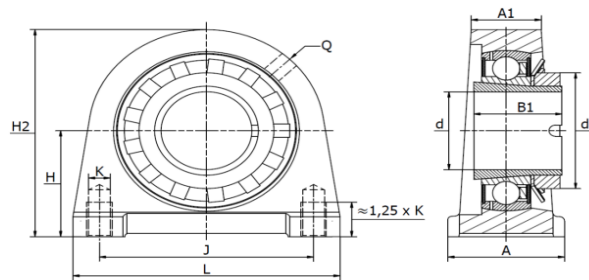
STAANDE LAGERBLOKKEN PTI

PILLOW BLOCK UNITS PTI

Gegoten lagerblokken / SWG 20 KG - SWG 50 KG

SWG KG RSHEA

Trekbus (inbegrepen)



Materiaal: gietijzeren behuizing, radiale insert kogellager



Type	Code	Afmetingen (mm)											Lagertype + trekbus	Gewicht (kg)
		d	L	H ₂	A	A ₁	B ₁	d _{3 max}	H	J	K	Q		
SWG 20 KG-RSHEA20	310015204	20	65	64	32	19	28	32	33,3	50,8	M8	M6	GSH 20 RRB	0,51
SWG 25 KG-RSHEA25	310015205	25	70	70	36	21	28	38	36,5	50,8	M10	Rp 1/8"	GSH 25 RRB	0,60
SWG 30 KG-RSHEA30	310015206	30	98	82	40	25	32	45	42,9	76,2	M10	Rp 1/8"	GSH 30 RRB	1,05
SWG 35 KG-RSHEA35	310015207	35	103	93	45	27	34	52	47,6	82,6	M10	Rp 1/8"	GSH 35 RRB	1,44
SWG 40 KG-RSHEA40	310015208	40	116	99	48	30	38	58	49,2	88,9	M12	Rp 1/8"	GSH 40 RRB	1,84
SWG 45 KG-RSHEA45	310015209	45	120	107	48	32	46	62	54,0	95,3	M12	Rp 1/8"	GSH 45 RRB	2,14
SWG 50 KG-RSHEA50	310015210	50	135	115	54	34	40	70	57,2	101,6	M16	Rp 1/8"	GSH 50 RRB	2,79