

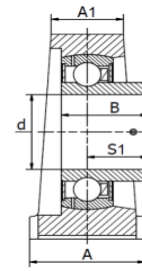
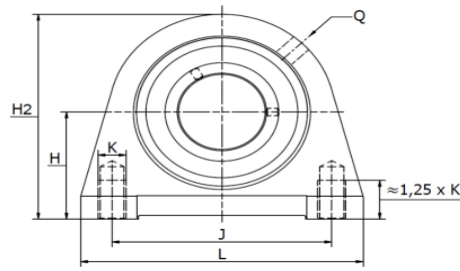
STAANDE LAGERBLOKKEN PTI

PILLOW BLOCK UNITS PTI

Gegoten lagerblokken / SWG 12 S - SWG 60 S

SWG S PSHEY

Stelbout in binnenring



Materiaal: gietijzeren behuizing, radiale insert kogellager

Type	Code	Afmetingen (mm)											Draagkracht (N)		Gewicht (kg)
		d	L	H ₂	A	A ₁	B	H	J	K	Q	S ₁	Dynamisch	Statisch	
SWG 12 S-PSHEY12	310014201	12	63	57	30	18	22	30,2	47,0	M8	M6	16,0	9800	4750	0,42
SWG 15 S-PSHEY15	310014202	15	63	57	30	18	22	30,2	47,0	M8	M6	16,0	9800	4750	0,41
SWG 17 S-PSHEY17	310014203	17	63	57	30	18	22	30,2	47,0	M8	M6	16,0	9800	4750	0,40
SWG 20 S-PSHEY20	310014204	20	65	64	32	19	25	33,3	50,8	M8	M6	18,0	12800	6600	0,42
SWG 25 S-PSHEY25	310014205	25	70	70	36	21	27	36,5	50,8	M10	1/8"	19,5	14000	7800	0,57
SWG 30 S-PSHEY30	310014206	30	98	82	40	25	30	42,9	76,2	M10	1/8"	21,0	19500	11300	0,88
SWG 35 S-PSHEY35	310014207	35	103	93	45	27	35	47,6	82,6	M10	1/8"	25,5	25500	15300	1,19
SWG 40 S-PSHEY40	310014208	40	116	99	48	30	40	49,2	88,9	M12	1/8"	29,0	32500	19800	1,73
SWG 45 S-PSHEY45	310014209	45	120	107	48	32	42	54,0	95,3	M12	1/8"	30,5	32500	20400	1,91
SWG 50 S-PSHEY50	310014210	50	135	115	54	34	43	57,2	101,6	M16	1/8"	32,0	35000	23200	2,64
SWG 60 S-PSHEY60	310014212	60	150	140	60	42	47	69,9	118,0	M16	1/8"	34,0	52000	36000	3,60