

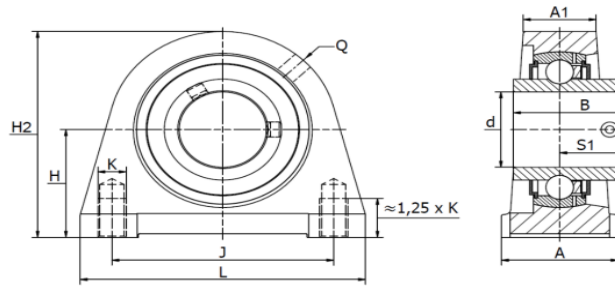
# STAANDE LAGERBLOKKEN PTI

## PILLOW BLOCK UNITS PTI

Gegoten lagerblokken / SWG 20 U - SWG 60 U

### SWG U RSHEY

Stelbout in binnenring



Materiaal: gietijzeren behuizing, radiale insert kogellager

Type	Code	Afmetingen (mm)											Lagertype	Gewicht (kg)
		d	L	H <sub>2</sub>	A	A <sub>1</sub>	B	H	J	K	Q	S <sub>1</sub>		
SWG 20 U-RSHEY20	310013204	20	65	64,0	32	19	31,0	33,3	50,8	M8	M6	18,3	UC 204	0,52
SWG 25 U-RSHEY25	310013205	25	70	70,0	36	21	34,1	36,5	50,8	M10	Rp 1/8"	19,6	UC 205	0,61
SWG 30 U-RSHEY30	310013206	30	98	82,0	40	25	38,1	42,9	76,2	M10	Rp 1/8"	22,2	UC 206	1,07
SWG 35 U-RSHEY35	310013207	35	103	93,0	45	27	42,9	47,6	82,6	M10	Rp 1/8"	25,4	UC 207	1,45
SWG 40 U-RSHEY40	310013208	40	116	99,0	48	30	49,2	49,2	88,9	M12	Rp 1/8"	30,2	UC 208	1,87
SWG 45 U-RSHEY45	310013209	45	120	107,0	48	32	49,2	54,0	95,3	M12	Rp 1/8"	30,5	UC 209	2,15
SWG 50 U-RSHEY50	310013210	50	135	115,0	54	34	51,6	57,2	101,6	M16	Rp 1/8"	32,6	UC 210	2,82
SWG 55 U-RSHEY55	310013211	55	150	124,5	60	35	55,6	63,5	118,0	M16	Rp 1/8"	33,4	UC 211	3,20
SWG 60 U-RSHEY60	310013212	60	150	140,0	60	42	65,1	69,9	118,0	M16	Rp 1/8"	39,7	UC 212	4,02