

# METRISCHE TANDRIEMEN "AT"

## METRIC BELTS "AT"

T2,5, T5, T10 - DIN 7721-1

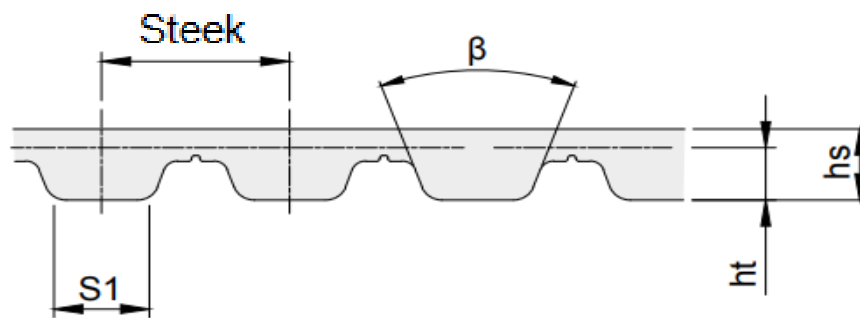
### Eigenschappen

- Temperatuurbereik van -30° C tot 80° C afhankelijk van functie
- Resistent tegen simpele olie, vet en brandstof
- Gelimiteerde resistentie tegen zuren en alkali
- Siliconenvrije materialen en productie
- Geschikt voor tropisch klimaat
- Resistent tegen veroudering
- Onderhoudsvrij
- Constance lengte
- Weinig geluidsoverlast
- Hoge flexibiliteit



### Properties

- Temperature range from -30 °C to 80 °C depending on application
- Resistant to simple oils, greases and fuel
- Limited resistance to acids and alkalies
- Silicone-free raw materials and production
- Suitable for tropical climates
- Resistant to aging
- Maintenance-free
- Constant length
- Low noise pollution
- High flexibility



### Maatvoering tandriem en tolerantie dikte

Type	Steek mm	hs mm	tol. mm	ht mm	S1 mm	β mm
AT 5	5	2,7	± 0,15	1,2	2,5	50°
AT 10	10	4,5	± 0,30	2,5	5,0	50°



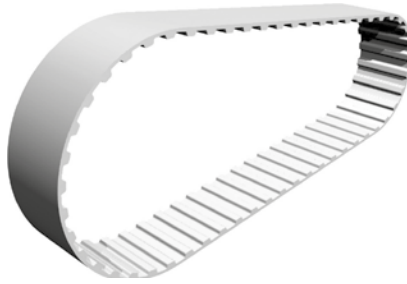
# METRISCHE TANDRIEMEN "AT"

## METRIC BELTS "AT"

AT10-16, AT10-25, AT10-32, AT10-50

### AT 10

STEEK 10 mm



Materiaal: polyurethaan

Type	Tanden	mm				
		Lengte	Code AT 10 Breedte 16 mm	Code AT 10 Breedte 25 mm	Code AT 10 Breedte 32 mm	Code AT 10 Breedte 50 mm
AT 10 440	44	440	7310160440	7310250440	7310320440	7310500440
AT 10 500	50	500	7310160500	7310250500	7310320500	7310500500
AT 10 560	56	560	7310160560	7310250560	7310320560	7310500560
AT 10 580	58	580	7310160580	7310250580	7310320580	7310500580
AT 10 600	60	600	7310160600	7310250600	7310320600	7310500600
AT 10 610	61	610	7310160610	7310250610	7310320610	7310500610
AT 10 660	66	660	7310160660	7310250660	7310320660	7310500660
AT 10 700	70	700	7310160700	7310250700	7310320700	7310500700
AT 10 730	73	730	7310160730	7310250730	7310320730	7310500730
AT 10 780	78	780	7310160780	7310250780	7310320780	7310500780
AT 10 800	80	800	7310160800	7310250800	7310320800	7310500800
AT 10 840	84	840	7310160840	7310250840	7310320840	7310500840
AT 10 880	88	880	7310160880	7310250880	7310320880	7310500880
AT 10 890	89	890	7310160890	7310250890	7310320890	7310500890
AT 10 920	92	920	7310160920	7310250920	7310320920	7310500920
AT 10 960	96	960	7310160960	7310250960	7310320960	7310500960
AT 10 980	98	980	7310160980	7310250980	7310320980	7310500980
AT 10 1000	100	1000	7310161000	7310251000	7310321000	7310501000
AT 10 1010	101	1010	7310161010	7310251010	7310321010	7310501010
AT 10 1050	105	1050	7310161050	7310251050	7310321050	7310501050
AT 10 1080	108	1080	7310161080	7310251080	7310321080	7310501080
AT 10 1100	110	1100	7310161100	7310251100	7310321100	7310501100
AT 10 1150	115	1150	7310161150	7310251150	7310321150	7310501150
AT 10 1210	121	1210	7310161210	7310251210	7310321210	7310501210
AT 10 1250	125	1250	7310161250	7310251250	7310321250	7310501250
AT 10 1280	128	1280	7310161280	7310251280	7310321280	7310501280
AT 10 1300	130	1300	7310161300	7310251300	7310321300	7310501300
AT 10 1320	132	1320	7310161320	7310251320	7310321320	7310501320
AT 10 1350	135	1350	7310161350	7310251350	7310321350	7310501350
AT 10 1360	136	1360	7310161360	7310251360	7310321360	7310501360
AT 10 1400	140	1400	7310161400	7310251400	7310321400	7310501400
AT 10 1420	142	1420		7310251420		7310501420
AT 10 1480	148	1480	7310161480	7310251480	7310321480	7310501480
AT 10 1500	150	1500	7310161500	7310251500	7310321500	7310501500
AT 10 1600	160	1600	7310161600	7310251600	7310321600	7310501600
AT 10 1700	170	1700	7310161700	7310251700	7310321700	7310501700
AT 10 1800	180	1800	7310161800	7310251800	7310321800	7310501800
AT 10 1940	194	1940	7310161940	7310251940	7310321940	7310501940