

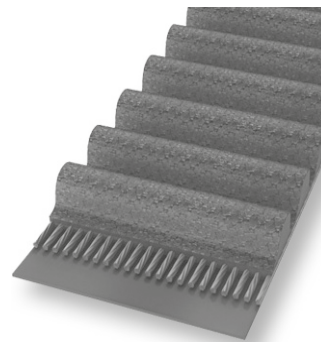
TANDRIEMEN "HTD"

"HTD" TIMING BELTS

3M, 5M, 8M, 14M

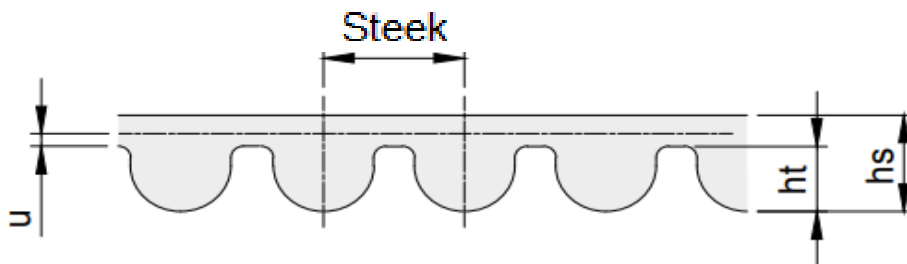
Eigenschappen

Temperatuurbereik van -20° C tot 100° C afhankelijk van functie
Resistent tegen olie
Ozon-resistent
Geschikt voor tropisch klimaat
Resistent tegen veroudering
Onderhoudsvrij



Properties

Temperature range from -20 °C to 100 °C depending on application
Conditionally resistant to oil
Ozone-resistant
Suitable for tropical climates
Resistant to aging
Maintenance-free



Maatvoering tandriem

Type	<i>mm</i> Steek	<i>mm</i> hs	<i>mm</i> ht	<i>mm</i> u
HTD 3M	3,00	2,40	1,20	0,380
HTD 5M	5,00	3,60	2,10	0,570
HTD 8M	8,00	5,60	3,40	0,686
HTD 14M	14,00	10,00	6,00	1,395

TANDRIEMEN "HTD"

"HTD" TIMING BELTS

3M06, 3M09, 3M15

HTD 3M
STEEK 3 mm



Materiaal: neopreen

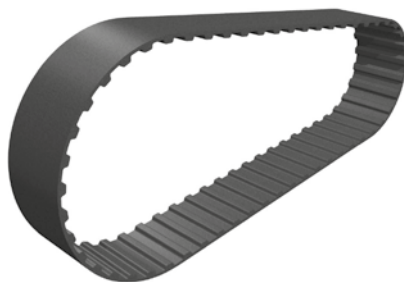
Type	Tanden	mm		Code HTD 3	
		Lengte	Breedte 6 mm	Breedte 9 mm	Breedte 15 mm
111 3M	37	111	7103060111	7103090111	7103150111
117 3M	39	117	7103060117	7103090117	7103150117
129 3M	43	129	7103060129	7103090129	7103150129
141 3M	47	141	7103060141	7103090141	7103150141
144 3M	48	144	7103060144	7103090144	7103150144
150 3M	50	150	7103060150	7103090150	7103150150
156 3M	52	156	7103060156	7103090156	7103150156
159 3M	53	159	7103060159	7103090159	7103150159
165 3M	55	165	7103060165	7103090165	7103150165
168 3M	56	168	7103060168	7103090168	7103150168
174 3M	58	174	7103060174	7103090174	7103150174
177 3M	59	177	7103060177	7103090177	7103150177
180 3M	60	180	7103060180	7103090180	7103150180
186 3M	62	186	7103060186	7103090186	7103150186
192 3M	64	192	7103060192	7103090192	7103150192
195 3M	65	195	7103060195	7103090195	7103150195
201 3M	67	201	7103060201	7103090201	7103150201
204 3M	68	204	7103060204	7103090204	7103150204
210 3M	70	210	7103060210	7103090210	7103150210
213 3M	71	213	7103060213	7103090213	7103150213
216 3M	72	216	7103060216	7103090216	7103150216
225 3M	75	225	7103060225	7103090225	7103150225
240 3M	80	240	7103060240	7103090240	7103150240
246 3M	82	246	7103060246	7103090246	7103150246
252 3M	84	252	7103060252	7103090252	7103150252
255 3M	85	255	7103060255	7103090255	7103150255
267 3M	89	267	7103060267	7103090267	7103150267
276 3M	92	276	7103060276	7103090276	7103150276
282 3M	94	282	7103060282	7103090282	7103150282
285 3M	95	285	7103060285	7103090285	7103150285
288 3M	96	288	7103060288	7103090288	7103150288
291 3M	97	291	7103060291	7103090291	7103150291
294 3M	98	294	7103060294	7103090294	7103150294
300 3M	100	300	7103060300	7103090300	7103150300
312 3M	104	312	7103060312	7103090312	7103150312
318 3M	106	318	7103060318	7103090318	7103150318
330 3M	110	330	7103060330	7103090330	7103150330
333 3M	111	333	7103060333	7103090333	7103150333
336 3M	112	336	7103060336	7103090336	7103150336
339 3M	113	339	7103060339	7103090339	7103150339
357 3M	119	357	7103060357	7103090356	7103150357
363 3M	121	363	7103060363	7103090363	7103150363
384 3M	128	384	7103060384	7103090384	7103150384
390 3M	130	390	7103060390	7103090390	7103150390
393 3M	131	393	7103060393	7103090393	7103150393
420 3M	140	420	7103060420	7103090420	7103150420
435 3M	145	435	7103060435	7103090435	7103150435
447 3M	149	447	7103060447	7103090447	7103150447

TANDRIEMEN "HTD"

"HTD" TIMING BELTS

3M06, 3M09, 3M15

HTD 3M
STEEK 3 mm



Materiaal: neopreen

Type	Tanden	mm		Code HTD 3	
		Lengte	Breedte 6 mm	Breedte 9 mm	Breedte 15 mm
462 3M	154	462	7103060462	7103090462	7103150462
474 3M	158	474	7103060474	7103090474	7103150474
477 3M	159	477	7103060477	7103090477	7103150477
480 3M	160	480	7103060480	7103090480	7103150480
486 3M	162	486	7103060486	7103090486	7103150486
489 3M	163	489	7103060489	7103090489	7103150489
495 3M	165	495	7103060495	7103090495	7103150495
501 3M	167	501	7103060501	7103090501	7103150501
513 3M	171	513	7103060513	7103090513	7103150513
522 3M	174	522	7103060522	7103090522	7103150522
525 3M	175	525	7103060525	7103090525	7103150525
537 3M	179	537	7103060537	7103090537	7103150537
564 3M	188	564	7103060564	7103090564	7103150564
570 3M	190	570	7103060570	7103090570	7103150570
597 3M	199	597	7103060597	7103090597	7103150597
600 3M	200	600	7103060600	7103090600	7103150600
606 3M	202	606	7103060606	7103090606	7103150606
612 3M	204	612	7103060612	7103090612	7103150612
633 3M	211	633	7103060633	7103090633	7103150633
669 3M	223	669	7103060669	7103090669	7103150669
708 3M	236	708	7103060708	7103090708	7103150708
711 3M	237	711	7103060711	7103090711	7103150711
738 3M	246	738	7103060738	7103090738	7103150738
753 3M	251	753	7103060753	7103090753	7103150753
804 3M	268	804	7103060804	7103090804	7103150804
822 3M	274	822	7103060822	7103090822	7103150822
843 3M	281	843	7103060843	7103090843	7103150843
882 3M	294	882	7103060882	7103090882	7103150882
945 3M	315	945	7103060945	7103090945	7103150945
960 3M	320	960	7103060960	7103090960	7103150960
1002 3M	334	1002	7103061002	7103091002	7103151002
1041 3M	347	1041	7103061041	7103091041	7103151041
1068 3M	356	1068	7103061068	7103091068	7103151068
1071 3M	357	1071	7103061071	7103091071	7103151071
1125 3M	375	1125	7103061125	7103091125	7103151125
1176 3M	392	1176	7103061176	7103091176	7103151176
1245 3M	415	1245	7103061245	7103091245	7103151245
1500 3M	500	1500	7103061500	7103091500	7103151500
1569 3M	523	1569	7103061569	7103091569	7103151569