

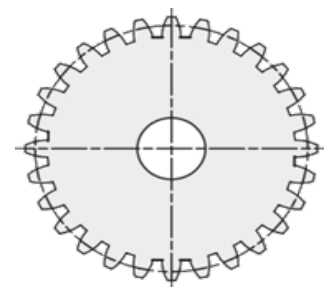
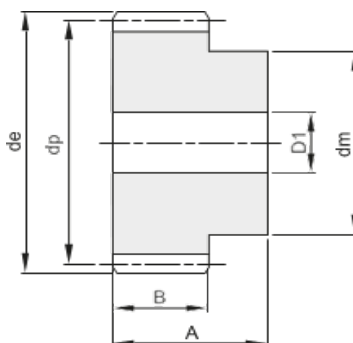
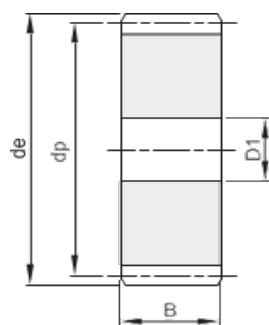
TANDWIELEN CYLINDRICAL GEARS

MOD 1 t/m MOD 8

Module 1

Drukhoek 20°

A	B
25	15



Materiaal: staal C45



Z	Code	de	dp	dm	D1
12	55010012	14	12	9	-
13	55010013	15	13	10	-
14	55010014	16	14	11	-
15	55010015	17	15	12	-
16	55010016	18	16	13	-
17	55010017	19	17	14	-
18	55010018	20	18	15	8
19	55010019	21	19	15	8
20	55010020	22	20	16	8
21	55010021	23	21	16	8
22	55010022	24	22	16	8
23	55010023	25	23	18	8
24	55010024	26	24	20	10
25	55010025	27	25	20	10
26	55010026	28	26	20	10
27	55010027	29	27	20	10
28	55010028	30	28	20	10
29	55010029	31	29	20	10
30	55010030	32	30	20	10
31	55010031	33	31	25	10
32	55010032	34	32	25	10
33	55010033	35	33	25	10
34	55010034	36	34	25	10
35	55010035	37	35	25	10
36	55010036	38	36	25	10
37	55010037	39	37	25	10
38	55010038	40	38	25	10
39	55010039	41	39	25	10
40	55010040	42	40	25	10
41	55010041	43	41	30	10
42	55010042	44	42	30	10
43	55010043	45	43	30	10
44	55010044	46	44	30	10
45	55010045	47	45	30	10
46	55010046	48	46	30	10
47	55010047	49	47	30	10

Z	Code	de	dp	dm	D1
48	55010048	50	48	30	10
49	55010049	51	49	30	10
50	55010050	52	50	30	12
51	55010051	53	51	40	12
52	55010052	54	52	40	12
53	55010053	55	53	40	12
54	55010054	56	54	40	12
55	55010055	57	55	40	12
56	55010056	58	56	40	12
57	55010057	59	57	40	12
58	55010058	60	58	40	12
59	55010059	61	59	40	12
60	55010060	62	60	40	12
61	55010061	63	61	50	12
62	55010062	64	62	50	12
63	55010063	65	63	50	12
64	55010064	66	64	50	12
65	55010065	67	65	50	12
66	55010066	68	66	50	12
67	55010067	69	67	50	12
68	55010068	70	68	50	12
69	55010069	71	69	50	12
70	55010070	72	70	50	12
72	55010072	74	72	-	12
75	55010075	77	75	-	12
76	55010076	78	76	-	12
80	55010080	82	80	-	12
85	55010085	87	85	-	12
90	55010090	92	90	-	12
95	55010095	97	95	-	12
100	55010100	102	100	-	12
110	55010110	112	110	-	12
114	55010114	116	114	-	12
120	55010120	122	120	-	12
127	55010127	129	127	-	12

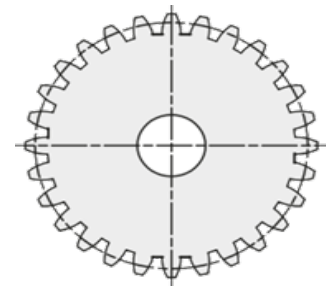
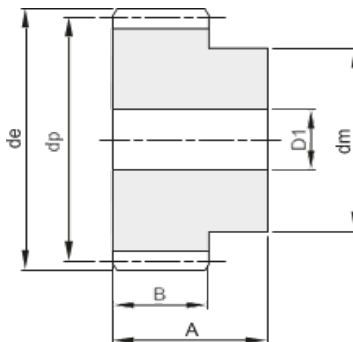
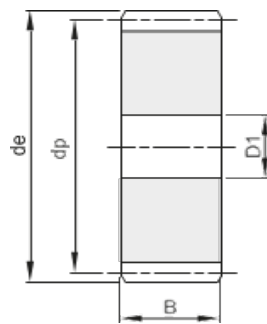
TANDWIELEN CYLINDRICAL GEARS

MOD 1 t/m MOD 8

Module 1,5

Drukhoek 20°

A	B
30	17



Materiaal: staal C45

Z	Code	d_e	d_p	d_m	D_1
12	55015012	21	18	14	8
13	55015013	23	20	15	8
14	55015014	24	21	17	8
15	55015015	26	23	18	8
16	55015016	27	24	19	8
17	55015017	29	26	20	8
18	55015018	30	27	20	8
19	55015019	32	29	20	8
20	55015020	33	30	25	8
21	55015021	35	32	25	10
22	55015022	36	33	25	10
23	55015023	38	35	25	10
24	55015024	39	36	25	10
25	55015025	41	38	25	10
26	55015026	42	39	30	12
27	55015027	44	41	30	12
28	55015028	45	42	30	12
29	55015029	47	44	30	12
30	55015030	48	45	30	12
31	55015031	50	47	35	12
32	55015032	51	48	35	12
33	55015033	53	50	35	12
34	55015034	54	51	35	12
35	55015035	56	53	35	12
36	55015036	57	54	35	12
37	55015037	59	56	40	12
38	55015038	60	57	40	12
39	55015039	62	59	40	12
40	55015040	63	60	40	12
41	55015041	65	62	40	12
42	55015042	66	63	50	12
43	55015043	68	65	50	12
44	55015044	69	66	50	12
45	55015045	71	68	50	12
46	55015046	72	69	50	14
47	55015047	74	71	50	14

Z	Code	d_e	d_p	d_m	D_1
48	55015048	75	72	50	14
49	55015049	77	74	50	14
50	55015050	78	75	50	14
51	55015051	80	77	60	14
52	55015052	81	78	60	14
53	55015053	83	80	60	14
54	55015054	84	81	60	14
55	55015055	86	83	60	14
56	55015056	87	84	60	16
57	55015057	89	86	60	16
58	55015058	90	87	60	16
59	55015059	92	89	60	16
60	55015060	93	90	60	16
61	55015061	95	92	70	16
62	55015062	96	93	70	16
63	55015063	98	95	70	16
64	55015064	99	96	70	16
65	55015065	101	98	70	16
66	55015066	102	99	70	16
67	55015067	104	101	70	16
68	55015068	105	102	70	16
69	55015069	107	104	70	16
70	55015070	108	105	70	16
72	55015072	111	108	-	16
75	55015075	116	113	-	16
76	55015076	117	114	-	16
80	55015080	123	120	-	16
85	55015085	131	128	-	16
90	55015090	138	135	-	16
95	55015095	146	143	-	16
100	55015100	153	150	-	16
110	55015110	168	165	-	16
114	55015114	174	171	-	16
120	55015120	183	180	-	16
127	55015127	194	191	-	16

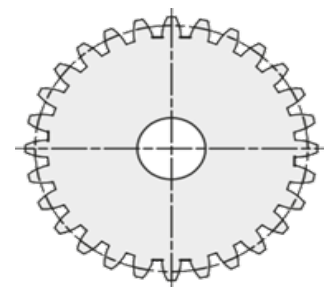
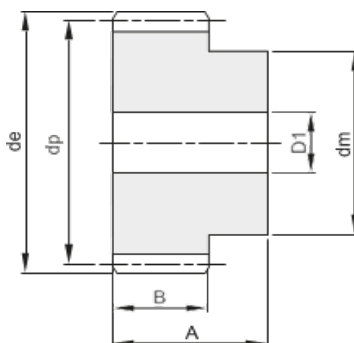
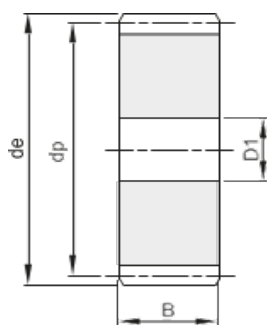
TANDWIELEN CYLINDRICAL GEARS

MOD 1 t/m MOD 8

Module 2

Drukhoek 20°

A	B
35	20



Materiaal: staal C45



Z	Code	de	dp	dm	D1
12	55020012	28	24	18	10
13	55020013	30	26	20	10
14	55020014	32	28	22	10
15	55020015	34	30	24	10
16	55020016	36	32	25	10
17	55020017	38	34	25	10
18	55020018	40	36	25	10
19	55020019	42	38	25	10
20	55020020	44	40	30	10
21	55020021	46	42	30	12
22	55020022	48	44	30	12
23	55020023	50	46	30	12
24	55020024	52	48	35	12
25	55020025	54	50	35	12
26	55020026	56	52	40	12
27	55020027	58	54	40	12
28	55020028	60	56	40	12
29	55020029	62	58	40	14
30	55020030	64	60	40	14
31	55020031	66	62	45	14
32	55020032	68	64	45	14
33	55020033	70	66	45	14
34	55020034	72	68	45	14
35	55020035	74	70	45	14
36	55020036	76	72	45	14
37	55020037	78	74	50	14
38	55020038	80	76	50	14
39	55020039	82	78	50	14
40	55020040	84	80	50	14
41	55020041	86	82	55	16
42	55020042	88	84	55	16
43	55020043	90	86	55	16
44	55020044	92	88	60	16
45	55020045	94	90	60	16
46	55020046	96	92	60	16
47	55020047	98	94	70	16

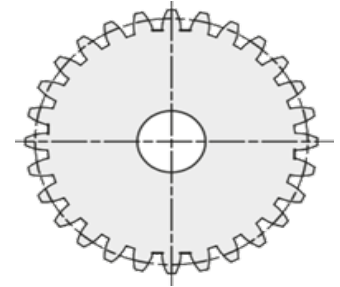
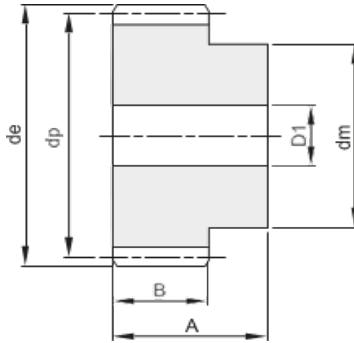
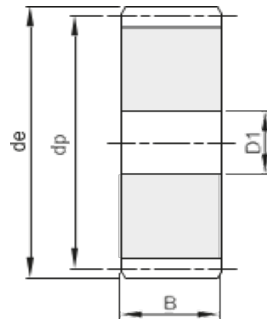
Z	Code	de	dp	dm	D1
48	55020048	100	96	70	16
49	55020049	102	98	70	16
50	55020050	104	100	70	16
51	55020051	106	102	70	16
52	55020052	108	104	70	16
53	55020053	110	106	70	16
54	55020054	112	108	70	16
55	55020055	114	110	70	16
56	55020056	116	112	70	16
57	55020057	118	114	70	16
58	55020058	120	116	70	16
59	55020059	122	118	70	16
60	55020060	124	120	70	16
61	55020061	126	122	80	16
62	55020062	128	124	80	16
63	55020063	130	126	80	16
64	55020064	132	128	80	16
65	55020065	134	130	80	16
66	55020066	136	132	80	16
67	55020067	138	134	80	16
68	55020068	140	136	80	16
69	55020069	142	138	80	16
70	55020070	144	140	80	16
72	55020072	148	144	-	16
75	55020075	154	150	-	16
76	55020076	156	152	-	16
80	55020080	164	160	-	16
85	55020085	174	170	-	16
90	55020090	184	180	-	16
95	55020095	194	190	-	16
100	55020100	204	200	-	16
110	55020110	224	220	-	16
114	55020114	232	228	-	16
120	55020120	244	240	-	16
127	55020127	258	254	-	16

TANDWIELEN CYLINDRICAL GEARS

MOD 1 t/m MOD 8

Module 2,5
Drukhoek 20°

A	B
45	25



Materiaal: staal C45

Z	Code	de	dp	dm	D1
12	55025012	35	30	22	10
13	55025013	38	33	25	10
14	55025014	40	35	28	10
15	55025015	43	38	30	10
16	55025016	45	40	32	12
17	55025017	48	43	35	12
18	55025018	50	45	35	12
19	55025019	53	48	35	12
20	55025020	55	50	40	12
21	55025021	58	53	40	14
22	55025022	60	55	45	14
23	55025023	63	58	45	14
24	55025024	65	60	45	14
25	55025025	68	63	50	14
26	55025026	70	65	50	14
27	55025027	73	68	50	14
28	55025028	75	70	50	14
29	55025029	78	73	50	14
30	55025030	80	75	55	14
31	55025031	83	78	55	16
32	55025032	85	80	55	16
33	55025033	88	83	55	16
34	55025034	90	85	55	16
35	55025035	93	88	60	16
36	55025036	95	90	60	16
37	55025037	98	93	60	16
38	55025038	100	95	60	16
39	55025039	103	98	60	16
40	55025040	105	100	70	16
41	55025041	108	103	70	16
42	55025042	110	105	70	16
43	55025043	113	108	70	16

Z	Code	de	dp	dm	D1
44	55025044	115	110	70	16
45	55025045	118	113	70	16
46	55025046	120	115	70	20
47	55025047	123	118	80	20
48	55025048	125	120	80	20
49	55025049	128	123	80	20
50	55025050	130	125	80	20
51	55025051	133	128	80	20
52	55025052	135	130	90	20
53	55025053	138	133	90	20
54	55025054	140	135	90	20
55	55025055	143	138	90	20
56	55025056	145	140	100	20
57	55025057	148	143	100	20
58	55025058	150	145	100	20
59	55025059	153	148	100	20
60	55025060	155	150	100	20
65	55025065	168	163	-	20
70	55025070	180	175	-	20
72	55025072	185	180	-	20
75	55025075	193	188	-	20
76	55025076	195	190	-	20
80	55025080	205	200	-	25
85	55025085	218	213	-	25
90	55025090	230	225	-	25
95	55025095	243	238	-	25
100	55025100	255	250	-	25
110	55025110	280	275	-	25
114	55025114	290	285	-	25
120	55025120	305	300	-	25
127	55025127	323	318	-	25

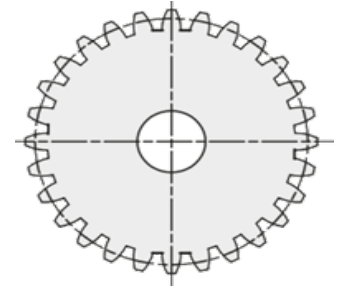
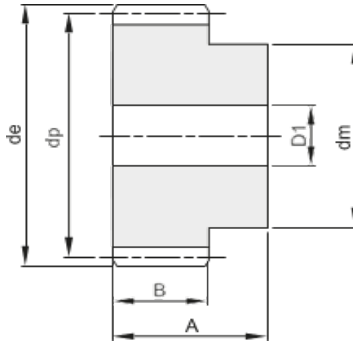
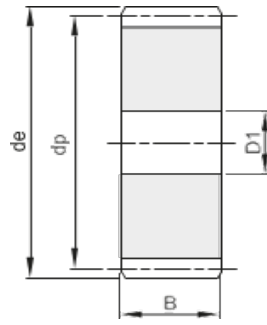
TANDWIELEN CYLINDRICAL GEARS

MOD 1 t/m MOD 8

Module 3

Drukhoek 20°

A	B
50	30



Materiaal: staal C45

Z	Code	de	dp	dm	D1
12	55030012	42	36	27	12
13	55030013	45	39	30	12
14	55030014	48	42	33	12
15	55030015	51	45	35	12
16	55030016	54	48	38	14
17	55030017	57	51	42	14
18	55030018	60	54	45	14
19	55030019	63	57	45	14
20	55030020	66	60	45	14
21	55030021	69	63	45	16
22	55030022	72	66	50	16
23	55030023	75	69	50	16
24	55030024	78	72	50	16
25	55030025	81	75	60	16
26	55030026	84	78	60	16
27	55030027	87	81	60	16
28	55030028	90	84	60	16
29	55030029	93	87	60	16
30	55030030	96	90	60	16
31	55030031	99	93	60	16
32	55030032	102	96	70	16
33	55030033	105	99	70	16
34	55030034	108	102	70	16
35	55030035	111	105	70	16
36	55030036	114	108	70	20
37	55030037	117	111	70	20
38	55030038	120	114	80	20
39	55030039	123	117	80	20

Z	Code	de	dp	dm	D1
40	55030040	126	120	80	20
41	55030041	129	123	80	20
42	55030042	132	126	80	20
43	55030043	135	129	80	20
44	55030044	138	132	90	20
45	55030045	141	135	90	20
46	55030046	144	138	90	20
47	55030047	147	141	100	20
48	55030048	150	144	100	20
50	55030050	156	150	-	20
52	55030052	162	156	-	20
55	55030055	171	165	-	20
57	55030057	177	171	-	20
60	55030060	186	180	-	20
65	55030065	201	195	-	20
70	55030070	216	210	-	25
72	55030072	222	216	-	25
75	55030075	231	225	-	25
76	55030076	234	228	-	25
80	55030080	246	240	-	25
85	55030085	261	255	-	25
90	55030090	276	270	-	25
95	55030095	291	285	-	25
100	55030100	306	300	-	25
110	55030110	336	320	-	25
114	55030114	348	342	-	30
120	55030120	366	360	-	30
127	55030127	387	381	-	30

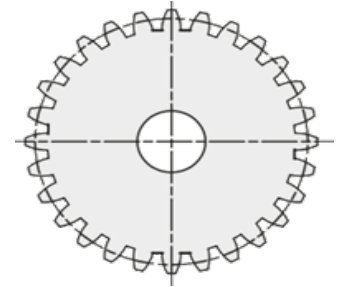
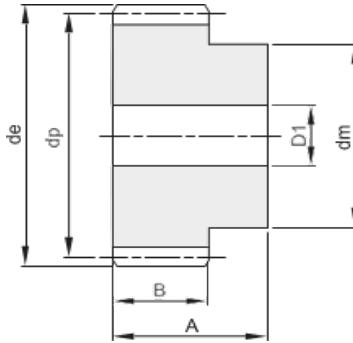
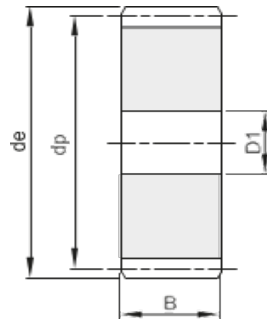
TANDWIELEN CYLINDRICAL GEARS

MOD 1 t/m MOD 8

Module 4

Drukhoek 20°

A	B
60	40



Materiaal: staal C45

Z	Code	d_e	d_p	d_m	D_1
12	55040012	56	48	35	14
13	55040013	60	52	40	14
14	55040014	64	56	45	14
15	55040015	68	60	45	14
16	55040016	72	64	50	16
17	55040017	76	68	50	16
18	55040018	80	72	50	16
19	55040019	84	76	60	16
20	55040020	88	80	60	16
21	55040021	92	84	70	16
22	55040022	96	88	70	16
23	55040023	100	92	75	20
24	55040024	104	96	75	20
25	55040025	108	100	75	20
26	55040026	112	104	75	20
27	55040027	116	108	75	20
28	55040028	120	112	75	20
29	55040029	124	116	75	20
30	55040030	128	120	75	20
31	55040031	132	124	80	20
32	55040032	136	128	80	20
33	55040033	140	132	80	20
34	55040034	144	136	80	20

Z	Code	d_e	d_p	d_m	D_1
35	55040035	148	140	80	20
36	55040036	152	144	80	25
38	55040038	160	152	-	25
40	55040040	168	160	-	25
45	55040045	188	180	-	25
48	55040048	200	192	-	25
50	55040050	208	200	-	25
52	55040052	216	208	-	25
55	55040055	228	220	-	25
57	55040057	236	228	-	25
60	55040060	248	240	-	25
65	55040065	268	260	-	25
70	55040070	288	280	-	25
75	55040075	308	300	-	25
76	55040076	312	304	-	30
80	55040080	328	320	-	30
85	55040085	348	340	-	30
90	55040090	368	360	-	30
95	55040095	388	380	-	30
100	55040100	408	400	-	30
110	55040110	448	440	-	30
114	55040114	464	456	-	30

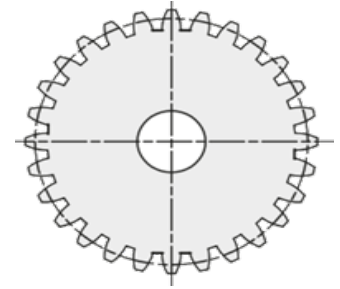
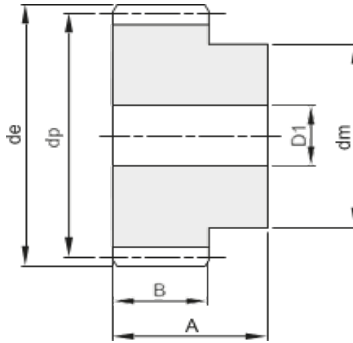
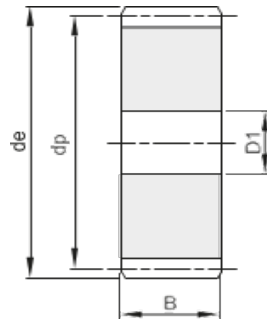
TANDWIELEN CYLINDRICAL GEARS

MOD 1 t/m MOD 8

Module 5

Drukhoek 20°

A	B
75	50



Materiaal: staal C45

Z	Code	d_e	d_p	d_m	D_1
12	55050012	70	60	45	20
13	55050013	75	65	50	20
14	55050014	80	70	55	20
15	55050015	85	75	60	20
16	55050016	90	80	65	20
17	55050017	95	85	70	20
18	55050018	100	90	70	20
19	55050019	105	95	70	20
20	55050020	110	100	80	20
21	55050021	115	105	80	20
22	55050022	120	110	80	20
23	55050023	125	115	90	20
24	55050024	130	120	90	20
25	55050025	135	125	90	20
26	55050026	140	130	100	20
27	55050027	145	135	100	20
28	55050028	150	140	100	25
29	55050029	155	145	110	25
30	55050030	160	150	110	25
32	55050032	170	160	-	25
35	55050035	185	175	-	25

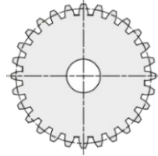
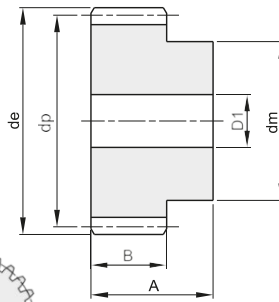
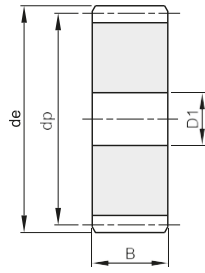
Z	Code	d_e	d_p	d_m	D_1
38	55050035	200	190	-	25
40	55050040	210	200	-	25
45	55050045	235	225	-	25
48	55050048	250	240	-	25
50	55050050	260	250	-	30
52	55050052	270	260	-	30
55	55050055	285	275	-	30
57	55050057	295	285	-	30
60	55050060	310	300	-	30
65	55050065	335	325	-	30
70	55050070	360	350	-	30
75	55050075	385	375	-	30
76	55050076	390	380	-	30
80	55050080	410	400	-	30
85	55050085	435	425	-	30
90	55050090	460	450	-	30
95	55050095	485	475	-	30
100	55050100	510	500	-	30
110	55050110	560	550	-	30
114	55050114	580	570	-	30

TANDWIELEN CYLINDRICAL GEARS

MOD 1 t/m MOD 8

Module 6

Drukhoek 20°



Module 8

Drukhoek 20°

A	B
110	80

A	B
80	60

Materiaal: staal C45



Z	Code	de	dp	dm	D1
12	55060012	84	72	54	20
13	55060013	90	78	60	20
15	55060015	102	90	70	20
16	55060016	108	95	75	20
18	55060018	120	108	80	20
20	55060020	132	120	90	20
24	55060024	156	144	110	25
25	55060025	162	150	110	25
28	55060028	180	168	-	25
30	55060030	192	180	-	25
32	55060032	204	192	-	25
35	55060035	222	210	-	25
38	55060038	240	228	-	25
40	55060040	252	240	-	25

Z	Code	de	dp	dm	D1
15	55080015	136	120	90	25
18	55080018	160	144	100	25
20	55080020	176	160	120	30
24	55080024	208	192	150	30
25	55080025	216	200	150	30
30	55080030	256	240	190	30

