

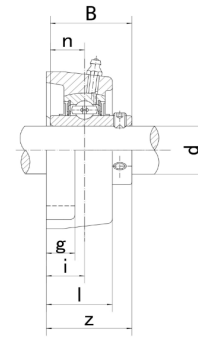
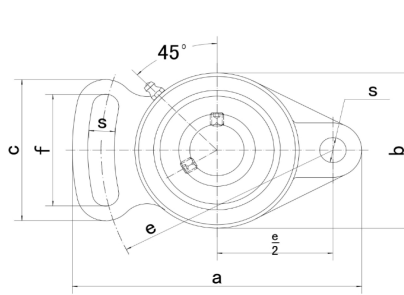
TWEEPUNTS FLENSLAGERBLOKKEN

TWO BOLT FLANGE UNITS

Gegoten lagerblokken / UCFA201 - UCFA213

UCFA

- * 234... FK
- * 230... FK alternatief
- * 231... FK met kap
- * 235... FK met kap alternatief
- * 200... Neutraal



| Type | Code* | Afmetingen (mm / in.) | | | | | | | | | | | | | Bout mm/in. | Lagertype | Huis | Gewicht (kg) |
|---------|-----------|-------------------------|---------|---------|--------|-------|---------|-------|---------|---------|---------|---------|--------|-------|----------------|-----------|-------|-----------------|
| | | d | a | e | i | g | l | s | b | z | f | c | B | n | | | | |
| UCFA201 | 234201007 | 12 | 98 | 78 | 15 | 12 | 25,5 | 10 | 60 | 33,3 | 40 | 50 | 31 | 12,7 | M8 | UC201 | FA204 | 0,46 |
| 201-8 | - | 1/2 | 3-55/64 | 3-5/64 | 19/32 | 15/32 | 1 | 25/64 | 2-3/8 | 1-5/16 | 1-37/64 | 1-31/32 | 1.2205 | 0.500 | 5/16 | UC201-8 | | 0,45 |
| UCFA202 | 234202007 | 15 | 98 | 78 | 15 | 12 | 25,5 | 10 | 60 | 33,3 | 40 | 50 | 31 | 12,7 | M8 | UC202 | FA204 | 0,45 |
| 202-9 | - | 9/16 | 3-55/64 | 3-5/64 | 19/32 | 15/32 | 1 | 25/64 | 2-3/8 | 1-5/16 | 1-37/64 | 1-31/32 | 1.2205 | 0.500 | 5/16 | UC202-9 | | 0,45 |
| 202-10 | - | 5/8 | | | | | | | | | | | | | | UC202-10 | | 0,45 |
| UCFA203 | 234203007 | 17 | 98 | 78 | 15 | 12 | 25,5 | 10 | 60 | 33,3 | 40 | 50 | 31 | 12,7 | M8 | UC203 | FA204 | 0,44 |
| 203-11 | - | 11/16 | 3-55/64 | 3-5/64 | 19/32 | 15/32 | 1 | 25/64 | 2-3/8 | 1-5/16 | 1-37/64 | 1-31/32 | 1.2205 | 0.500 | 5/16 | UC203-11 | | 0,43 |
| UCFA204 | 234204007 | 20 | 98 | 78 | 15 | 12 | 25,5 | 10 | 60 | 33,3 | 40 | 50 | 31 | 12,7 | M8 | UC204 | FA204 | 0,42 |
| 204-12 | - | 3/4 | 3-55/64 | 3-5/64 | 19/32 | 15/32 | 1 | 25/64 | 2-3/8 | 1-5/16 | 1-37/64 | 1-31/32 | 1.2205 | 0.500 | 5/16 | UC204-12 | | 0,42 |
| UCFA205 | 234205007 | 25 | 124 | 98 | 16 | 14 | 27 | 13 | 70 | 35,8 | 51 | 65 | 34,1 | 14,3 | M10 | UC205 | | 0,65 |
| 205-13 | - | 13/16 | | | | | | | | | | | | | | UC205-13 | FA205 | 0,68 |
| 205-14 | - | 7/8 | 4-7/8 | 3-55/64 | 5/8 | 35/64 | 1-1/16 | 33/64 | 2-3/4 | 1-13/32 | 2-1/64 | 2-9/16 | 1.3425 | 0.563 | 3/8 | UC205-14 | | 0,67 |
| 205-15 | - | 15/16 | | | | | | | | | | | | | | UC205-15 | | 0,65 |
| 205-16 | - | 1 | | | | | | | | | | | | | | UC205-16 | | 0,64 |
| UCFA206 | 234206007 | 30 | 141 | 115 | 18 | 14 | 31 | 13 | 83 | 40,2 | 58 | 72 | 38,1 | 15,9 | M10 | UC206 | | 0,95 |
| 206-17 | - | 1-1/16 | | | | | | | | | | | | | | UC206-17 | FA206 | 0,98 |
| 206-18 | - | 1-1/8 | 5-35/64 | 4-17/32 | 45/64 | 35/64 | 1-7/32 | 33/64 | 3-17/64 | 1-19/32 | 2-9/32 | 2-27/32 | 1.5000 | 0.626 | 3/8 | UC206-18 | | 0,97 |
| 206-19 | - | 1-3/16 | | | | | | | | | | | | | | UC206-19 | | 0,95 |
| 206-20 | - | 1-1/4 | | | | | | | | | | | | | | UC206-20 | | 0,94 |
| UCFA207 | 234207007 | 35 | 155 | 128 | 19 | 16 | 34 | 15 | 96 | 44,4 | 66 | 82 | 42,9 | 17,5 | M12 | UC207 | | 1,33 |
| 207-20 | - | 1-1/4 | | | | | | | | | | | | | | UC207-20 | FA207 | 1,40 |
| 207-21 | - | 1-5/16 | 6-7/64 | 5-3/64 | 3/4 | 5/8 | 1-11/32 | 19/32 | 3-25/32 | 1-3/4 | 2-19/32 | 3-15/64 | 1.6890 | 0.689 | 7/16 | UC207-21 | | 1,37 |
| 207-22 | - | 1-3/8 | | | | | | | | | | | | | | UC207-22 | | 1,34 |
| 207-23 | - | 1-7/16 | | | | | | | | | | | | | | UC207-23 | | 1,31 |
| UCFA208 | 234208007 | 40 | 171 | 142 | 21 | 16 | 38 | 15 | 105 | 51,2 | 71 | 87 | 49,2 | 19 | M12 | UC208 | | 1,73 |
| 208-24 | - | 1-1/2 | 47/64 | 5-19/32 | 53/64 | 5/8 | 1-1/2 | 19/32 | 4-9/64 | 2-1/64 | 2-51/64 | 3-27/64 | 1.9370 | 0.748 | 7/16 | UC208-24 | FA208 | 1,77 |
| 208-25 | - | 1-9/16 | | | | | | | | | | | | | | UC208-25 | | 1,74 |
| UCFA209 | 234209007 | 45 | 179 | 146 | 22 | 18 | 40 | 17 | 111 | 52,2 | 72 | 90 | 49,2 | 19 | M14 | UC209 | | 1,98 |
| 209-26 | - | 1-5/8 | | | | | | | | | | | | | | UC209-26 | FA209 | 2,08 |
| 209-27 | - | 1-11/16 | 7-3/64 | 5-3/4 | 55/64 | 45/64 | 1-37/64 | 43/64 | 4-3/8 | 2-1/16 | 2-53/64 | 3-35/64 | 1.9370 | 0.748 | 1/2 | UC209-27 | | 2,04 |
| 209-28 | - | 1-3/4 | | | | | | | | | | | | | | UC209-28 | | 2,00 |
| UCFA210 | 234210007 | 50 | 189 | 155 | 22 | 18 | 40 | 17 | 116 | 54,6 | 76 | 94 | 51,6 | 19 | M14 | UC210 | | 2,12 |
| 210-29 | - | 1-13/16 | | | | | | | | | | | | | | UC210-29 | FA210 | 2,24 |
| 210-30 | - | 1-7/8 | 7-7/16 | 6-7/64 | 55/64 | 45/64 | 1-37/64 | 43/64 | 4-9/16 | 2-5/32 | 3 | 3-45/64 | 2.0315 | 0.748 | 1/2 | UC210-30 | | 2,19 |
| 210-31 | - | 1-15/16 | | | | | | | | | | | | | | UC210-31 | | 2,14 |
| 210-32 | - | 2 | | | | | | | | | | | | | | UC210-32 | | 2,10 |
| UCFA211 | 234211007 | 55 | 216 | 182 | 25 | 20 | 44 | 17 | 133 | 58,4 | 86 | 104 | 55,6 | 22,2 | M14 | UC211 | | 3,11 |
| 211-32 | - | 2 | | | | | | | | | | | | | | UC211-32 | FA211 | 3,26 |
| 211-33 | - | 2-1/16 | 8-1/2 | 7-11/64 | 63/64 | 25/32 | 1-47/64 | 43/64 | 5-51/64 | 2-5/16 | 3-25/64 | 4-3/32 | 2.1890 | 0.874 | 1/2 | UC211-33 | | 3,20 |
| 211-34 | - | 2-1/8 | | | | | | | | | | | | | | UC211-34 | | 3,16 |
| 211-35 | - | 2-3/16 | | | | | | | | | | | | | | UC211-35 | | 3,09 |
| UCFA212 | 234212347 | 60 | 240 | 202 | 29 | 20 | 48 | 19 | 140 | 68,7 | 100 | 118 | 65,1 | 25,4 | M16 | UC212 | | 3,76 |
| 212-36 | - | 2-1/4 | | | | | | | | | | | | | | UC212-36 | FA212 | 3,89 |
| 212-37 | - | 2-5/16 | 9-29/64 | 7-61/64 | 1-9/64 | 25/32 | 1-7/8 | 3/4 | 5-1/2 | 2-23/32 | 3-15/16 | 4-41/64 | 2.5630 | 1.000 | 5/8 | UC212-37 | | 3,81 |
| 212-38 | - | 2-3/8 | | | | | | | | | | | | | | UC212-38 | | 3,74 |
| 212-39 | - | 2-7/16 | | | | | | | | | | | | | | UC212-39 | | 3,67 |
| UCFA213 | 234213007 | 65 | 250 | 210 | 30 | 20 | 50 | 19 | 155 | 69,7 | 102 | 122 | 65,1 | 25,4 | M16 | UC213 | | 4,70 |
| 213-40 | - | 2-1/2 | 9-27/32 | 8-17/64 | 1-3/16 | 25/32 | 1-31/32 | 3/4 | 6-3/32 | 2-3/4 | 4-1/64 | 4-51/64 | 2.5630 | 1.000 | 5/8 | UC213-40 | FA213 | 4,79 |
| 213-41 | - | 2-9/16 | | | | | | | | | | | | | | UC213-41 | | 4,70 |

