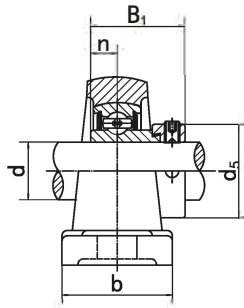


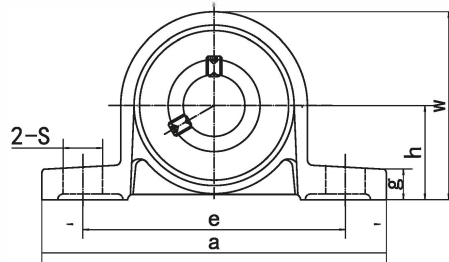
- Rustproof housings made with a special alloy
- Bearings are high carbon chromium bearing steel

**UP000 type\***

Pillow Blocks  
With eccentric locking collar

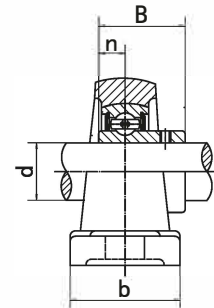


UP000



**KP000 type\***

Pillow Blocks  
With set screw locking



KP000

Unit NO.	Dimensions ( mm / in. )											Bolt Size mm/in.	Bearing No.	Housing No.	Weight (kg)
	d	h	a	e	b	S	g	w	B <sub>1</sub>	n	d <sub>5</sub>				
UP000	10	18.0 23/32	67.0 2-41/64	53.0 2-3/32	16.0 5/8	7.0 9/32	6.0 15/64	35.0 1-3/8	17.5 0.689	4.0 0.157	17.0 43/64	M6	U000	P000	0.08
UP001	12	19.0 3/4	71.0 2-51/64	56.0 2-13/64	16.0 5/8	7.0 9/32	6.0 15/64	38.0 1-1/2	17.5 0.689	4.0 0.157	19.0 3/4		U001	P001	0.09
UP002	15	22.0 7/8	80.0 3-5/32	63.0 2-31/64	16.0 5/8	7.0 9/32	7.0 9/32	43.0 1-11/16	18.5 0.728	4.5 0.177	22.0 65/64		U002	P002	0.13
UP003	17	24.0 15/16	85.0 3-11/32	67.0 2-41/64	18.0 23/32	7.0 9/32	7.0 9/32	47.0 1-27/32	20.5 0.807	5.0 0.197	25.0 31/32	M6	U003	P003	0.16
UP004	20	28.0 1-3/32	100.0 3-15/16	80.0 3-5/32	20.0 25/32	9.0 23/64	9.0 23/64	55.0 2-11/64	24.5 0.965	6.0 0.236	30.0 1-3/16	M8	U004	P04-5	0.23
UP005	25	32.0 1-17/64	112.0 4-13/32	90.0 3-35/64	20.0 25/32	10.0 25/64	10.0 25/64	62.0 2-7/16	25.5 1.000	6.5 0.256	36.0 1-27/64	M8	U005	P05-6	0.29
UP006	30	36.0 5-13/64	132.0 5-13/64	106.0 4-11/64	26.0 1-1/32	13.0 33/64	11.0 7/16	70.0 2-3/4	26.5 1.040	6.5 0.256	42.0 1-21/32	M10	U006	P06-7	0.45

Unit NO.	Dimensions ( mm / in. )											Bolt Size mm/in.	Bearing No.	Housing No.	Weight (kg)
	d	h	a	e	b	S	g	w	B	n					
KP000	10	18.0 23/32	67.0 2-41/64	53.0 2-3/32	16.0 5/8	7.0 9/32	6.0 15/64	35.0 1-3/8	14.0 0.551	4.0 0.157		M6	K000	P000	0.07
KP001	12	19.0 3/4	71.0 2-51/64	56.0 2-13/64	16.0 5/8	7.0 9/32	6.0 15/64	38.0 1-1/2	14.5 0.571	4.0 0.157			K001	P001	0.09
KP002	15	22.0 7/8	80.0 3-5/32	63.0 2-31/64	16.0 5/8	7.0 9/32	7.0 9/32	43.0 1-11/16	16.5 0.650	4.5 0.177			K002	P002	0.13
KP003	17	24.0 15/16	85.0 3-11/32	67.0 2-41/64	18.0 23/32	7.0 9/32	7.0 9/32	47.0 1-27/32	17.5 0.689	5.0 0.197		M6	K003	P003	0.16
KP004	20	28.0 1-3/32	100.0 3-15/16	80.0 3-5/32	20.0 25/32	9.0 23/64	9.0 23/64	55.0 2-11/64	21.0 0.827	6.0 0.236		M8	K004	P04-5	0.23
KP005	25	32.0 1-17/64	112.0 4-13/32	90.0 3-35/64	20.0 25/32	10.0 25/64	10.0 25/64	62.0 2-7/16	22.5 0.886	6.5 0.256		M8	K005	P05-6	0.29
KP006	30	36.0 5-13/64	132.0 5-13/64	106.0 4-11/64	26.0 1-1/32	13.0 33/64	11.0 7/16	70.0 2-3/4	24.5 0.965	6.5 0.256		M10	K006	P06-7	0.45

\*ALSO AVAILABLE WITH STAINLESS STEEL INSERT AND HOUSING