

AXIALE GEWRICHTSLAGERS SPHERICAL PLAIN THRUST BEARINGS

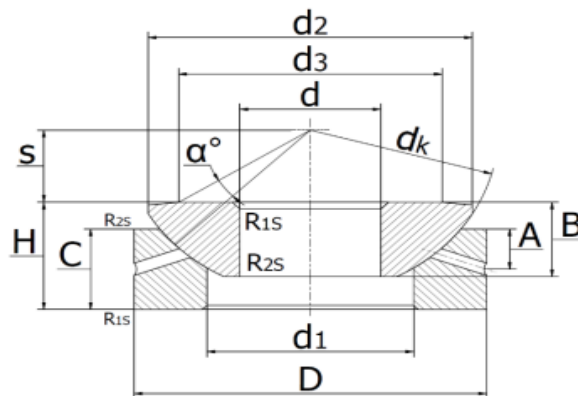
Onderhoudsplichtig

GE10AX - GE200AX

RVS op aanvraag

GE..AX

Staal / staal



DIN ISO 12 240-3 (GX..S)

Type	Code	Afmetingen (mm)											Draagkrachten (kN)			(kg)		
		d	D	H	d _k	d ₁	d ₂	d ₃	B	C	S	A	R _{1Smin}	R _{2Smin}	α	dyn. C	stat. C0	Gewicht
GE10AX	15025010	10	30	9,5	32	16,5	27,5	21	7,9	6,0	7,0	3,0	0,60	0,20	10°	24,0	120	0,04
GE12AX	15025012	12	35	13,0	37	19,5	32,0	24	9,3	9,0	8,0	4,0	0,60	0,20	9°	32,5	163	0,07
GE15AX	15025015	15	42	15,0	45	24,0	38,9	29	10,7	11,0	10,0	5,0	0,60	0,20	7°	52,0	260	0,12
GE17AX	15025017	17	47	16,0	50	28,0	43,4	34	11,5	11,5	11,0	5,0	0,60	0,15	6°	58,5	300	0,16
GE20AX	15025020	20	55	20,0	60	33,5	50,0	40	14,3	13,0	12,5	6,0	1,00	0,30	6°	75,0	375	0,25
GE25AX	15025025	25	62	22,5	66	34,5	57,5	45	16,0	17,0	14,0	6,0	1,00	0,30	7°	129	640	0,38
GE30AX	15025030	30	75	26,0	80	44,0	69,0	56	18,0	19,5	17,5	8,0	1,00	0,30	6°	170	850	0,65
GE35AX	15025035	35	90	28,0	98	52,0	84,0	66	22,0	20,0	22,0	8,0	1,00	0,30	6°	260	1290	1,00
GE40AX	15025040	40	105	32,0	114	59,0	98,0	78	27,0	22,0	24,5	9,0	1,00	0,30	6°	375	1860	1,60
GE45AX	15025045	45	120	36,5	130	68,0	112,0	89	31,0	25,0	27,5	11,0	1,00	0,30	6°	490	2450	2,40
GE50AX	15025050	50	130	42,5	140	69,0	122,5	98	33,5	32,0	30,0	10,0	1,00	0,30	5°	655	3250	3,30
GE60AX	15025060	60	150	45,0	160	86,0	140,0	108	37,0	33,0	35,0	12,5	1,00	0,30	7°	735	3650	4,50
GE70AX	15025070	70	160	50,0	170	95,0	149,5	121	40,0	36,0	35,0	13,5	1,00	0,30	6°	800	4050	5,50
GE80AX	15025080	80	180	50,0	194	108,0	168,0	130	42,0	36,0	42,5	14,5	1,00	0,30	6°	1040	5200	7,00
GE100AX	15025100	100	210	59,0	220	133,0	195,5	155	50,0	42,0	45,0	15,0	1,00	0,30	7°	1200	6000	10,5
GE120AX	15025120	120	230	64,0	245	154,0	214,0	170	52,0	45,0	52,5	16,5	1,00	0,30	8°	1250	6200	13,0
GE140AX	15025140	140	260	72,0	272	176,0	244,0	198	61,0	50,0	52,5	23,0	1,50	0,60	6°	1630	8150	18,0
GE160AX	15025160	160	290	77,0	310	199,0	272,0	213	65,0	52,0	65,0	23,0	1,50	0,60	7°	1900	9500	23,0
GE180AX	15025180	180	320	86,0	335	224,0	300,0	240	70,0	60,0	67,5	26,0	1,50	0,60	8°	2120	10600	31,0
GE200AX	15025200	200	340	87,0	358	246,0	321,0	265	74,0	60,0	70,0	27,0	1,50	0,60	8°	2360	11800	34,0