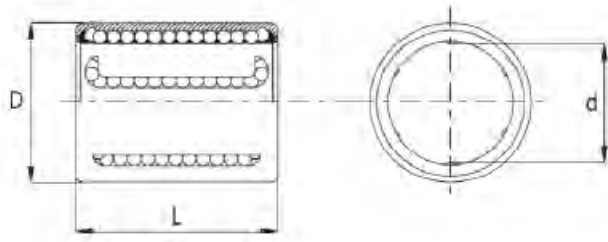


LINEAIRE LAGERS

SERIE KH



Materiaal: Chromstaal

| Artikel | Code | d | D | L | Draaggetallen kN | |
|---------------|----------|----|----|----|------------------|---------------|
| | | | | | Dynamisch (Cr) | Statisch (Co) |
| KH 06 22 (PP) | 25006221 | 6 | 12 | 22 | 400 | 239 |
| KH 08 24 (PP) | 25008241 | 8 | 15 | 24 | 435 | 280 |
| KH 10 26 (PP) | 25010261 | 10 | 17 | 26 | 500 | 370 |
| KH 12 28 (PP) | 25012281 | 12 | 19 | 28 | 620 | 510 |
| KH 14 28 (PP) | 25014281 | 14 | 21 | 28 | 620 | 520 |
| KH 16 30 (PP) | 25016301 | 16 | 24 | 30 | 800 | 620 |
| KH 20 30 (PP) | 25020301 | 20 | 28 | 30 | 950 | 790 |
| KH 25 40 (PP) | 25025401 | 25 | 35 | 40 | 1990 | 1670 |
| KH 30 50 (PP) | 25030501 | 30 | 40 | 50 | 2800 | 2700 |
| KH 40 60 (PP) | 25040601 | 40 | 52 | 60 | 4400 | 4450 |
| KH 50 70 (PP) | 25050701 | 50 | 62 | 70 | 5500 | 6300 |

Verkrijgbaar in:

KH-d-PP dubbelzijdig afgedicht
KH-d zonder afdichting

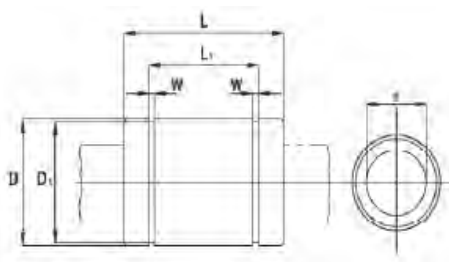
Vergelijkingstabel

| NBS | INA | FAG | SKF |
|--------|-----------------------|------------------------|-----------|
| KH.. | KH.. (LBBS..) | LNA.. (LFA..) | LBBR.. |
| KH..PP | KH..PP (LBBS..2LS) | LNA..2RS (LFA..2RS) | LBBR..2RS |



LINEAIRE LAGERS

SERIE KB



Materiaal: Chroomstaal

| Artikel | Code | Aantal kogel rijen | d | D | L | L1 | W | D1 | Draaggetallen kN | |
|----------------|----------|--------------------|----|----|-----|-------|------|------|------------------|---------------|
| | | | | | | | | | Dynamisch (Cr) | Statisch (Co) |
| KB 05 22 (PP) | 25105221 | 4 | 5 | 12 | 22 | 14,5 | 1,1 | 11,5 | 210 | 270 |
| KB 08 25 (PP) | 25108251 | 4 | 8 | 16 | 25 | 16,5 | 1,1 | 15,2 | 270 | 410 |
| KB 10 29 (PP) | 25110291 | 4 | 10 | 19 | 29 | 22 | 1,3 | 18 | 370 | 470 |
| KB 12 32 (PP) | 25112321 | 4 | 12 | 22 | 32 | 22,9 | 1,3 | 21 | 520 | 790 |
| KB 16 36 (PP) | 25116361 | 5 | 16 | 26 | 36 | 24,9 | 1,3 | 24,9 | 590 | 910 |
| KB 20 45 (PP) | 25120451 | 5 | 20 | 32 | 45 | 31,5 | 1,6 | 30,3 | 880 | 1400 |
| KB 25 58 (PP) | 25125581 | 6 | 25 | 40 | 58 | 44,1 | 1,85 | 37,5 | 1000 | 1600 |
| KB 30 68 (PP) | 25130681 | 6 | 30 | 47 | 68 | 52,1 | 1,85 | 44,5 | 1600 | 2800 |
| KB 40 80 (PP) | 25140801 | 6 | 40 | 62 | 80 | 60,6 | 2,15 | 59 | 2200 | 4000 |
| KB 50 100 (PP) | 25150100 | 6 | 50 | 75 | 100 | 77,6 | 2,65 | 72 | 3900 | 8100 |
| KB 60 125 (PP) | 25160125 | 6 | 60 | 90 | 125 | 101,7 | 3,15 | 86,5 | 4800 | 10200 |

Verkrijgbaar in:

KB-d-PP dubbelzijdig afgedicht

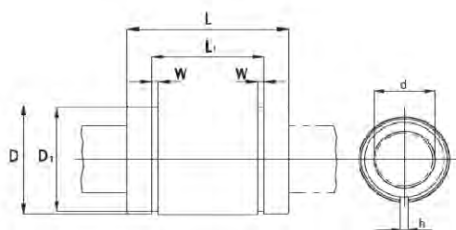
KB-d zonder afdichting

Vergelijkingstabel

| NBS | INA | SKF | KBS | IKO |
|---------|---------|----------------|-----------|-----------|
| KB.. | KB.. | LBAR/LBCR.. | LME.. | LBE.. |
| KB..PP | KB..PP | LBAR/LBCR..2LS | LME..UU | LBE..UU |
| KBS.. | KBS.. | LBAS.. | LME..AJ | LBE..AJ |
| KBS..PP | KBS..PP | LBAS..2LS | LME..UUAJ | LBE..UUAJ |
| KBO | KBO | LBAT/LBCT.. | LME..OP | LBE..OP |
| KBO.PP | KBO..PP | LBAT/LBCT..2LS | LME..UUOP | LBE..UUOP |

LINEAIRE LAGERS

SERIE KBS



Materiaal: Chroomstaal

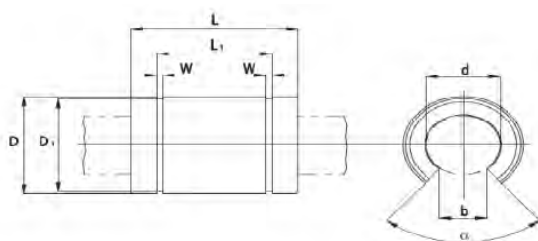
| Artikel | Code | Aantal kogel rijen | d | D | L | L1 | W | D1 | Draaggetallen kN | |
|-----------------|----------|--------------------|----|----|-----|-------|------|------|------------------|---------------|
| | | | | | | | | | Dynamisch (Cr) | Statisch (Co) |
| KBS 05 22 (PP) | 25205221 | 4 | 5 | 12 | 22 | 14,5 | 1,1 | 11,5 | 210 | 270 |
| KBS 08 25 (PP) | 25208251 | 4 | 8 | 16 | 25 | 16,5 | 1,1 | 15,2 | 270 | 410 |
| KBS 10 29 (PP) | 25210291 | 4 | 10 | 19 | 29 | 22 | 1,3 | 18 | 370 | 470 |
| KBS 12 32 (PP) | 25212321 | 4 | 12 | 22 | 32 | 22,9 | 1,3 | 21 | 520 | 790 |
| KBS 16 36 (PP) | 25216361 | 5 | 16 | 26 | 36 | 24,9 | 1,3 | 24,9 | 590 | 910 |
| KBS 20 45 (PP) | 25220451 | 5 | 20 | 32 | 45 | 31,5 | 1,6 | 30,3 | 880 | 1400 |
| KBS 25 58 (PP) | 25225581 | 6 | 25 | 40 | 58 | 44,1 | 1,85 | 37,5 | 1000 | 1600 |
| KBS 30 68 (PP) | 25230681 | 6 | 30 | 47 | 68 | 52,1 | 1,85 | 44,5 | 1600 | 2800 |
| KBS 40 80 (PP) | 25240801 | 6 | 40 | 62 | 80 | 60,6 | 2,15 | 59 | 2200 | 4000 |
| KBS 50 100 (PP) | 25250100 | 6 | 50 | 75 | 100 | 77,6 | 2,65 | 72 | 3900 | 8100 |
| KBS 60 125 (PP) | 25260125 | 6 | 60 | 90 | 125 | 101,7 | 3,15 | 86,5 | 4800 | 10200 |

Verkrijgbaar in:

KBS-d-PP dubbelzijdig afgedicht

KBS-d zonder afdichting

SERIE KBO



Materiaal: Chroomstaal

| Artikel | Code | Aantal kogel rijen | d | D | L | L1 | W | D1 | Draaggetallen kN | |
|-----------------|----------|--------------------|----|----|-----|-------|------|------|------------------|---------------|
| | | | | | | | | | Dynamisch (Cr) | Statisch (Co) |
| KBO 10 29 (PP) | 25310291 | 3 | 10 | 19 | 29 | 22 | 1,3 | 18 | 380 | 560 |
| KBO 12 32 (PP) | 25312321 | 3 | 12 | 22 | 32 | 22,9 | 1,3 | 21 | 520 | 790 |
| KBO 16 36 (PP) | 25316361 | 5 | 16 | 26 | 36 | 24,9 | 1,3 | 24,9 | 590 | 910 |
| KBO 20 45 (PP) | 25320451 | 5 | 20 | 32 | 45 | 31,5 | 1,6 | 30,3 | 880 | 1400 |
| KBO 25 58 (PP) | 25325581 | 5 | 25 | 40 | 58 | 44,1 | 1,85 | 37,5 | 1000 | 1600 |
| KBO 30 68 (PP) | 25330681 | 5 | 30 | 47 | 68 | 52,1 | 1,85 | 44,5 | 1600 | 2800 |
| KBO 40 80 (PP) | 25340801 | 5 | 40 | 62 | 80 | 60,6 | 2,15 | 59 | 2200 | 4000 |
| KBO 50 100 (PP) | 25350100 | 6 | 50 | 75 | 100 | 77,6 | 2,65 | 72 | 3900 | 8100 |
| KBO 60 125 (PP) | 25360125 | 6 | 60 | 90 | 125 | 101,7 | 3,15 | 86,5 | 4800 | 10200 |

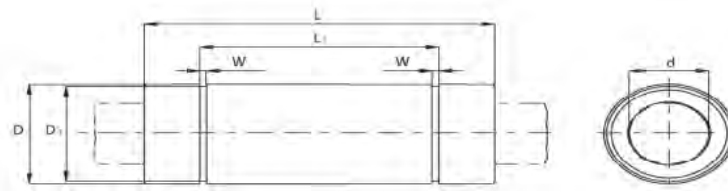
Verkrijgbaar in:

KBO-d-PP dubbelzijdig afgedicht

KBO-d zonder afdichting

LINEAIRE LAGERS

SERIE KBL



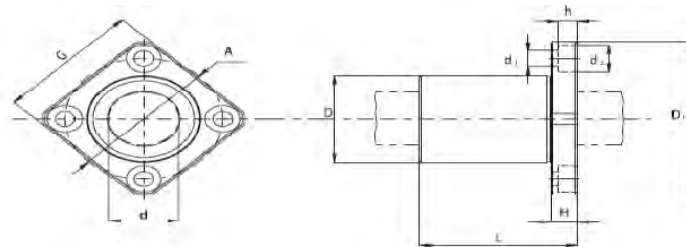
Materiaal: Chromstaal

| Artikel | Code | Aantal kogel rijen | d | D | L | L1 | W | D1 | Draaggetallen kN | |
|-----------------|----------|--------------------|----|----|-----|-------|------|------|------------------|---------------|
| | | | | | | | | | Dynamisch (Cr) | Statisch (Co) |
| KBL 08 45 (PP) | 25408451 | 4 | 8 | 16 | 45 | 33 | 1,1 | 15,2 | 431 | 784 |
| KBL 12 57 (PP) | 25412571 | 4 | 12 | 22 | 57 | 45,8 | 1,3 | 21 | 657 | 1200 |
| KBL 16 70 (PP) | 25416701 | 5 | 16 | 26 | 70 | 49,8 | 1,3 | 24,9 | 1230 | 2350 |
| KBL 20 80 (PP) | 25420801 | 5 | 20 | 32 | 80 | 61 | 1,6 | 30,5 | 1400 | 2750 |
| KBL 25 112 (PP) | 25425112 | 6 | 25 | 40 | 112 | 82 | 1,85 | 38 | 1560 | 3140 |
| KBL 30 123 (PP) | 25430123 | 6 | 30 | 47 | 123 | 104,2 | 1,85 | 44,5 | 2490 | 5490 |
| KBL 40 154 (PP) | 25440154 | 6 | 40 | 62 | 154 | 121,2 | 2,15 | 59 | 3430 | 8040 |
| KBL 50 192 (PP) | 25450192 | 6 | 50 | 75 | 192 | 155,2 | 2,65 | 72 | 6080 | 15900 |
| KBL 60 211 (PP) | 25460211 | 6 | 60 | 90 | 209 | 170 | 3,15 | 86,5 | 7650 | 20000 |

Verkrijgbaar in:

| | |
|----------|------------------------|
| KBL-d-PP | dubbelzijdig afgedicht |
| KBL-d | zonder afdichting |

SERIE KBK



Materiaal: Chromstaal

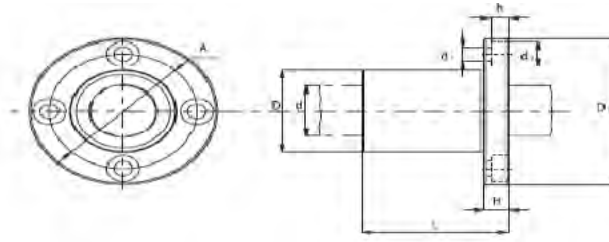
| Artikel | Code | Aantal kogel rijen | d | D | L | D1 | G | H | A | Draaggetallen kN | |
|-------------|----------|--------------------|----|----|-----|-----|-----|----|-----|------------------|---------------|
| | | | | | | | | | | Dynamisch (Cr) | Statisch (Co) |
| KBK 08 (PP) | 25510008 | 4 | 8 | 16 | 25 | 32 | 25 | 5 | 24 | 270 | 410 |
| KBK 12 (PP) | 25510012 | 4 | 12 | 22 | 32 | 42 | 32 | 6 | 32 | 520 | 790 |
| KBK 16 (PP) | 25510016 | 5 | 16 | 26 | 36 | 46 | 35 | 6 | 36 | 590 | 910 |
| KBK 20 (PP) | 25510020 | 5 | 20 | 32 | 45 | 54 | 42 | 8 | 43 | 880 | 1400 |
| KBK 25 (PP) | 25510025 | 6 | 25 | 40 | 58 | 62 | 50 | 8 | 51 | 1000 | 1600 |
| KBK 30 (PP) | 25510030 | 6 | 30 | 47 | 68 | 76 | 60 | 10 | 62 | 1600 | 2800 |
| KBK 40 (PP) | 25510040 | 6 | 40 | 62 | 80 | 98 | 75 | 13 | 80 | 2200 | 4100 |
| KBK 50 (PP) | 25510050 | 6 | 50 | 75 | 100 | 112 | 88 | 13 | 94 | 3900 | 8100 |
| KBK 60 (PP) | 25510060 | 6 | 60 | 90 | 125 | 134 | 106 | 18 | 112 | 4800 | 10200 |

Verkrijgbaar in:

| | |
|----------|--------------------------|
| KBK-d-PP | dubbelzijdige afdichting |
| KBK-d | zonder afdichting |

LINEAIRE LAGER FLENS

SERIE KBF



Materiaal: Chroomstaal

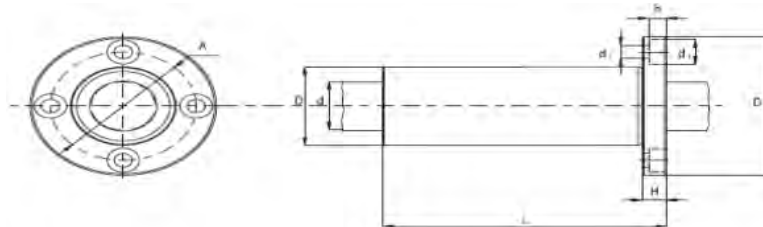
| Artikel | Code | Aantal kogel rijen | d | D | L | D1 | H | A | Draaggetallen kN | |
|-------------|----------|--------------------|----|----|-----|-----|----|-----|------------------|---------------|
| | | | | | | | | | Dynamisch (Cr) | Statisch (Co) |
| KBF 08 (PP) | 25520008 | 4 | 8 | 16 | 25 | 32 | 5 | 24 | 270 | 410 |
| KBF 12 (PP) | 25520012 | 4 | 12 | 22 | 32 | 42 | 6 | 32 | 520 | 790 |
| KBF 16 (PP) | 25520016 | 5 | 16 | 26 | 36 | 46 | 6 | 36 | 590 | 910 |
| KBF 20 (PP) | 25520020 | 5 | 20 | 32 | 45 | 54 | 8 | 43 | 880 | 1400 |
| KBF 25 (PP) | 25520025 | 6 | 25 | 40 | 58 | 62 | 8 | 51 | 1000 | 1600 |
| KBF 30 (PP) | 25520030 | 6 | 30 | 47 | 68 | 76 | 10 | 62 | 1600 | 2800 |
| KBF 40 (PP) | 25520040 | 6 | 40 | 62 | 80 | 98 | 13 | 80 | 2200 | 4100 |
| KBF 50 (PP) | 25520050 | 6 | 50 | 75 | 100 | 112 | 13 | 94 | 3900 | 8100 |
| KBF 60 (PP) | 25520060 | 6 | 60 | 90 | 125 | 134 | 18 | 112 | 4800 | 10200 |

Verkrijgbaar in:

KBF-d-PP dubbelzijdig afgedicht

KBF-d zonder afdichting

SERIE KBFL



Materiaal: Chroomstaal

| Artikel | Code | Aantal kogel rijen | d | D | L | D1 | H | A | Draaggetallen kN | |
|--------------|----------|--------------------|----|----|-----|-----|----|-----|------------------|---------------|
| | | | | | | | | | Dynamisch (Cr) | Statisch (Co) |
| KBFL 08 (PP) | 25530008 | 4 | 8 | 16 | 45 | 32 | 5 | 24 | 431 | 784 |
| KBFL 12 (PP) | 25530012 | 4 | 12 | 22 | 57 | 42 | 6 | 32 | 657 | 1200 |
| KBFL16 (PP) | 25530016 | 5 | 16 | 26 | 70 | 46 | 6 | 36 | 1230 | 2350 |
| KBFL 20 (PP) | 25530020 | 5 | 20 | 32 | 80 | 54 | 8 | 43 | 1400 | 2750 |
| KBFL 25 (PP) | 25530025 | 6 | 25 | 40 | 112 | 62 | 8 | 51 | 1560 | 3140 |
| KBFL 30 (PP) | 25530030 | 6 | 30 | 47 | 123 | 76 | 10 | 62 | 2490 | 5490 |
| KBFL 40 (PP) | 25530040 | 6 | 40 | 62 | 154 | 98 | 13 | 80 | 3430 | 8040 |
| KBFL 50 (PP) | 25530050 | 6 | 50 | 75 | 192 | 112 | 13 | 94 | 6080 | 15900 |
| KBFL 60 (PP) | 25530060 | 6 | 60 | 90 | 209 | 134 | 18 | 112 | 7650 | 20000 |

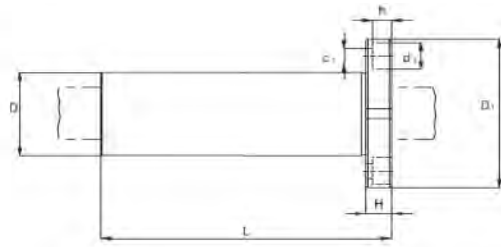
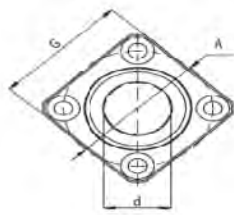
Verkrijgbaar in:

KBFL-d-PP dubbelzijdig afgedicht

KBFL-d zonder afdichting

LINEAIRE LAGERS

SERIE KBKL



Materiaal: Chromstaal

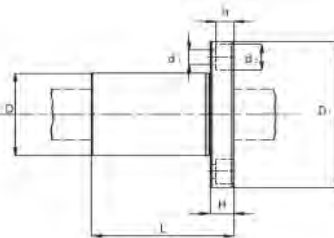
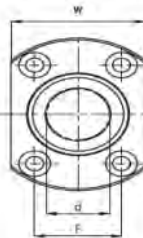
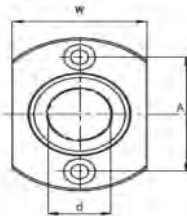


| Artikel | Code | Aantal kogel rijen | d | D | L | D1 | G | H | A | Draaggetallen kN | |
|--------------|----------|--------------------|----|----|-----|-----|-----|----|-----|------------------|---------------|
| | | | | | | | | | | Dynamisch (Cr) | Statisch (Co) |
| KBKL 08 (PP) | 25540008 | 4 | 8 | 16 | 45 | 32 | 25 | 5 | 24 | 431 | 784 |
| KBKL 12 (PP) | 25540012 | 4 | 12 | 22 | 57 | 42 | 32 | 6 | 32 | 657 | 1200 |
| KBKL 16 (PP) | 25540016 | 5 | 16 | 26 | 70 | 46 | 35 | 6 | 36 | 1230 | 2350 |
| KBKL 20 (PP) | 25540020 | 5 | 20 | 32 | 80 | 54 | 42 | 8 | 43 | 1400 | 2750 |
| KBKL 25 (PP) | 25540025 | 6 | 25 | 40 | 112 | 62 | 50 | 8 | 51 | 1560 | 3140 |
| KBKL 30 (PP) | 25540030 | 6 | 30 | 47 | 123 | 76 | 60 | 10 | 62 | 2490 | 5490 |
| KBKL 40 (PP) | 25540040 | 6 | 40 | 62 | 154 | 98 | 75 | 13 | 80 | 3430 | 8040 |
| KBKL 50 (PP) | 25540050 | 6 | 50 | 75 | 192 | 112 | 88 | 13 | 94 | 6080 | 15900 |
| KBKL 60 (PP) | 25540060 | 6 | 60 | 90 | 211 | 134 | 106 | 18 | 112 | 7650 | 20000 |

Verkrijgbaar in:

| | |
|-----------|------------------------|
| KBKL-d-PP | dubbelzijdig afgedicht |
| KBKL-d | zonder afdichting |

SERIE KBH



Materiaal: Chromstaal



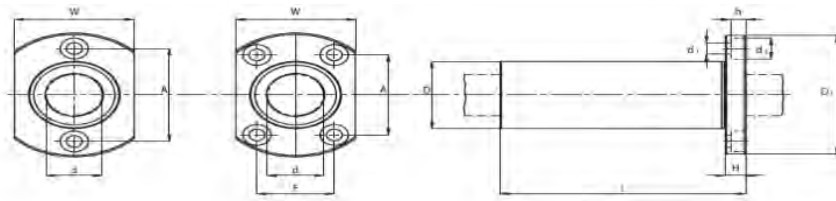
| Artikel | Code | Aantal kogel rijen | d | D | L | D1 | W | H | A | F | Draaggetallen kN | |
|-------------|----------|--------------------|----|----|----|----|----|----|----|----|------------------|---------------|
| | | | | | | | | | | | Dynamisch (Cr) | Statisch (Co) |
| KBH 06 (PP) | 25550006 | 4 | 6 | 12 | 19 | 28 | 18 | 5 | 20 | | 210 | 270 |
| KBH 08 (PP) | 25550008 | 4 | 8 | 15 | 24 | 32 | 21 | 5 | 24 | | 270 | 410 |
| KBH 10 (PP) | 25550010 | 4 | 10 | 19 | 29 | 40 | 25 | 6 | 29 | | 380 | 560 |
| KBH 12 (PP) | 25550012 | 4 | 12 | 21 | 30 | 42 | 27 | 6 | 32 | | 420 | 610 |
| KBH 13 (PP) | 25550013 | 4 | 13 | 23 | 32 | 43 | 29 | 6 | 33 | | 520 | 790 |
| KBH 16 (PP) | 25550016 | 5 | 16 | 28 | 37 | 48 | 34 | 6 | 31 | 22 | 790 | 1200 |
| KBH 20 (PP) | 25550020 | 5 | 20 | 32 | 42 | 54 | 38 | 8 | 36 | 24 | 880 | 1400 |
| KBH 25 (PP) | 25550025 | 6 | 25 | 40 | 59 | 62 | 46 | 8 | 40 | 32 | 1000 | 1600 |
| KBH 30 (PP) | 25550030 | 6 | 30 | 45 | 64 | 74 | 51 | 10 | 49 | 35 | 1600 | 2800 |

Verkrijgbaar in:

| | |
|----------|------------------------|
| KBH-d-PP | dubbelzijdig afgedicht |
| KBH-d | zonder afdichting |

LINEAIRE LAGERS

SERIE KBHL



Materiaal: Chromstaal



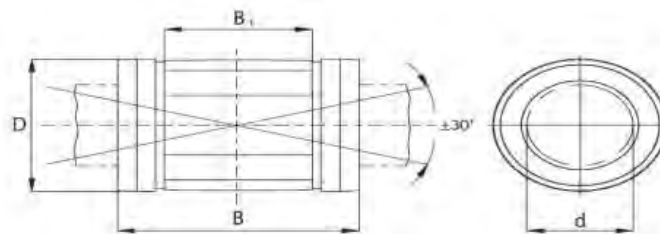
| Artikel | Code | Aantal kogel rijen | d | D | L | D1 | W | H | A | F | Draaggetallen kN | |
|--------------|----------|--------------------|----|----|-----|----|----|----|----|----|------------------|---------------|
| | | | | | | | | | | | Dynamisch (Cr) | Statisch (Co) |
| KBHL 06 (PP) | 25560006 | 4 | 6 | 12 | 35 | 28 | 18 | 5 | 20 | | 330 | 540 |
| KBHL 08 (PP) | 25560008 | 4 | 8 | 15 | 45 | 32 | 21 | 5 | 24 | | 440 | 800 |
| KBHL 10 (PP) | 25560010 | 4 | 10 | 19 | 55 | 40 | 25 | 6 | 29 | | 600 | 1120 |
| KBHL 12 (PP) | 25560012 | 4 | 12 | 21 | 57 | 42 | 27 | 6 | 32 | | 670 | 1220 |
| KBHL 13 (PP) | 25560013 | 4 | 13 | 23 | 61 | 43 | 29 | 6 | 33 | | 830 | 1600 |
| KBHL 16 (PP) | 25560016 | 5 | 16 | 28 | 70 | 48 | 34 | 6 | 31 | 22 | 1250 | 2400 |
| KBHL 20 (PP) | 25560020 | 5 | 20 | 32 | 80 | 54 | 38 | 8 | 36 | 24 | 1430 | 2800 |
| KBHL 25 (PP) | 25560025 | 6 | 25 | 40 | 112 | 62 | 46 | 8 | 40 | 32 | 1590 | 3200 |
| KBHL 30 (PP) | 25560030 | 6 | 30 | 45 | 123 | 74 | 51 | 10 | 49 | 35 | 2540 | 5600 |

Verkrijgbaar in:

KBHL-d-PP dubbelzijdige afdekking

KBHL-d-PP zonder afdichting

SERIE KN



Materiaal: Chromstaal



| Artikel | Code | Aantal kogel rijen | d | D | B | B1 | Draaggetallen kN | |
|----------------|----------|--------------------|----|----|-----|----|------------------|---------------|
| | | | | | | | Dynamisch (Cr) | Statisch (Co) |
| KN 12 32 (PP) | 25612321 | 5 | 12 | 22 | 32 | 20 | 650 | 520 |
| KN 16 36 (PP) | 25616361 | 5 | 16 | 26 | 36 | 22 | 800 | 630 |
| KN 20 45 (PP) | 25620451 | 6 | 20 | 32 | 45 | 28 | 1500 | 1250 |
| KN 25 58 (PP) | 25625451 | 6 | 25 | 40 | 58 | 40 | 2500 | 2200 |
| KN 30 68 (PP) | 25630681 | 6 | 30 | 47 | 68 | 48 | 3200 | 2800 |
| KN 40 80 (PP) | 25640801 | 6 | 40 | 62 | 80 | 56 | 5500 | 4900 |
| KN 50 100 (PP) | 25650100 | 6 | 50 | 75 | 100 | 72 | 8600 | 7100 |

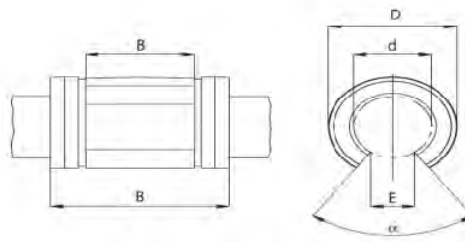
Verkrijgbaar in:

KN-d-PP dubbelzijdig afgedicht

KN-d-PP zonder afdichting

LINEAIRE LAGERS

SERIE KNO



Materiaal: Chromstaal



| Artikel | Code | Aantal kogel rijen | d | D | B | B1 | E | a | Draaggetallen kN | |
|-----------------|----------|--------------------|----|----|-----|----|-------|-----|------------------|---------------|
| | | | | | | | | | Dynamisch (Cr) | Statisch (Co) |
| KN 012 32 (PP) | 25712321 | 4 | 12 | 22 | 32 | 20 | 6,5 | 66° | 650 | 520 |
| KNO 16 36 (PP) | 25716361 | 4 | 16 | 26 | 36 | 22 | 9 | 68° | 800 | 630 |
| KNO 20 45 (PP) | 25720451 | 5 | 20 | 32 | 45 | 28 | 9 | 55° | 1500 | 1250 |
| KNO 25 58 (PP) | 25725451 | 5 | 25 | 40 | 58 | 40 | 110,5 | 57° | 2500 | 2200 |
| KNO 30 68 (PP) | 25730681 | 5 | 30 | 47 | 68 | 48 | 14 | 57° | 3200 | 2800 |
| KNO 40 80 (PP) | 25740801 | 5 | 40 | 62 | 80 | 56 | 19,5 | 56° | 5500 | 4900 |
| KNO 50 100 (PP) | 25750100 | 5 | 50 | 75 | 100 | 72 | 22,5 | 54° | 8600 | 7100 |

Verkrijgbaar in:

| | |
|----------|------------------------|
| KNO-d-PP | dubbelzijdig afgedicht |
| KNO-d | zonder afdichting |