

# PLAATSTALEN DRIEPUNTS FLENSLAGERBLOKKEN PRESSED HOUSING THREE BOLT FLANGE UNITS

Plaatstalen lagerblokken / SBPFT201 - SBPFT207 & SAPFT201 - SAPFT207

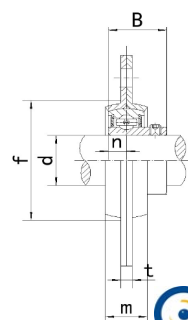
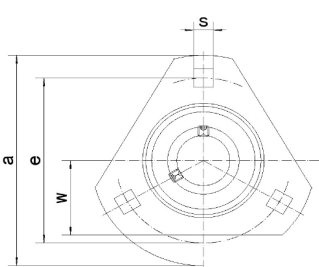
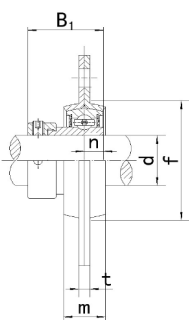
**SBPFT**  
met stelbout

**SAPFT**

met excentrische klemring



SAPFT



SBPFT



Type	Code	Afmetingen (mm / in.)										Bout mm/in.	Lagertype	Huis	Gewicht (kg)
		d	a	e	b	m	S	t	f (min)	B	n				
SBPFT 201	240201003	12	81	63,5	28,5	14	7,1	4	49	28,6	6,5	M6	SA201	PFT203	0,26
201-8	-	1/2	3-3/16	2-1/2	1-1/8	9/16	9/32	0.157	1-59/64	1.1260	0.2559	1/4	SA201-8		
SBPFT 202	240202003	15	81	63,5	28,5	14	7,1	4	49	28,6	6,5	M6	SA202	PFT203	0,26
202-9	-	9/16	3-3/16	2-1/2	1-1/8	9/16	9/32	0.157	1-59/64	1.1260	0.2559	1/4	SA202-9		
202-10	-	5/8											SA202-10		
SBPFT 203	240203003	17	81	63,5	28,5	14	7,1	4	49	28,6	6,5	M6	SA203	PFT203	0,26
203-11	-	11/16	3-3/16	2-1/2	1-1/8	9/16	9/32	0.157	1-59/64	1.1260	0.2559	1/4	SA203-11		
SBPFT 204	240204003	20	90	71,5	33	16	9	4	56	31	7,5	M8	SA204	PFT204	0,28
204-12	-	3/4	3-35/64	2-13/16	1-19/64	5/8	23/64	0.157	2-13/64	1.2204	0.2953	5/16	SA204-12		
SBPFT 205	240205003	25	95	76	35	18	9	4	60	31	7,5	M8	SA205	PFT205	0,32
205-13	-	13/16											SA205-13		
205-14	-	7/8	3-3/4	2-63/64	1-3/8	23/32	23/64	0.157	2-23/64	1.2204	0.2953	5/16	SA205-14		
205-15	-	15/16											SA205-15		
205-16	-	1											SA205-16		
SBPFT 206	240206003	30	113	90,5	40	18	11	5,2	71	35,7	9	M10	SA206	PFT206	0,50
206-17	-	1-1/16											SA206-17		
206-18	-	1-1/8	4-7/16	3-9/16	1-37/64	23/32	7/16	0.205	2-51/64	1.4055	0.3543	3/8	SA206-18		
206-19	-	1-3/16											SA206-19		
206-20	-	1-1/4											SA206-20		
SBPFT 207	240207003	35	122	100	44,5	20	11	5,2	81	38,9	9,5	M10	SA207	PFT207	1,07
207-20	-	1-1/4											SA207-20		
207-21	-	1-5/16	4-13/16	3-15/16	1-3/4	25/32	7/16	0.205	3-3/16	1.5315	0.3740	3/8	SA207-21		
207-22	-	1-3/8											SA207-22		
207-23	-	1-7/16											SA207-23		

Type	Code	Afmetingen (mm / in.)										Bout mm/in.	Lagertype	Huis	Gewicht (kg)
		d	a	e	b	m	S	t	f (min)	B1	n				
SAPFT 201	-	12	81	63,5	28,5	14	7,1	4	49	22	6	M6	SB201	PFT203	0,23
201-8	-	1/2	3-3/16	2-1/2	1-1/8	9/16	9/32	0.157	1-59/64	0.8661	0.2362	1/4	SB201-8		
SAPFT 202	-	15	81	63,5	28,5	14	7,1	4	49	22	6	M6	SB202	PFT203	0,23
202-9	-	9/16	3-3/16	2-1/2	1-1/8	9/16	9/32	0.157	1-59/64	0.8661	0.2362	1/4	SB202-9		
202-10	-	5/8											SB202-10		
SAPFT 203	-	17	81	63,5	28,5	14	7,1	4	49	22	6	M6	SB203	PFT203	0,23
203-11	-	11/16	3-3/16	2-1/2	1-1/8	9/16	9/32	0.157	1-59/64	0.8661	0.2362	1/4	SB203-11		
SAPFT 204	-	20	90	71,5	33	16	9	4	56	25	7	M8	SB204	PFT204	0,24
204-12	-	3/4	3-35/64	2-13/16	1-19/64	5/8	23/64	0.157	2-13/64	0.9843	0.2756	5/16	SB204-12		
SAPFT 205	-	25	95	76	35	18	9	4	60	27	7,5	M8	SB205	PFT205	0,28
205-13	-	13/16											SB205-13		
205-14	-	7/8	3-3/4	2-63/64	1-3/8	23/32	23/64	0.157	2-23/64	1.0630	0.2953	5/16	SB205-14		
205-15	-	15/16											SB205-15		
205-16	-	1											SB205-16		
SAPFT 206	-	30	113	90,5	40	18	11	5,2	71	30	8	M10	SB206	PFT206	0,44
206-17	-	1-1/16											SB206-17		
206-18	-	1-1/8	4-7/16	3-9/16	1-37/64	23/32	7/16	0.205	2-51/64	1.1811	0.3150	3/8	SB206-18		
206-19	-	1-3/16											SB206-19		
206-20	-	1-1/4											SB206-20		
SAPFT 207	-	35	122	100	44,5	20	11	5,2	81	32	8,5	M10	SB207	PFT207	0,58
207-20	-	1-1/4											SB207-20		
207-21	-	1-5/16	4-13/16	3-15/16	1-3/4	25/32	7/16	0.205	3-3/16	1.2598	0.3346	3/8	SB207-21		
207-22	-	1-3/8											SB207-22		
207-23	-	1-7/16											SB207-23		