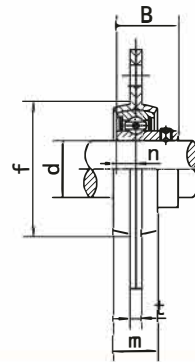
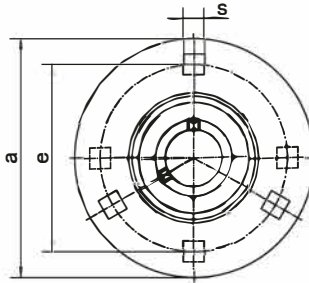
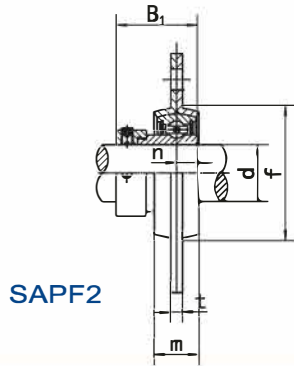


**Ball Bearing Units**
**SAPF2**  
 (SA2-Fitted)

**Pressed Housing Flange Units**  
 (Light duty)

**SBPF2**  
 (SB2-Fitted)

SWG 35



SAPF2

SBPF2

Unit NO.	Dimensions ( mm / in. )										Bolt Size mm/in.	Bearing No.	Housing No.	Weight (kg)
	d	a	e	m	s <sup>1)</sup>	t	f	B <sub>1</sub>	n					
SAPF 201 201-8	1/2	81	63.5	14.0	7.1	4.0	49	28.6	6.5	M6	SA201	PF204	0.30	
SAPF 202 202-9	15	3-3/16	2-1/2	9/16	9/32	0.157	1-59/64	1.1260	0.2559		1/4			SA201-8
SAPF 203 203-11	17													SA202-9
SAPF 204 204-12	20	90	71.5	16.0	9.0	4.0	56	31	7.5	M8	SA203-11	PF204	0.33	
SAPF 205 205-13	25	95	76.0	18.0	9.0	4.0	60	31	7.5	5/16	SA204	PF205		
SAPF 206 206-17	30	113	90.5	18.0	11.0	5.2	71	35.7	9	M10	SA205-13			
SAPF 207 207-20	35	122	100.0	20.0	11.0	5.2	81	38.9	9.5	M10	SA205-14		PF206	0.60
SAPF 208 208-24	40	148	119.0	21.0	13.5	6.8	91	43.7	11	M12	SA206-18	PF207		
SAPF 209 209-26	45	150	120.5	23.0	13.5	6.8	98	43.7	11	M12	SA206-19			
SAPF 210 210-29	50	157	127.0	25.0	13.5	8.0	102	43.7	11	M12	SA206-20		PF208	1.30
SAPF 211 211-32	55	168	138.0	26.0	13.5	8.0	113	48.4	12	M12	SA209	PF209		
SAPF 212 212-36	60	177	148.0	28.0	13.5	8.0	122	53.1	13.5	M12	SA209-26			
SAPF 213 213-38	2	6-3/16	5	63/64	17/32	0.315	4-1/64	1.7205	0.433	1/2	SA209-27		PF210	1.59
SAPF 214 214-42	2	6-3/16	5	63/64	17/32	0.315	4-1/64	1.7205	0.433	1/2	SA209-28	PF211		
SAPF 215 215-48	2	6-3/16	5	63/64	17/32	0.315	4-1/64	1.7205	0.433	1/2	SA210-29			
SAPF 216 216-54	2	6-3/16	5	63/64	17/32	0.315	4-1/64	1.7205	0.433	1/2	SA210-30		PF212	2.41
SAPF 217 217-60	2	6-3/16	5	63/64	17/32	0.315	4-1/64	1.7205	0.433	1/2	SA210-31	PF213		
SAPF 218 218-66	2	6-3/16	5	63/64	17/32	0.315	4-1/64	1.7205	0.433	1/2	SA210-32			
SAPF 219 219-72	2	6-3/16	5	63/64	17/32	0.315	4-1/64	1.7205	0.433	1/2	SA211-32		PF214	1.95
SAPF 220 220-78	2	6-3/16	5	63/64	17/32	0.315	4-1/64	1.7205	0.433	1/2	SA211-33	PF215		
SAPF 221 221-84	2	6-3/16	5	63/64	17/32	0.315	4-1/64	1.7205	0.433	1/2	SA211-34			
SAPF 222 222-90	2	6-3/16	5	63/64	17/32	0.315	4-1/64	1.7205	0.433	1/2	SA211-35		PF216	1.95
SAPF 223 223-96	2	6-3/16	5	63/64	17/32	0.315	4-1/64	1.7205	0.433	1/2	SA212	PF217		
SAPF 224 224-102	2	6-3/16	5	63/64	17/32	0.315	4-1/64	1.7205	0.433	1/2	SA212-36			
SAPF 225 225-108	2	6-3/16	5	63/64	17/32	0.315	4-1/64	1.7205	0.433	1/2	SA212-37		PF218	2.41
SAPF 226 226-114	2	6-3/16	5	63/64	17/32	0.315	4-1/64	1.7205	0.433	1/2	SA212-38	PF219		
SAPF 227 227-120	2	6-3/16	5	63/64	17/32	0.315	4-1/64	1.7205	0.433	1/2	SA212-39			
SAPF 228 228-126	2	6-3/16	5	63/64	17/32	0.315	4-1/64	1.7205	0.433	1/2	SA212-39		PF220	2.41
SAPF 229 229-132	2	6-3/16	5	63/64	17/32	0.315	4-1/64	1.7205	0.433	1/2	SA212-39	PF221		
SAPF 230 230-138	2	6-3/16	5	63/64	17/32	0.315	4-1/64	1.7205	0.433	1/2	SA212-39			
SAPF 231 231-144	2	6-3/16	5	63/64	17/32	0.315	4-1/64	1.7205	0.433	1/2	SA212-39		PF222	2.41
SAPF 232 232-150	2	6-3/16	5	63/64	17/32	0.315	4-1/64	1.7205	0.433	1/2	SA212-39	PF223		
SAPF 233 233-156	2	6-3/16	5	63/64	17/32	0.315	4-1/64	1.7205	0.433	1/2	SA212-39			
SAPF 234 234-162	2	6-3/16	5	63/64	17/32	0.315	4-1/64	1.7205	0.433	1/2	SA212-39		PF224	2.41
SAPF 235 235-168	2	6-3/16	5	63/64	17/32	0.315	4-1/64	1.7205	0.433	1/2	SA212-39	PF225		
SAPF 236 236-174	2	6-3/16	5	63/64	17/32	0.315	4-1/64	1.7205	0.433	1/2	SA212-39			
SAPF 237 237-180	2	6-3/16	5	63/64	17/32	0.315	4-1/64	1.7205	0.433	1/2	SA212-39		PF226	2.41
SAPF 238 238-186	2	6-3/16	5	63/64	17/32	0.315	4-1/64	1.7205	0.433	1/2	SA212-39	PF227		
SAPF 239 239-192	2	6-3/16	5	63/64	17/32	0.315	4-1/64	1.7205	0.433	1/2	SA212-39			
SAPF 240 240-198	2	6-3/16	5	63/64	17/32	0.315	4-1/64	1.7205	0.433	1/2	SA212-39		PF228	2.41
SAPF 241 241-204	2	6-3/16	5	63/64	17/32	0.315	4-1/64	1.7205	0.433	1/2	SA212-39	PF229		
SAPF 242 242-210	2	6-3/16	5	63/64	17/32	0.315	4-1/64	1.7205	0.433	1/2	SA212-39			
SAPF 243 243-216	2	6-3/16	5	63/64	17/32	0.315	4-1/64	1.7205	0.433	1/2	SA212-39		PF230	2.41
SAPF 244 244-222	2	6-3/16	5	63/64	17/32	0.315	4-1/64	1.7205	0.433	1/2	SA212-39	PF231		
SAPF 245 245-228	2	6-3/16	5	63/64	17/32	0.315	4-1/64	1.7205	0.433	1/2	SA212-39			
SAPF 246 246-234	2	6-3/16	5	63/64	17/32	0.315	4-1/64	1.7205	0.433	1/2	SA212-39		PF232	2.41
SAPF 247 247-240	2	6-3/16	5	63/64	17/32	0.315	4-1/64	1.7205	0.433	1/2	SA212-39	PF233		
SAPF 248 248-246	2	6-3/16	5	63/64	17/32	0.315	4-1/64	1.7205	0.433	1/2	SA212-39			
SAPF 249 249-252	2	6-3/16	5	63/64	17/32	0.315	4-1/64	1.7205	0.433	1/2	SA212-39		PF234	2.41
SAPF 250 250-258	2	6-3/16	5	63/64	17/32	0.315	4-1/64	1.7205	0.433	1/2	SA212-39	PF235		
SAPF 251 251-264	2	6-3/16	5	63/64	17/32	0.315	4-1/64	1.7205	0.433	1/2	SA212-39			
SAPF 252 252-270	2	6-3/16	5	63/64	17/32	0.315	4-1/64	1.7205	0.433	1/2	SA212-39		PF236	2.41
SAPF 253 253-276	2	6-3/16	5	63/64	17/32	0.315	4-1/64	1.7205	0.433	1/2	SA212-39	PF237		
SAPF 254 254-282	2	6-3/16	5	63/64	17/32	0.315	4-1/64	1.7205	0.433	1/2	SA212-39			
SAPF 255 255-288	2	6-3/16	5	63/64	17/32	0.315	4-1/64	1.7205	0.433	1/2	SA212-39		PF238	2.41
SAPF 256 256-294	2	6-3/16	5	63/64	17/32	0.315	4-1/64	1.7205	0.433	1/2	SA212-39	PF239		
SAPF 257 257-300	2	6-3/16	5	63/64	17/32	0.315	4-1/64	1.7205	0.433	1/2	SA212-39			
SAPF 258 258-306	2	6-3/16	5	63/64	17/32	0.315	4-1/64	1.7205	0.433	1/2	SA212-39		PF240	2.41
SAPF 259 259-312	2	6-3/16	5	63/64	17/32	0.315	4-1/64	1.7205	0.433	1/2	SA212-39	PF241		
SAPF 260 260-318	2	6-3/16	5	63/64	17/32	0.315	4-1/64	1.7205	0.433	1/2	SA212-39			
SAPF 261 261-324	2	6-3/16	5	63/64	17/32	0.315	4-1/64	1.7205	0.433	1/2	SA212-39		PF242	2.41
SAPF 262 262-330	2	6-3/16	5	63/64	17/32	0.315	4-1/64	1.7205	0.433	1/2	SA212-39	PF243		
SAPF 263 263-336	2	6-3/16	5	63/64	17/32	0.315	4-1/64	1.7205	0.433	1/2	SA212-39			
SAPF 264 264-342	2	6-3/16	5	63/64	17/32	0.315	4-1/64	1.7205	0.433	1/2	SA212-39		PF244	2.41
SAPF 265 265-348	2	6-3/16	5	63/64	17/32	0.315	4-1/64	1.7205	0.433	1/2	SA212-39	PF245		
SAPF 266 266-354	2	6-3/16	5	63/64	17/32	0.315	4-1/64	1.7205	0.433	1/2	SA212-39			
SAPF 267 267-360	2	6-3/16	5	63/64	17/32	0.315	4-1/64	1.7205	0.433	1/2	SA212-39		PF246	2.41
SAPF 268 268-366	2	6-3/16	5	63/64	17/32	0.315	4-1/64	1.7205	0.433	1/2	SA212-39	PF247		
SAPF 269 269-372	2	6-3/16	5	63/64	17/32	0.315	4-1/64	1.7205	0.433	1/2	SA212-39			
SAPF 270 270-378	2	6-3/16	5	63/64	17/32	0.315	4-1/64	1.7205	0.433	1/2	SA212-39		PF248	2.41
SAPF 271 271-384	2	6-3/16	5	63/64	17/32	0.315	4-1/64	1.7205	0.433	1/2	SA212-39	PF249		
SAPF 272 272-390	2	6-3/16	5	63/64	17/32	0.315	4-1/64	1.7205	0.433	1/2	SA212-39			
SAPF 273 273-396	2	6-3/16	5	63/64	17/32	0.315	4-1/64	1.7205	0.433	1/2	SA212-39		PF250	2.41
SAPF 274 274-402	2	6-3/16	5	63/64	17/32	0.315	4-1/64	1.7205	0.433	1/2	SA212-39	PF251		
SAPF 275 275-408	2	6-3/16	5	63/64	17/32	0.315	4-1/64	1.7205	0.433	1/2	SA212-39			
SAPF 276 276-414	2	6-3/16	5	63/64	17/32	0.315	4-1/64	1.7205	0.433	1/2				