

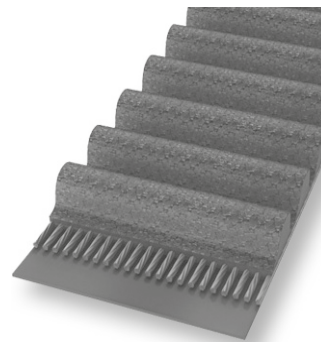
# TANDRIEMEN "HTD"

## "HTD" TIMING BELTS

3M, 5M, 8M, 14M

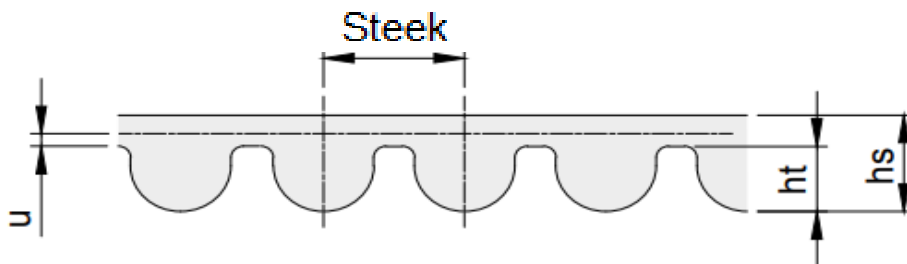
### Eigenschappen

- Temperatuurbereik van -20° C tot 100° C afhankelijk van functie
- Resistent tegen olie
- Ozon-resistent
- Geschikt voor tropisch klimaat
- Resistent tegen veroudering
- Onderhoudsvrij



### Properties

- Temperature range from -20 °C to 100 °C depending on application
- Conditionally resistant to oil
- Ozone-resistant
- Suitable for tropical climates
- Resistant to aging
- Maintenance-free



### Maatvoering tandriem

Type	<i>mm</i> Steek	<i>mm</i> hs	<i>mm</i> ht	<i>mm</i> u
HTD 3M	3,00	2,40	1,20	0,380
HTD 5M	5,00	3,60	2,10	0,570
HTD 8M	8,00	5,60	3,40	0,686
HTD 14M	14,00	10,00	6,00	1,395

# TANDRIEMEN "HTD"

## "HTD" TIMING BELTS

3M06, 3M09, 3M15

**HTD 3M**  
STEEL 3 mm



Materiaal: neopreen

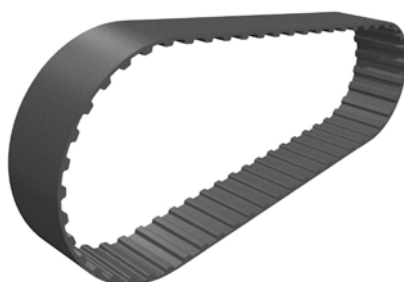
Type	Tanden	mm		Code HTD 3	
		Lengte	Breedte 6 mm	Breedte 9 mm	Breedte 15 mm
111 3M	37	111	7103060111	7103090111	7103150111
117 3M	39	117	7103060117	7103090117	7103150117
129 3M	43	129	7103060129	7103090129	7103150129
141 3M	47	141	7103060141	7103090141	7103150141
144 3M	48	144	7103060144	7103090144	7103150144
150 3M	50	150	7103060150	7103090150	7103150150
156 3M	52	156	7103060156	7103090156	7103150156
159 3M	53	159	7103060159	7103090159	7103150159
165 3M	55	165	7103060165	7103090165	7103150165
168 3M	56	168	7103060168	7103090168	7103150168
174 3M	58	174	7103060174	7103090174	7103150174
177 3M	59	177	7103060177	7103090177	7103150177
180 3M	60	180	7103060180	7103090180	7103150180
186 3M	62	186	7103060186	7103090186	7103150186
192 3M	64	192	7103060192	7103090192	7103150192
195 3M	65	195	7103060195	7103090195	7103150195
201 3M	67	201	7103060201	7103090201	7103150201
204 3M	68	204	7103060204	7103090204	7103150204
210 3M	70	210	7103060210	7103090210	7103150210
213 3M	71	213	7103060213	7103090213	7103150213
216 3M	72	216	7103060216	7103090216	7103150216
225 3M	75	225	7103060225	7103090225	7103150225
240 3M	80	240	7103060240	7103090240	7103150240
246 3M	82	246	7103060246	7103090246	7103150246
252 3M	84	252	7103060252	7103090252	7103150252
255 3M	85	255	7103060255	7103090255	7103150255
267 3M	89	267	7103060267	7103090267	7103150267
276 3M	92	276	7103060276	7103090276	7103150276
282 3M	94	282	7103060282	7103090282	7103150282
285 3M	95	285	7103060285	7103090285	7103150285
288 3M	96	288	7103060288	7103090288	7103150288
291 3M	97	291	7103060291	7103090291	7103150291
294 3M	98	294	7103060294	7103090294	7103150294
300 3M	100	300	7103060300	7103090300	7103150300
312 3M	104	312	7103060312	7103090312	7103150312
318 3M	106	318	7103060318	7103090318	7103150318
330 3M	110	330	7103060330	7103090330	7103150330
333 3M	111	333	7103060333	7103090333	7103150333
336 3M	112	336	7103060336	7103090336	7103150336
339 3M	113	339	7103060339	7103090339	7103150339
357 3M	119	357	7103060357	7103090356	7103150357
363 3M	121	363	7103060363	7103090363	7103150363
384 3M	128	384	7103060384	7103090384	7103150384
390 3M	130	390	7103060390	7103090390	7103150390
393 3M	131	393	7103060393	7103090393	7103150393
420 3M	140	420	7103060420	7103090420	7103150420
435 3M	145	435	7103060435	7103090435	7103150435
447 3M	149	447	7103060447	7103090447	7103150447

# TANDRIEMEN "HTD"

## "HTD" TIMING BELTS

3M06, 3M09, 3M15

**HTD 3M**  
STEEK 3 mm



Materiaal: neopreen

Type	Tanden	mm		Code HTD 3	
		Lengte	Breedte 6 mm	Breedte 9 mm	Breedte 15 mm
462 3M	154	462	7103060462	7103090462	7103150462
474 3M	158	474	7103060474	7103090474	7103150474
477 3M	159	477	7103060477	7103090477	7103150477
480 3M	160	480	7103060480	7103090480	7103150480
486 3M	162	486	7103060486	7103090486	7103150486
489 3M	163	489	7103060489	7103090489	7103150489
495 3M	165	495	7103060495	7103090495	7103150495
501 3M	167	501	7103060501	7103090501	7103150501
513 3M	171	513	7103060513	7103090513	7103150513
522 3M	174	522	7103060522	7103090522	7103150522
525 3M	175	525	7103060525	7103090525	7103150525
537 3M	179	537	7103060537	7103090537	7103150537
564 3M	188	564	7103060564	7103090564	7103150564
570 3M	190	570	7103060570	7103090570	7103150570
597 3M	199	597	7103060597	7103090597	7103150597
600 3M	200	600	7103060600	7103090600	7103150600
606 3M	202	606	7103060606	7103090606	7103150606
612 3M	204	612	7103060612	7103090612	7103150612
633 3M	211	633	7103060633	7103090633	7103150633
669 3M	223	669	7103060669	7103090669	7103150669
708 3M	236	708	7103060708	7103090708	7103150708
711 3M	237	711	7103060711	7103090711	7103150711
738 3M	246	738	7103060738	7103090738	7103150738
753 3M	251	753	7103060753	7103090753	7103150753
804 3M	268	804	7103060804	7103090804	7103150804
822 3M	274	822	7103060822	7103090822	7103150822
843 3M	281	843	7103060843	7103090843	7103150843
882 3M	294	882	7103060882	7103090882	7103150882
945 3M	315	945	7103060945	7103090945	7103150945
960 3M	320	960	7103060960	7103090960	7103150960
1002 3M	334	1002	7103061002	7103091002	7103151002
1041 3M	347	1041	7103061041	7103091041	7103151041
1068 3M	356	1068	7103061068	7103091068	7103151068
1071 3M	357	1071	7103061071	7103091071	7103151071
1125 3M	375	1125	7103061125	7103091125	7103151125
1176 3M	392	1176	7103061176	7103091176	7103151176
1245 3M	415	1245	7103061245	7103091245	7103151245
1500 3M	500	1500	7103061500	7103091500	7103151500
1569 3M	523	1569	7103061569	7103091569	7103151569

# TANDRIEMEN "HTD"

## "HTD" TIMING BELTS

5M09, 5M15, 5M25

**HTD 5M**  
STEEL 5 mm



Materiaal: neopreen

Type	Tanden	mm		Code HTD 5	
		Lengte	Breedte 9 mm	Breedte 15 mm	Breedte 25 mm
225 5M	45	225	7105090225	7105150225	7105250225
265 5M	53	265	7105090265	7105150265	7105250265
275 5M	55	275	7105090275	7105150275	7105250275
295 5M	59	295	7105090295	7105150295	7105250295
300 5M	60	300	7105090300	7105150300	7105250300
305 5M	61	305	7105090305	7105150305	7105250305
325 5M	65	325	7105090325	7105150325	7105250325
330 5M	66	330	7105090330	7105150330	7105250330
350 5M	70	350	7105090350	7105150350	7105250350
375 5M	75	375	7105090375	7105150375	7105250375
385 5M	77	385	7105090385	7105150385	7105250385
400 5M	80	400	7105090400	7105150400	7105250400
420 5M	84	420	7105090420	7105150420	7105250420
425 5M	85	425	7105090425	7105150425	7105250425
450 5M	90	450	7105090450	7105150450	7105250450
460 5M	92	460	7105090460	7105150460	7105250460
475 5M	95	475	7105090475	7105150475	7105250475
500 5M	100	500	7105090500	7105150500	7105250500
525 5M	105	525	7105090525	7105150525	7105250525
535 5M	107	535	7105090535	7105150535	7105250535
550 5M	110	550	7105090550	7105150550	7105250550
565 5M	113	565	7105090565	7105150565	7105250565
575 5M	115	575	7105090575	7105150575	7105250575
580 5M	116	580	7105090580	7105150580	7105250580
600 5M	120	600	7105090600	7105150600	7105250600
615 5M	123	615	7105090615	7105150615	7105250615
620 5M	124	620	7105090620	7105150620	7105250620
630 5M	126	630	7105090630	7105150630	7105250630
635 5M	127	635	7105090635	7105150635	7105250635
665 5M	133	665	7105090665	7105150665	7105250665
670 5M	134	670	7105090670	7105150670	7105250670
700 5M	140	700	7105090700	7105150700	7105250700
710 5M	142	710	7105090710	7105150710	7105250710
740 5M	148	740	7105090740	7105150740	7105250740
750 5M	150	750	7105090750	7105150750	7105250750
755 5M	151	755	7105090755	7105150755	7105250755
800 5M	160	800	7105090800	7105150800	7105250800
835 5M	167	835	7105090835	7105150835	7105250835
840 5M	168	840	7105090840	7105150840	7105250840
850 5M	170	850	7105090850	7105150850	7105250850
860 5M	172	860	7105090860	7105150860	7105250860
890 5M	178	890	7105090890	7105150890	7105250890
900 5M	180	900	7105090900	7105150900	7105250900
925 5M	185	925	7105090925	7105150925	7105250925
940 5M	188	940	7105090940	7105150940	7105250940
950 5M	190	950	7105090950	7105150950	7105250950

# TANDRIEMEN "HTD"

## "HTD" TIMING BELTS

5M09, 5M15, 5M25

**HTD 5M**  
STEEK 5 mm



Materiaal: neopreen

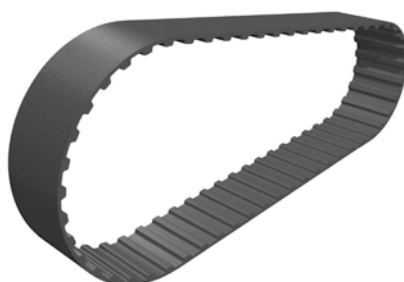
Type	Tanden	mm		Code HTD 5		
		Lengte	Breedte 9 mm	Breedte 15 mm	Breedte 25 mm	
<b>1000 5M</b>	200	1000	7105091000	7105151000	7105251000	
<b>1050 5M</b>	210	1050	7105091050	7105151050	7105251050	
<b>1125 5M</b>	225	1125	7105091125	7105151125	7105251125	
<b>1195 5M</b>	239	1195	7105091195	7105151195	7105251195	
<b>1200 5M</b>	240	1200	7105091200	7105151200	7105251200	
<b>1270 5M</b>	254	1270	7105091270	7105151270	7105251270	
<b>1300 5M</b>	260	1300	7105091300	7105151300	7105251300	
<b>1350 5M</b>	270	1350	7105091350	7105151350	7105251350	
<b>1420 5M</b>	284	1420	7105091420	7105151420	7105251420	
<b>1500 5M</b>	300	1500	7105091500	7105151500	7105251500	
<b>1595 5M</b>	319	1595	7105091595	7105151595	7105251595	
<b>1690 5M</b>	338	1690	7105091690	7105151690	7105251690	
<b>1790 5M</b>	358	1790	7105091790	7105151790	7105251790	
<b>1800 5M</b>	360	1800	7105091800	7105151800	7105251800	
<b>1895 5M</b>	379	1895	7105091895	7105151895	7105251895	
<b>2000 5M</b>	400	2000	7105092000	7105152000	7105252000	
<b>2525 5M</b>	505	2525	7105092525	7105152525	7105252525	

# TANDRIEMEN "HTD"

## "HTD" TIMING BELTS

8M20, 8M30, 8M50, 8M85

**HTD 8M**  
STEEL 8 mm



Materiaal: neopreen

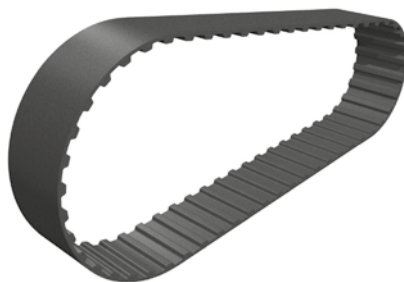
Type	Tanden	mm		Code HTD 8	Code HTD 8	Code HTD 8	Code HTD 8
		Lengte	Breedte 20 mm	Breedte 30 mm	Breedte 50 mm	Breedte 85 mm	
288 8M	36	288	7108200288	7108300288	7108500288	7108850288	
304 8M	38	304	7108200304	7108300304	7108500304	7108850304	
352 8M	44	352	7108200352	7108300352	7108500352	7108850352	
376 8M	47	376	7108200376	7108300376	7108500376	7108850376	
400 8M	50	400	7108200400	7108300400	7108500400	7108850400	
416 8M	52	416	7108200416	7108300416	7108500416	7108850416	
424 8M	53	424	7108200424	7108300424	7108500424	7108850424	
472 8M	59	472	7108200472	7108300472	7108500472	7108850472	
480 8M	60	480	7108200480	7108300480	7108500480	7108850480	
512 8M	64	512	7108200512	7108300512	7108500512	7108850512	
520 8M	65	520	7108200520	7108300520	7108500520	7108850520	
536 8M	67	536	7108200536	7108300536	7108500536	7108850536	
560 8M	70	560	7108200560	7108300560	7108500560	7108850560	
576 8M	72	576	7108200576	7108300576	7108500576	7108850576	
600 8M	75	600	7108200600	7108300600	7108500600	7108850600	
624 8M	78	624	7108200624	7108300624	7108500624	7108850624	
632 8M	79	632	7108200632	7108300632	7108500632	7108850632	
640 8M	80	640	7108200640	7108300640	7108500640	7108850640	
656 8M	82	656	7108200656	7108300656	7108500656	7108850656	
688 8M	86	688	7108200688	7108300688	7108500688	7108850688	
720 8M	90	720	7108200720	7108300720	7108500720	7108850720	
760 8M	95	760	7108200760	7108300760	7108500760	7108850760	
776 8M	97	776	7108200776	7108300776	7108500776	7108850776	
784 8M	98	784	7108200784	7108300784	7108500784	7108850784	
800 8M	100	800	7108200800	7108300800	7108500800	7108850800	
880 8M	110	880	7108200880	7108300880	7108500880	7108850880	
912 8M	114	912	7108200912	7108300912	7108500912	7108850912	
920 8M	115	920	7108200920	7108300920	7108500920	7108850920	
960 8M	120	960	7108200960	7108300960	7108500960	7108850960	
1000 8M	125	1000	7108201000	7108301000	7108501000	7108851000	
1016 8M	127	1016	7108201016	7108301016	7108501016	7108851016	
1040 8M	130	1040	7108201040	7108301040	7108501040	7108851040	
1064 8M	133	1064	7108201064	7108301064	7108501064	7108851064	
1080 8M	135	1080	7108201080	7108301080	7108501080	7108851080	
1120 8M	140	1120	7108201120	7108301120	7108501120	7108851120	
1152 8M	144	1152	7108201152	7108301152	7108501152	7108851152	
1160 8M	145	1160	7108201160	7108301160	7108501160	7108851160	
1172 8M	147	1172	7108201172	7108301176	7108501176	7108851176	
1200 8M	150	1200	7108201200	7108301200	7108501200	7108851200	
1224 8M	153	1224	7108201224	7108301224	7108501224	7108851224	
1256 8M	157	1256	7108201256	7108301256	7108501256	7108851256	
1280 8M	160	1280	7108201280	7108301280	7108501280	7108851280	
1304 8M	163	1304	7108201304	7108301304	7108501304	7108851304	
1328 8M	166	1328	7108201328	7108301328	7108501328	7108851328	
1360 8M	170	1360	7108201360	7108301360	7108501360	7108851360	
1392 8M	174	1392	7108201392	7108301392	7108501392	7108851392	

# TANDRIEMEN "HTD"

## "HTD" TIMING BELTS

8M20, 8M30, 8M50, 8M85

**HTD 8M**  
STEEK 8 mm



Materiaal: neopreen

Type	Tanden	mm		Code HTD 8		Code HTD 8	
		Lengte	Breedte 20 mm	Breedte 30 mm	Breedte 50 mm	Breedte 85 mm	
1424 8M	178	1424	7108201424	7108301424	7108501424	7108851424	
1440 8M	180	1440	7108201440	7108301440	7108501440	7108851440	
1520 8M	190	1520	7108201520	7108301520	7108501520	7108851520	
1552 8M	194	1552	7108201552	7108301552	7108501552	7108851552	
1600 8M	200	1600	7108201600	7108301600	7108501600	7108851600	
1696 8M	212	1696	7108201696	7108301696	7108501696	7108851696	
1760 8M	220	1760	7108201760	7108301760	7108501760	7108851760	
1800 8M	225	1800	7108201800	7108301800	7108501800	7108851800	
2000 8M	250	2000	7108202000	7108302000	7108502000	7108852000	
2240 8M	280	2240	7108202240	7108302240	7108502240	7108852240	
2248 8M	281	2248	7108202248	7108302248	7108502248	7108852248	
2400 8M	300	2400	7108202400	7108302400	7108502400	7108852400	
2600 8M	325	2600	7108202600	7108302600	7108502600	7108852600	
2800 8M	350	2800	7108202800	7108302800	7108502800	7108852800	
3008 8M	376	3008	7108203008	7108303008	7108503008	7108853008	
3048 8M	381	3048	7108203048	7108303048	7108503048	7108853048	
3280 8M	410	3280	7108203280	7108303280	7108503280	7108853280	
3408 8M	426	3408	7108203408	7108303408	7108503408	7108853408	
3600 8M	450	3600	7108203600	7108303600	7108503600	7108853600	
3808 8M	476	3808	7108203808	7108303808	7108503808	7108853808	
4400 8M	550	4400	7108204400	7108304400	7108504400	7108854400	



# TANDRIEMEN "HTD"

## "HTD" TIMING BELTS

14M40, 14M55, 14M85, 14M115, 14M170

**HTD 14M**  
STEEK 14 mm



Materiaal: neopreen

Type	Tanden	mm		Code HTD 14		Code HTD 14	
		Lengte	Brdte 40 mm	Brdte 55 mm	Brdte 85 mm	Brdte 115 mm	Brdte 170 mm
<b>966 14M</b>	69	966	7140400966	7140550966	7140850966	7141150966	7141700966
<b>1092 14M</b>	78	1092	7140401092	7140551092	7140851092	7141151092	7141701092
<b>1190 14M</b>	85	1190	7140401190	7140551190	7140851190	7141151190	7141701190
<b>1400 14M</b>	100	1400	7140401400	7140551400	7140851400	7141151400	7141701400
<b>1442 14M</b>	103	1442	7140401442	7140551442	7140851442	7141151442	7141701442
<b>1610 14M</b>	115	1610	7140401610	7140551610	7140851610	7141151610	7141701610
<b>1764 14M</b>	126	1764	7140401764	7140551764	7140851764	7141151764	7141701764
<b>1778 14M</b>	127	1778	7140401778	7140551778	7140851778	7141151778	7141701778
<b>1890 14M</b>	135	1890	7140401890	7140551890	7140851890	7141151890	7141701890
<b>2100 14M</b>	150	2100	7140402100	7140552100	7140852100	7141152100	7141702100
<b>2310 14M</b>	165	2310	7140402310	7140552310	7140852310	7141152310	7141702310
<b>2450 14M</b>	175	2450	7140402450	7140552450	7140852450	7141152450	7141702450
<b>2590 14M</b>	185	2590	7140402590	7140552590	7140852590	7141152590	7141702590
<b>2800 14M</b>	200	2800	7140402800	7140552800	7140852800	7141152800	7141702800
<b>3150 14M</b>	225	3150	7140403150	7140553150	7140853150	7141153150	7141703150
<b>3360 14M</b>	240	3360	7140403360	7140553360	7140853360	7141153360	7141703360
<b>3500 14M</b>	250	3500	7140403500	7140553500	7140853500	7141153500	7141703500
<b>3850 14M</b>	275	3850	7140403850	7140553850	7140853850	7141153850	7141703850
<b>4326 14M</b>	309	4326	7140404326	7140554326	7140854326	7141154326	7141704326
<b>4578 14M</b>	327	4578	7140404578	7140554578	7140854578	7141154578	7141704578



# METRISCHE TANDRIEMEN "T"

## METRIC BELTS "T"

T2,5, T5, T10 - DIN 7721-1

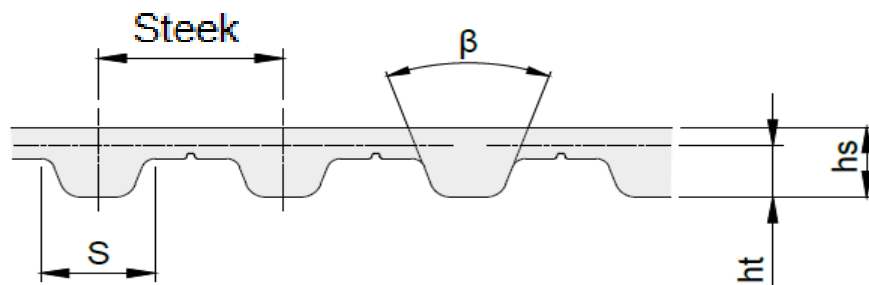
### Eigenschappen

- Temperatuurbereik van -30° C tot 80° C afhankelijk van functie
- Resistent tegen simpele olie, vet en brandstof
- Gelimiteerde resistentie tegen zuren en alkali
- Siliconenvrije materialen en productie
- Geschikt voor tropisch klimaat
- Resistent tegen veroudering
- Onderhoudsvrij
- Constance lengte
- Weinig geluidsoverlast
- Hoge flexibiliteit



### Properties

- Temperature range from -30 °C to 80 °C depending on application
- Resistant to simple oils, greases and fuel
- Limited resistance to acids and alkalies
- Silicone-free raw materials and production
- Suitable for tropical climates
- Resistant to aging
- Maintenance-free
- Constant length
- Low noise pollution
- High flexibility



### Maatvoering tandriem en tolerantie dikte

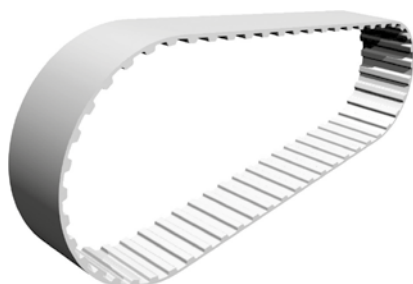
Type	Steek <i>mm</i>	hs <i>mm</i>	tol. <i>mm</i>	ht <i>mm</i>	S <i>mm</i>	β <i>mm</i>
T 2,5	2,5	1,3	± 0,15	0,7	1,50	40°
T 5	5	2,2	± 0,15	1,2	2,65	40°
T 10	10	4,5	± 0,30	2,5	5,30	40°

# METRISCHE TANDRIEMEN "T"

## METRIC BELTS "T"

T2,5 - DIN 7721-1

**T 2,5**  
STEEK 2,5 mm



Materiaal: polyurethaan



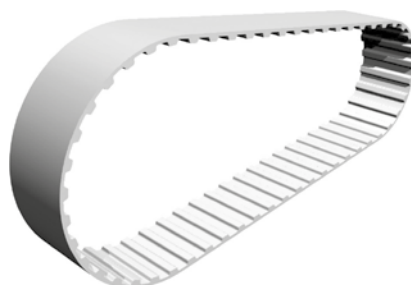
Type	Tanden	mm Lengte	Code T 2,5 Breedte 6 mm
T 2,5 120	48	120	7225060120
T 2,5 145	58	145	7225060145
T 2,5 160	64	160	7225060160
T 2,5 177,5	71	177,5	7225060177
T 2,5 180	72	180	7225060180
T 2,5 200	80	200	7225060200
T 2,5 225	90	225	7225060225
T 2,5 230	92	230	7225060230
T 2,5 245	98	245	7225060245
T 2,5 250	100	250	7225060250
T 2,5 265	106	265	7225060265
T 2,5 285	114	285	7225060285
T 2,5 290	116	290	7225060290
T 2,5 305	122	305	7225060305
T 2,5 317	127	317	7225060317
T 2,5 330	132	330	7225060330
T 2,5 380	152	380	7225060380
T 2,5 395	158	395	7225060395
T 2,5 420	168	420	7225060420
T 2,5 480	192	480	7225060480
T 2,5 500	200	500	7225060500
T 2,5 540	216	540	7225060540
T 2,5 600	240	600	7225060600
T 2,5 650	260	650	7225060650
T 2,5 680	272	680	7225060680
T 2,5 780	312	780	7225060780
T 2,5 915	366	915	7225060915
T 2,5 950	380	950	7225060950

# METRISCHE TANDRIEMEN "T"

## METRIC BELTS "T"

T5-10, T5-16, T5-25 - DIN 7721-1

**T 5**  
STEEL 5 mm



Materiaal: polyurethaan



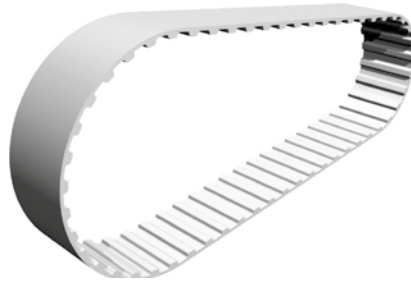
Type	Tanden	mm		Code T 5		
		Lengte	Breedte 10 mm	Breedte 16 mm	Breedte 25 mm	
T 5 150	30	150	7205100150	7205160150	7205250150	
T 5 165	33	165	7205100165	7205160165	7205250165	
T 5 180	36	180	7205100180	7205160180	7205250180	
T 5 185	37	185	7205100185	7205160185	7205250185	
T 5 200	40	200	7205100200	7205160200	7205250200	
T 5 210	42	210	7205100210	7205160210	7205250210	
T 5 215	43	215	7205100215	7205160215	7205250215	
T 5 220	44	220	7205100220	7205160220	7205250220	
T 5 225	45	225	7205100225	7205160225	7205250225	
T 5 245	49	245	7205100245	7205160245	7205250245	
T 5 250	50	250	7205100250	7205160250	7205250250	
T 5 255	51	255	7205100255	7205160255	7205250255	
T 5 260	52	260	7205100260	7205160260	7205250260	
T 5 270	54	270	7205100270	7205160270	7205250270	
T 5 280	56	280	7205100280	7205160280	7205250280	
T 5 295	59	295	7205100295	7205160295	7205250295	
T 5 305	61	305	7205100305	7205160305	7205250305	
T 5 330	66	330	7205100330	7205160330	7205250330	
T 5 340	68	340	7205100340	7205160340	7205250340	
T 5 350	70	350	7205100350	7205160350	7205250350	
T 5 355	71	355	7205100355	7205160355	7205250355	
T 5 365	73	365	7205100365	7205160365	7205250365	
T 5 390	78	390	7205100390	7205160390	7205250390	
T 5 400	80	400	7205100400	7205160400	7205250400	
T 5 410	82	410	7205100410	7205160410	7205250410	
T 5 420	84	420	7205100420	7205160420	7205250420	
T 5 455	91	455	7205100455	7205160455	7205250455	
T 5 460	92	460	7205100460	7205160460	7205250460	
T 5 475	95	475	7205100475	7205160475	7205250475	
T 5 480	96	480	7205100480	7205160480	7205250480	
T 5 500	100	500	7205100500	7205160500	7205250500	
T 5 505	101	505	7205100505	7205160505	7205250505	
T 5 510	102	510	7205100510	7205160510	7205250510	
T 5 525	105	525	7205100525	7205160525	7205250525	
T 5 545	109	545	7205100545	7205160545	7205250545	
T 5 550	110	550	7205100550	7205160550	7205250550	
T 5 560	112	560	7205100560	7205160560	7205250560	
T 5 575	115	575	7205100575	7205160575	7205250575	
T 5 590	118	590	7205100590	7205160590	7205250590	
T 5 610	122	610	7205100610	7205160610	7205250610	
T 5 620	124	620	7205100620	7205160620	7205250620	
T 5 630	126	630	7205100630	7205160630	7205250630	
T 5 650	130	650	7205100650	7205160650	7205250650	
T 5 660	132	660	7205100660	7205160660	7205250660	
T 5 690	138	690	7205100690	7205160690	7205250690	
T 5 700	140	700	7205100700	7205160700	7205250700	

# METRISCHE TANDRIEMEN "T"

## METRIC BELTS "T"

T5-10, T5-16, T5-25 - DIN 7721-1

**T 5**  
STEEK 5 mm



Materiaal: polyurethaan

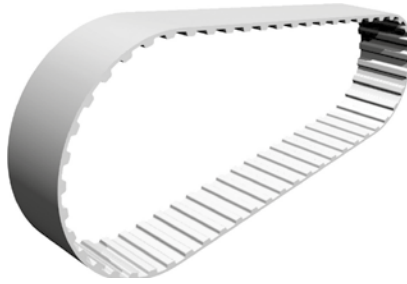
Type	Tanden	mm		Code T 5		
		Lengte	Breedte 10 mm	Breedte 16 mm	Breedte 25 mm	
T 5 720	144	720	7205100720	7205160720	7205250720	
T 5 750	150	750	7205100750	7205160750	7205250750	
T 5 765	153	765	7205100765	7205160765	7205250765	
T 5 780	156	780	7205100780	7205160780	7205250780	
T 5 800	160	800	7205100800	7205160800	7205250800	
T 5 815	163	815	7205100815	7205160815	7205250815	
T 5 830	166	830	7205100830			
T 5 840	168	840	7205100840	7205160840	7205250840	
T 5 900	180	900	7205100900	7205160900	7205250900	
T 5 920	184	920	7205100920	7205160920	7205250920	
T 5 940	188	940	7205100940	7205160940	7205250940	
T 5 990	198	990	7205100990	7205160990	7205250990	
T 5 1075	215	1075	7205101075	7205161075	7205251075	
T 5 1100	220	1100	7205101100	7205161100	7205251100	
T 5 1160	232	1160	7205101160	7205161160	7205251160	
T 5 1215	243	1215	7205101215	7205161215	7205251215	
T 5 1315	263	1315	7205101315	7205161315	7205251315	
T 5 1380	276	1380	7205101380	7205161380	7205251380	
T 5 1500	300	1500	7205101500	7205161500	7205251500	

# METRISCHE TANDRIEMEN "T"

## METRIC BELTS "T"

T10-16, T10-25, T10-32, T10-50 - DIN 7721-1

**T 10**  
STEEK 10 mm



Materiaal: polyurethaan

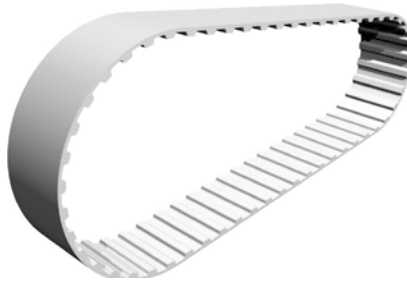
Type	Tanden	mm		Code T 10	Code T 10	Code T 10	Code T 10
		Lengte	Breedte 16 mm	Breedte 25 mm	Breedte 32 mm	Breedte 50 mm	
T 10 260	26	260	7210160260	7210250260	7210320260	7210500260	
T 10 370	37	370	7210160370	7210250370	7210320370	7210500370	
T 10 400	40	400	7210160400	7210250400	7210320400	7210500400	
T 10 410	41	410	7210160410	7210250410	7210320410	7210500410	
T 10 440	44	440	7210160440	7210250440	7210320440	7210500440	
T 10 480	48	480	7210160480	7210250480	7210320480	7210500480	
T 10 500	50	500	7210160500	7210250500	7210320500	7210500500	
T 10 530	53	530	7210160530	7210250530	7210320530	7210500530	
T 10 560	56	560	7210160560	7210250560	7210320560	7210500560	
T 10 600	60	600	7210160600	7210250600	7210320600	7210500600	
T 10 610	61	610	7210160610	7210250610	7210320610	7210500610	
T 10 630	63	630	7210160630	7210250630	7210320630	7210500630	
T 10 660	66	660	7210160660	7210250660	7210320660	7210500660	
T 10 680	68	680	7210160680	7210250680	7210320680	7210500680	
T 10 690	69	690	7210160690	7210250690	7210320690	7210500690	
T 10 700	70	700	7210160700	7210250700	7210320700	7210500700	
T 10 720	72	720	7210160720	7210250720	7210320720	7210500720	
T 10 730	73	730	7210160730	7210250730	7210320730	7210500730	
T 10 750	75	750	7210160750	7210250750	7210320750	7210500750	
T 10 780	78	780	7210160780	7210250780	7210320780	7210500780	
T 10 810	81	810	7210160810	7210250810	7210320810	7210500810	
T 10 840	84	840	7210160840	7210250840	7210320840	7210500840	
T 10 850	85	850	7210160850	7210250850	7210320850	7210500850	
T 10 880	88	880	7210160880	7210250880	7210320880	7210500880	
T 10 890	89	890	7210160890	7210250890	7210320890	7210500890	
T 10 900	90	900	7210160900	7210250900	7210320900	7210500900	
T 10 920	92	920	7210160920	7210250920	7210320920	7210500920	
T 10 960	96	960	7210160960	7210250960	7210320960	7210500960	
T 10 970	97	970	7210160970	7210250970	7210320970	7210500970	
T 10 980	98	980	7210160980	7210250980	7210320980	7210500980	
T 10 1010	101	1010	7210161010	7210251010	7210321010	7210501010	
T 10 1080	108	1080	7210161080	7210251080	7210321080	7210501080	
T 10 1110	111	1110	7210161110	7210251110	7210321110	7210501110	
T 10 1140	114	1140	7210161140	7210251140	7210321140	7210501140	
T 10 1150	115	1150	7210161150	7210251150	7210321150	7210501150	
T 10 1210	121	1210	7210161210	7210251210	7210321210	7210501210	
T 10 1240	124	1240	7210161240	7210251240	7210321240	7210501240	
T 10 1250	125	1250	7210161250	7210251250	7210321250	7210501250	
T 10 1300	130	1300	7210161300	7210251300	7210321300	7210501300	
T 10 1320	132	1320	7210161320	7210251320	7210321320	7210501320	
T 10 1350	135	1350	7210161350	7210251350	7210321350	7210501350	
T 10 1390	139	1390	7210161390	7210251390	7210321390	7210501390	
T 10 1400	140	1400	7210161400	7210251400	7210321400	7210501400	

# METRISCHE TANDRIEMEN "T"

## METRIC BELTS "T"

T10-16, T10-25, T10-32, T10-50 - DIN 7721-1

**T 10**  
STEEK 10 mm



Materiaal: polyurethaan

Type	Tanden	mm Lengte	Code T 10			
			Breedte 16 mm	Breedte 25 mm	Breedte 32 mm	Breedte 50 mm
T 10 1420	142	1420	7210161420	7210251420	7210321420	7210501420
T 10 1460	146	1460	7210161460	7210251460	7210321460	7210501460
T 10 1500	150	1500	7210161500	7210251500	7210321500	7210501500
T 10 1560	156	1560	7210161560	7210251560	7210321560	7210501560
T 10 1610	161	1610	7210161610	7210251610	7210321610	7210501610
T 10 1750	175	1750	7210161750	7210251750	7210321750	7210501750
T 10 1780	178	1780	7210161780	7210251780	7210321780	7210501780
T 10 1880	188	1880	7210161880	7210251880	7210321880	7210501880
T 10 1960	196	1960	7210161960	7210251960	7210321960	7210501960
T 10 2250	225	2250	7210162250	7210252250	7210322250	7210502250

# METRISCHE TANDRIEMEN "AT"

## METRIC BELTS "AT"

AT2,5, AT5, AT10 - DIN 7721-1

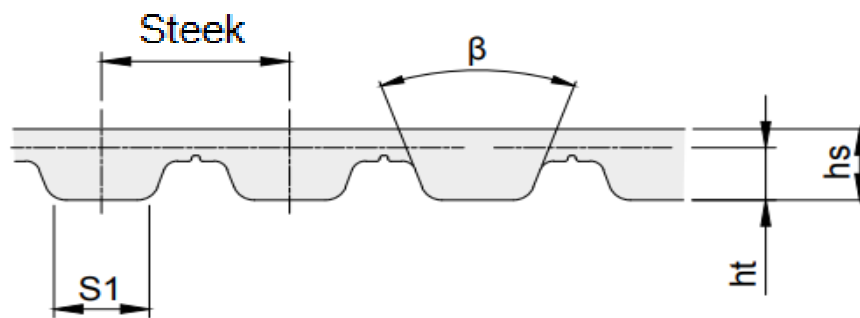
### Eigenschappen

- Temperatuurbereik van -30° C tot 80° C afhankelijk van functie
- Resistent tegen simpele olie, vet en brandstof
- Gelimiteerde resistentie tegen zuren en alkali
- Siliconenvrije materialen en productie
- Geschikt voor tropisch klimaat
- Resistent tegen veroudering
- Onderhoudsvrij
- Constate lengte
- Weinig geluidsoverlast
- Hoge flexibiliteit



### Properties

- Temperature range from -30 °C to 80 °C depending on application
- Resistant to simple oils, greases and fuel
- Limited resistance to acids and alkalies
- Silicone-free raw materials and production
- Suitable for tropical climates
- Resistant to aging
- Maintenance-free
- Constant length
- Low noise pollution
- High flexibility



### Maatvoering tandriem en tolerantie dikte

Type	Steek <i>mm</i>	hs <i>mm</i>	tol. <i>mm</i>	ht <i>mm</i>	S1 <i>mm</i>	β <i>mm</i>
<b>AT 5</b>	5	2,7	± 0,15	1,2	2,5	50°
<b>AT 10</b>	10	4,5	± 0,30	2,5	5,0	50°



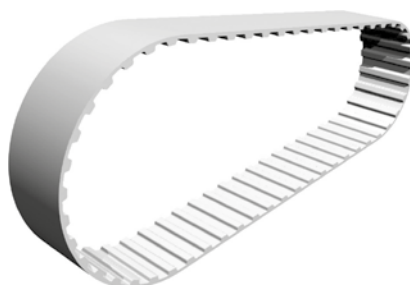


# METRISCHE TANDRIEMEN "AT"

## METRIC BELTS "AT"

AT5-10, AT5-16, AT5-25

### AT 5 STEEK 5 mm



Materiaal: polyurethaan

Type	Tanden	mm		Code AT 5		
		Lengte	Breedte 10 mm	Breedte 16 mm	Breedte 25 mm	
AT 5 225	45	225,0	7305100225	7305160225	7305250225	
AT 5 255	51	255,0	7305100255	7305160255	7305250255	
AT 5 260	52	260,0	7305100260	7305160260	7305250260	
AT 5 280	56	280,0	7305100280	7305160280	7305250280	
AT 5 300	60	300,0	7305100300	7305160300	7305250300	
AT 5 330	66	330,0	7305100330	7305160330	7305250330	
AT 5 340	68	340,0	7305100340	7305160340	7305250340	
AT 5 375	75	375,0	7305100375	7305160375	7305250375	
AT 5 390	78	390,0	7305100390	7305160390	7305250390	
AT 5 420	84	420,0	7305100420	7305160420	7305250420	
AT 5 450	90	450,0	7305100450	7305160450	7305250450	
AT 5 455	91	455,0	7305100455	7305160455	7305250455	
AT 5 480	96	480,0	7305100480	7305160480	7305250480	
AT 5 500	100	500,0	7305100500	7305160500	7305250500	
AT 5 525	105	525,0	7305100525	7305160525	7305250525	
AT 5 545	109	545,0	7305100545	7305160545	7305250545	
AT 5 600	120	600,0	7305100600	7305160600	7305250600	
AT 5 610	122	610,0	7305100610	7305160610	7305250610	
AT 5 620	124	620,0	7305100620	7305160620	7305250620	
AT 5 630	126	630,0	7305100630	7305160630	7305250630	
AT 5 660	132	660,0	7305100660	7305160660	7305250660	
AT 5 670	134	670,0	7305100670	7305160670	7305250670	
AT 5 690	138	690,0	7305100690	7305160690	7305250690	
AT 5 710	142	710,0	7305100710	7305160710	7305250710	
AT 5 720	144	720,0	7305100720	7305160720	7305250720	
AT 5 750	150	750,0	7305100750	7305160750	7305250750	
AT 5 780	156	780,0	7305100780	7305160780	7305250780	
AT 5 825	165	825,0	7305100825	7305160825	7305250825	
AT 5 860	172	860,0	7305100860	7305160860	7305250860	
AT 5 900	180	900,0	7305100900	7305160900	7305250900	
AT 5 920	184	920,0	7305100920	7305160920	7305250920	
AT 5 975	195	975,0	7305100975	7305160975	7305250975	
AT 5 1050	210	1050,0	7305101050	7305161050	7305251050	
AT 5 1125	225	1125,0	7305101125	7305161125	7305251125	
AT 5 1230	246	1230,0	7305101230	7305161230	7305251230	
AT 5 1500	300	1500,0	7305101500	7305161500	7305251500	
AT 5 1750	350	1750,0	7305101750	7305161750	7305251750	

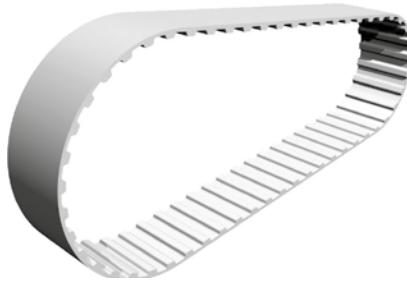
# METRISCHE TANDRIEMEN "AT"

## METRIC BELTS "AT"

AT10-16, AT10-25, AT10-32, AT10-50

### AT 10

STEEK 10 mm



Materiaal: polyurethaan

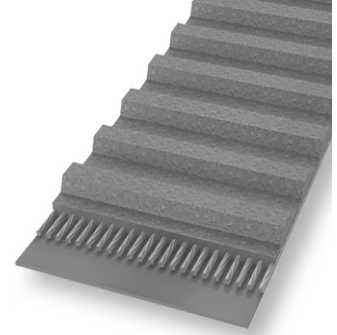
Type	Tanden	mm		Code AT 10		Code AT 10	
		Lengte	Breedte 16 mm	Breedte 25 mm	Breedte 32 mm	Breedte 50 mm	
AT 10 440	44	440	7310160440	7310250440	7310320440	7310500440	
AT 10 500	50	500	7310160500	7310250500	7310320500	7310500500	
AT 10 560	56	560	7310160560	7310250560	7310320560	7310500560	
AT 10 580	58	580	7310160580	7310250580	7310320580	7310500580	
AT 10 600	60	600	7310160600	7310250600	7310320600	7310500600	
AT 10 610	61	610	7310160610	7310250610	7310320610	7310500610	
AT 10 660	66	660	7310160660	7310250660	7310320660	7310500660	
AT 10 700	70	700	7310160700	7310250700	7310320700	7310500700	
AT 10 730	73	730	7310160730	7310250730	7310320730	7310500730	
AT 10 780	78	780	7310160780	7310250780	7310320780	7310500780	
AT 10 800	80	800	7310160800	7310250800	7310320800	7310500800	
AT 10 840	84	840	7310160840	7310250840	7310320840	7310500840	
AT 10 880	88	880	7310160880	7310250880	7310320880	7310500880	
AT 10 890	89	890	7310160890	7310250890	7310320890	7310500890	
AT 10 920	92	920	7310160920	7310250920	7310320920	7310500920	
AT 10 960	96	960	7310160960	7310250960	7310320960	7310500960	
AT 10 980	98	980	7310160980	7310250980	7310320980	7310500980	
AT 10 1000	100	1000	7310161000	7310251000	7310321000	7310501000	
AT 10 1010	101	1010	7310161010	7310251010	7310321010	7310501010	
AT 10 1050	105	1050	7310161050	7310251050	7310321050	7310501050	
AT 10 1080	108	1080	7310161080	7310251080	7310321080	7310501080	
AT 10 1100	110	1100	7310161100	7310251100	7310321100	7310501100	
AT 10 1150	115	1150	7310161150	7310251150	7310321150	7310501150	
AT 10 1210	121	1210	7310161210	7310251210	7310321210	7310501210	
AT 10 1250	125	1250	7310161250	7310251250	7310321250	7310501250	
AT 10 1280	128	1280	7310161280	7310251280	7310321280	7310501280	
AT 10 1300	130	1300	7310161300	7310251300	7310321300	7310501300	
AT 10 1320	132	1320	7310161320	7310251320	7310321320	7310501320	
AT 10 1350	135	1350	7310161350	7310251350	7310321350	7310501350	
AT 10 1360	136	1360	7310161360	7310251360	7310321360	7310501360	
AT 10 1400	140	1400	7310161400	7310251400	7310321400	7310501400	
AT 10 1420	142	1420		7310251420		7310501420	
AT 10 1480	148	1480	7310161480	7310251480	7310321480	7310501480	
AT 10 1500	150	1500	7310161500	7310251500	7310321500	7310501500	
AT 10 1600	160	1600	7310161600	7310251600	7310321600	7310501600	
AT 10 1700	170	1700	7310161700	7310251700	7310321700	7310501700	
AT 10 1800	180	1800	7310161800	7310251800	7310321800	7310501800	
AT 10 1940	194	1940	7310161940	7310251940	7310321940	7310501940	

# TANDRIEMEN TIMING BELTS

MXL, XL, L, H, XH - ISO 5296

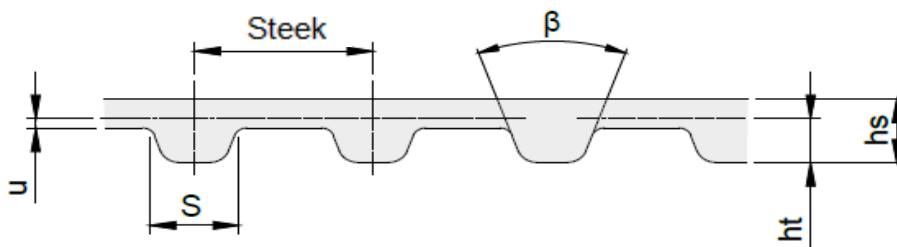
## Eigenschappen

- Temperatuurbereik van -20° C tot 100° C afhankelijk van functie
- Resistent tegen olie
- Ozon-resistent
- Geschikt voor tropisch klimaat
- Resistent tegen veroudering
- Onderhoudsvrij



## Properties

- Temperature range from -20 °C to 100 °C depending on application
- Conditionally resistant to oil
- Ozone-resistant
- Suitable for tropical climates
- Resistant to aging
- Maintenance-free



## Maatvoering tandriem

Type	mm Steek	mm hs	mm ht	mm S	mm u	Graden° β
MXL	2,032	1,14	0,51	1,14	0,254	40°
XL	5,08	2,30	1,27	2,57	0,254	50°
L	9,525	3,60	1,91	4,65	0,381	40°
H	12,70	4,30	2,29	6,12	0,686	40°
XH	22,225	11,2	6,35	12,57	1,397	40°

# TANDRIEMEN TIMING BELTS

MXL - ISO 5296

**MXL**  
STEEK 0,080 (2,032 mm)



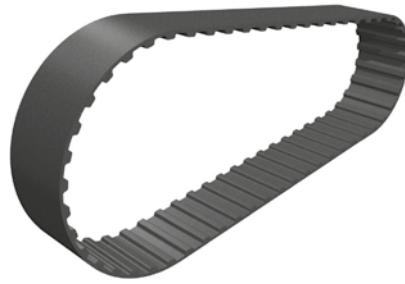
Materiaal: neopreen

Type	Tanden	lengte		Code MXL 012	Code MXL 019	Code MXL 025	
		Inch	mm	Breedte 3,05 mm	Breedte 4,83 mm	Breedte 6,35 mm	
44	MXL	55	4,40	111,76	7410120440	7410190440	7410250440
44,8	MXL	56	4,48	113,79	7410120448	7410190448	7410250448
46,4	MXL	58	4,64	117,86	7410120464	7410190464	7410250464
48	MXL	60	4,80	121,92	7410120480	7410190480	7410250480
48,8	MXL	61	4,88	123,95	7410120488	7410190488	7410250488
50,4	MXL	63	5,04	128,02	7410120504	7410190504	7410250504
53,6	MXL	67	5,36	136,14	7410120536	7410190536	7410250536
54,4	MXL	68	5,44	138,18	7410120544	7410190544	7410250544
56	MXL	70	5,60	142,24	7410120560	7410190560	7410250560
56,8	MXL	71	5,68	144,27	7410120568	7410190568	7410250568
57,6	MXL	72	5,76	146,30	7410120576	7410190576	7410250576
60	MXL	75	6,00	152,40	7410120600	7410190600	7410250600
61,6	MXL	77	6,16	156,46	7410120616	7410190616	7410250616
64	MXL	80	6,40	162,56	7410120640	7410190640	7410250640
65,6	MXL	82	6,56	166,62	7410120656	7410190656	7410250656
67,2	MXL	84	6,72	170,69	7410120672	7410190672	7410250672
68	MXL	85	6,80	172,72	7410120680	7410190680	7410250680
69,6	MXL	87	6,96	176,78	7410120696	7410190696	7410250696
70,4	MXL	88	7,04	178,82	7410120704	7410190704	7410250704
72	MXL	90	7,20	182,88	7410120720	7410190720	7410250720
75,2	MXL	94	7,52	191,01	7410120752	7410190752	7410250752
76	MXL	95	7,60	193,04	7410120760	7410190760	7410250760
77,6	MXL	97	7,76	197,10	7410120776	7410190776	7410250776
80	MXL	100	8,00	203,20	7410120800	7410190800	7410250800
80,8	MXL	101	8,08	205,23	7410120808	7410190808	7410250808
82,4	MXL	103	8,24	209,30	7410120824	7410190824	7410250824
84	MXL	105	8,40	213,36	7410120840	7410190840	7410250840
84,8	MXL	106	8,48	215,39	7410120848	7410190848	7410250848
88	MXL	110	8,80	223,52	7410120880	7410190880	7410250880
89,6	MXL	112	8,96	227,58	7410120896	7410190896	7410250896
90,4	MXL	113	9,04	229,62	7410120904	7410190904	7410250904
91,2	MXL	114	9,12	231,65	7410120912	7410190912	7410250912
94,4	MXL	118	9,44	239,78	7410120944	7410190944	7410250944
96	MXL	120	9,60	243,84	7410120960	7410190960	7410250960
97,6	MXL	122	9,76	247,90	7410120976	7410190976	7410250976
98,4	MXL	123	9,84	249,94	7410120984	7410190984	7410250984
100	MXL	125	10,00	254,00	7410121000	7410191000	7410251000
100,8	MXL	126	10,08	256,03	7410121008	7410191008	7410251008
105,6	MXL	132	10,56	268,22	7410121056	7410191056	7410251056
112	MXL	140	11,20	284,48	7410121120	7410191120	7410251120
120	MXL	150	12,00	304,80	7410121200	7410191200	7410251200
124	MXL	155	12,40	314,96	7410121240	7410191240	7410251240
131,2	MXL	164	13,12	333,25	7410121312	7410191312	7410251312
132	MXL	165	13,20	335,28	7410121320	7410191320	7410251320
132,8	MXL	166	13,28	337,31	7410121328	7410191328	7410251328
136	MXL	170	13,60	345,44	7410121360	7410191360	7410251360

# TANDRIEMEN TIMING BELTS

MXL - ISO 5296

**MXL**  
STEEK 0,080 (2,032 mm)



Materiaal: neopreen

Type	Tanden	lengte		Code MXL 012	Code MXL 019	Code MXL 025
		Inch	mm	Breedte 3,05 mm	Breedte 4,83 mm	Breedte 6,35 mm
140 MXL	175	14,00	355,60	7410121400	7410191400	7410251400
144 MXL	180	14,40	365,76	7410121440	7410191440	7410251440
147,2 MXL	184	14,72	373,89	7410121472	7410191472	7410251472
180 MXL	225	18,00	457,20	7410121800	7410191800	7410251800
188,8 MXL	236	18,88	479,55	7410121888	7410191888	7410251888
200,8 MXL	251	20,08	510,03	7410122008	7410192008	7410252008
238,4 MXL	298	23,84	605,54	7410122384	7410192384	7410252384
277,6 MXL	347	27,76	705,10	7410122776	7410192776	7410252776
292 MXL	365	29,20	741,68	7410122920	7410192920	7410252920
296,8 MXL	371	29,68	753,87	7410122968	7410192968	7410252968
297,6 MXL	372	29,76	755,90	7410122976	7410192976	7410252976
320 MXL	400	32,00	812,80	7410123200	7410193200	7410253200
329,6 MXL	412	32,96	837,18	7410123296	7410193296	7410253296
347,2 MXL	434	34,72	881,89	7410123472	7410193472	7410253472
362,4 MXL	453	36,24	920,50	7410123624	7410193624	7410253624
370,4 MXL	463	37,04	940,82	7410123704	7410193704	7410253704
398,4 MXL	498	39,84	1011,94	7410123984	7410193984	7410253984
404 MXL	505	40,40	1026,16	7410124040	7410194040	7410254040

# TANDRIEMEN TIMING BELTS

XL - ISO 5296

**XL**  
**STEEK 1/5" (5,080 mm)**



Materiaal: neopreen

Type	Tanden	lengte		Code XL 025	Code XL 031	Code XL 037
		Inch	mm	Breedte 6,35 mm	Breedte 7,87 mm	Breedte 9,40 mm
60 XL	30	6,00	152,40	7420250060	7420310060	7420370060
70 XL	35	7,00	177,80	7420250070	7420310070	7420370070
76 XL	38	7,60	193,04	7420250076	7420310076	7420370076
80 XL	40	8,00	203,20	7420250080	7420310080	7420370080
86 XL	43	8,60	218,44	7420250086	7420310086	7420370086
88 XL	44	8,80	223,52	7420250088	7420310088	7420370088
90 XL	45	9,00	228,60	7420250090	7420310090	7420370090
92 XL	46	9,20	233,68	7420250092	7420310092	7420370092
94 XL	47	9,40	238,76	7420250094	7420310094	7420370094
96 XL	48	9,60	243,84	7420250096	7420310096	7420370096
98 XL	49	9,80	248,92	7420250098	7420310098	7420370098
100 XL	50	10,00	254,00	7420250100	7420310100	7420370100
102 XL	51	10,20	259,08	7420250102	7420310102	7420370102
106 XL	53	10,60	269,24	7420250106	7420310106	7420370106
108 XL	54	10,80	274,32	7420250108	7420310108	7420370108
110 XL	55	11,00	279,40	7420250110	7420310110	7420370110
112 XL	56	11,20	284,48	7420250112	7420310112	7420370112
114 XL	57	11,40	289,56	7420250114	7420310114	7420370114
116 XL	58	11,60	294,64	7420250116	7420310116	7420370116
118 XL	59	11,80	299,72	7420250118	7420310118	7420370118
120 XL	60	12,00	304,80	7420250120	7420310120	7420370120
124 XL	62	12,40	314,96	7420250124	7420310124	7420370124
126 XL	63	12,60	320,04	7420250126	7420310126	7420370126
130 XL	65	13,00	330,20	7420250130	7420310130	7420370130
134 XL	67	13,40	340,36	7420250134	7420310134	7420370134
136 XL	68	13,60	345,44	7420250136	7420310136	7420370136
138 XL	69	13,80	350,52	7420250138	7420310138	7420370138
140 XL	70	14,00	355,60	7420250140	7420310140	7420370140
142 XL	71	14,20	360,68	7420250142	7420310142	7420370142
148 XL	74	14,80	375,92	7420250148	7420310148	7420370148
150 XL	75	15,00	381,00	7420250150	7420310150	7420370150
156 XL	78	15,60	396,24	7420250156	7420310156	7420370156
160 XL	80	16,00	406,40	7420250160	7420310160	7420370160
162 XL	81	16,20	411,48	7420250162	7420310162	7420370162
166 XL	83	16,60	421,64	7420250166	7420310166	7420370166
168 XL	84	16,80	426,72	7420250168	7420310168	7420370168
170 XL	85	17,00	431,80	7420250170	7420310170	7420370170
174 XL	87	17,40	441,96	7420250174	7420310174	7420370174
176 XL	88	17,60	447,04	7420250176	7420310176	7420370176
178 XL	89	17,80	452,12	7420250178	7420310178	7420370178
180 XL	90	18,00	457,20	7420250180	7420310180	7420370180
182 XL	91	18,20	462,28	7420250182	7420310182	7420370182
184 XL	92	18,40	467,36	7420250184	7420310184	7420370184
188 XL	94	18,80	477,52	7420250188	7420310188	7420370188
190 XL	95	19,00	482,60	7420250190	7420310190	7420370190
194 XL	97	19,40	492,76	7420250194	7420310194	7420370194
196 XL	98	19,60	497,84	7420250196	7420310196	7420370196
198 XL	99	19,80	502,92	7420250198	7420310198	7420370198



# TANDRIEMEN TIMING BELTS

XL - ISO 5296

**XL**  
**STEEK 1/5" (5,080 mm)**



Materiaal: neopreen

Type	Tanden	lengte		Code XL 025	Code XL 031	Code XL 037
		Inch	mm	Breedte 6,35 mm	Breedte 7,87 mm	Breedte 9,40 mm
200 XL	100	20,00	508,00	7420250200	7420310200	7420370200
210 XL	105	21,00	533,40	7420250210	7420310210	7420370210
220 XL	110	22,00	558,80	7420250220	7420310220	7420370220
228 XL	114	22,80	579,12	7420250228	7420310228	7420370228
230 XL	115	23,00	584,20	7420250230	7420310230	7420370230
232 XL	116	23,20	589,28	7420250232	7420310232	7420370232
234 XL	117	23,40	594,36	7420250234	7420310234	7420370234
240 XL	120	24,00	609,60	7420250240	7420310240	7420370240
244 XL	122	24,40	619,76	7420250244	7420310244	7420370244
248 XL	124	24,80	629,92	7420250248	7420310248	7420370248
250 XL	125	25,00	635,00	7420250250	7420310250	7420370250
260 XL	130	26,00	660,40	7420250260	7420310260	7420370260
270 XL	135	27,00	685,80	7420250270	7420310270	7420370270
272 XL	136	27,20	690,88	7420250272	7420310272	7420370272
274 XL	137	27,40	695,96	7420250274	7420310274	7420370274
280 XL	140	28,00	711,20	7420250280	7420310280	7420370280
286 XL	143	28,60	726,44	7420250286	7420310286	7420370286
290 XL	145	29,00	736,60	7420250290	7420310290	7420370290
296 XL	148	29,60	751,84	7420250296	7420310296	7420370296
300 XL	150	30,00	762,00	7420250300	7420310300	7420370300
306 XL	153	30,60	777,24	7420250306	7420310306	7420370306
310 XL	155	31,00	787,40	7420250310	7420310310	7420370310
316 XL	158	31,60	802,64	7420250316	7420310316	7420370316
320 XL	160	32,00	812,80	7420250320	7420310320	7420370320
322 XL	161	32,20	817,88	7420250322	7420310322	7420370322
330 XL	165	33,00	838,20	7420250330	7420310330	7420370330
340 XL	170	34,00	863,60	7420250340	7420310340	7420370340
344 XL	172	34,40	873,76	7420250344	7420310344	7420370344
350 XL	175	35,00	889,00	7420250350	7420310350	7420370350
360 XL	180	36,00	914,40	7420250360	7420310360	7420370360
380 XL	190	38,00	965,20	7420250380	7420310380	7420370380
382 XL	191	38,20	970,28	7420250382	7420310382	7420370382
388 XL	194	38,80	985,52	7420250388	7420310388	7420370388
390 XL	195	39,00	990,60	7420250390	7420310390	7420370390
392 XL	196	39,20	995,68	7420250392	7420310392	7420370392
412 XL	206	41,20	1046,48	7420250412	7420310412	7420370412
414 XL	207	41,40	1051,56	7420250414	7420310414	7420370414
432 XL	216	43,20	1097,28	7420250432	7420310432	7420370432
434 XL	217	43,40	1102,36	7420250434	7420310434	7420370434
438 XL	219	43,80	1112,52	7420250438	7420310438	7420370438
460 XL	230	46,00	1168,40	7420250460	7420310460	7420370460
498 XL	249	49,80	1264,92	7420250498	7420310498	7420370498
506 XL	253	50,60	1285,24	7420250506	7420310506	7420370506
514 XL	257	51,40	1305,56	7420250514	7420310514	7420370514
580 XL	290	58,00	1473,20	7420250580	7420310580	7420370580
630 XL	315	63,00	1600,20	7420250630	7420310630	7420370630
730 XL	365	73,00	1854,20	7420250730	7420310730	7420370730



# TANDRIEMEN TIMING BELTS

L - ISO 5296

**L**

**STEEK 3/8" (9,525 mm)**



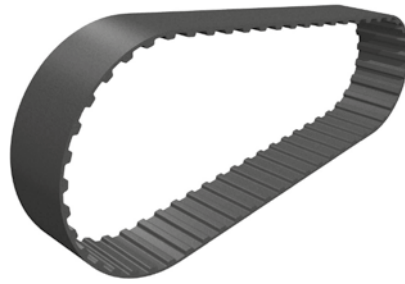
Materiaal: neopreen

Type	Tanden	lengte		Code L 050	Code L 075	Code L 100
		Inch	mm	Breedte 12,70 mm	Breedte 19,05 mm	Breedte 25,40 mm
124 L	33	12,40	314,96	7430500124	7430750124	7431000124
150 L	40	15,00	381,00	7430500150	7430750150	7431000150
173 L	46	17,30	439,42	7430500173	7430750173	7431000173
187 L	50	18,70	474,98	7430500187	7430750187	7431000187
210 L	56	21,00	533,40	7430500210	7430750210	7431000210
225 L	60	22,50	571,50	7430500225	7430750225	7431000225
236 L	63	23,60	599,44	7430500236	7430750236	7431000236
240 L	64	24,00	609,60	7430500240	7430750240	7431000240
244 L	65	24,40	619,76	7430500244	7430750244	7431000244
255 L	68	25,50	647,70	7430500255	7430750255	7431000255
270 L	72	27,00	685,80	7430500270	7430750270	7431000270
285 L	76	28,50	723,90	7430500285	7430750285	7431000285
300 L	80	30,00	762,00	7430500300	7430750300	7431000300
322 L	86	32,20	817,88	7430500322	7430750322	7431000322
345 L	92	34,50	876,30	7430500345	7430750345	7431000345
367 L	98	36,70	932,18	7430500367	7430750367	7431000367
390 L	104	39,00	990,60	7430500390	7430750390	7431000390
405 L	108	40,50	1028,70	7430500405	7430750405	7431000405
420 L	112	42,00	1066,80	7430500420	7430750420	7431000420
450 L	120	45,00	1143,00	7430500450	7430750450	7431000450
454 L	121	45,40	1153,16	7430500454	7430750454	7431000454
480 L	128	48,00	1219,20	7430500480	7430750480	7431000480
510 L	136	51,00	1295,40	7430500510	7430750510	7431000510
540 L	144	54,00	1371,60	7430500540	7430750540	7431000540
600 L	160	60,00	1524,00	7430500600	7430750600	7431000600
817 L	218	81,70	2075,18	7430500817	7430750817	7431000817

# TANDRIEMEN TIMING BELTS

H - ISO 5296

**H**  
**STEEK 1/2" (12,70 mm)**



Materiaal: neopreen

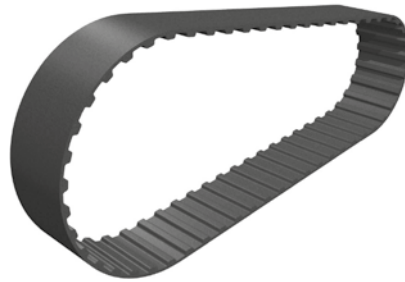
Type	Tanden	lengte		Code H 075	Code H 100	Code H 150	Code H 200	Code H 300
		Inch	mm	Brdte 19,50 mm	Brdte 25,40 mm	Brdte 38,10 mm	Brdte 50,80 mm	Brdte 76,20 mm
240 H	48	24	609,6	7440750240	7441000240	7441500240	7442000240	7443000240
255 H	51	25,50	647,70	7440750255	7441000255	7441500255	7442000255	7443000255
270 H	54	27,00	685,80	7440750270	7441000270	7441500270	7442000270	7443000270
300 H	60	30,00	762,00	7440750300	7441000300	7441500300	7442000300	7443000300
330 H	66	33,00	838,20	7440750330	7441000330	7441500330	7442000330	7443000330
360 H	72	36,00	914,40	7440750360	7441000360	7441500360	7442000360	7443000360
370 H	74	37,00	939,80	7440750370	7441000370	7441500370	7442000370	7443000370
390 H	78	39,00	990,60	7440750390	7441000390	7441500390	7442000390	7443000390
420 H	84	42,00	1066,80	7440750420	7441000420	7441500420	7442000420	7443000420
450 H	90	45,00	1143,00	7440750450	7441000450	7441500450	7442000450	7443000450
480 H	96	48,00	1219,20	7440750480	7441000480	7441500480	7442000480	7443000480
510 H	102	51,00	1295,40	7440750510	7441000510	7441500510	7442000510	7443000510
540 H	108	54,00	1371,60	7440750540	7441000540	7441500540	7442000540	7443000540
570 H	114	57,00	1447,80	7440750570	7441000570	7441500570	7442000570	7443000570
600 H	120	60,00	1524,00	7440750600	7441000600	7441500600	7442000600	7443000600
630 H	126	63,00	1600,20	7440750630	7441000630	7441500630	7442000630	7443000630
660 H	132	66,00	1676,40	7440750660	7441000660	7441500660	7442000660	7443000660
670 H	134	67,00	1701,80	7440750670	7441000670	7441500670	7442000670	7443000670
700 H	140	70,00	1778,00	7440750700	7441000700	7441500700	7442000700	7443000700
730 H	146	73,00	1854,20	7440750730	7441000730	7441500730	7442000730	7443000730
750 H	150	75,00	1905,00	7440750750	7441000750	7441500750	7442000750	7443000750
800 H	160	80,00	2032,00	7440750800	7441000800	7441500800	7442000800	7443000800
850 H	170	85,00	2159,00	7440750850	7441000850	7441500850	7442000850	7443000850
900 H	180	90,00	2286,00	7440750900	7441000900	7441500900	7442000900	7443000900
1000 H	200	100,00	2540,00	7440751000	7441001000	7441501000	7442001000	7443001000
1100 H	220	110,00	2794,00	7440751100	7441001100	7441501100	7442001100	7443001100
1120 H	224	112,00	2844,80	7440751120	7441001120	7441501120	7442001120	7443001120
1140 H	228	114,00	2895,60	7440751140	7441001140	7441501140	7442001140	7443001140
1250 H	250	125,00	3175,00	7440751250	7441001250	7441501250	7442001250	7443001250
1400 H	280	140,00	3556,00	7440751400	7441001400	7441501400	7442001400	7443001400
1700 H	340	170,00	4318,00	7440751700	7441001700	7441501700	7442001700	7443001700

# TANDRIEMEN TIMING BELTS

XH - ISO 5296

## XH

STEEK 7/8" (22,225 mm)



Materiaal: neopreen

Type	Tanden	lengte		Code XH 200	Code XH 300	Code XH 400
		Inch	mm	Breedte 50,80 mm	Breedte 76,20 mm	Breedte 101,60 mm
507 XH	58	50,75	1289,05	7452000507	7453000507	7454000507
534 XH	61	53,40	1356,36	7452000534	7453000534	7454000534
560 XH	64	56,00	1422,40	7452000560	7453000560	7454000560
630 XH	72	63,00	1600,20	7452000630	7453000630	7454000630
700 XH	80	70,00	1778,00	7452000700	7453000700	7454000700
770 XH	88	77,00	1955,80	7452000770	7453000770	7454000770
840 XH	96	84,00	2133,60	7452000840	7453000840	7454000840
980 XH	112	98,00	2489,20	7452000980	7453000980	7454000980
1120 XH	128	112,00	2844,80	7452001120	7453001120	7454001120
1260 XH	144	126,00	3200,40	7452001260	7453001260	7454001260
1400 XH	160	140,00	3556,00	7452001400	7453001400	7454001400
1540 XH	176	154,00	3911,60	7452001540	7453001540	7454001540
1750 XH	200	175,00	4445,00	7452001750	7453001750	7454001750