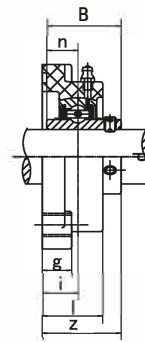
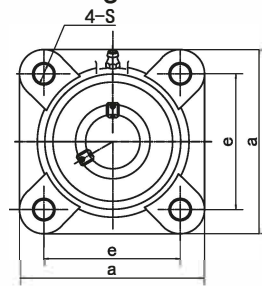


Ball Bearing Units

Thermoplastic Housed Square Flange Units



Unit NO.	Dimensions (mm / in.)											Max. Torque		Bearing No.	Housing No.	Weight (kg)
	d	a	e	g	l	s	z	i	B	n	Bolt D	Nm				
SS-UCFPL204	20 3/4	86.0 3-3/8	63.5 2-33/64	13.4 17/32	27.8 1-3/32	11.0 7/16	36.3 1-7/16	18.0 45/64	31.0 1.221	12.7 0.500	M10 3/8	18	SS-UC204	FPL204	0.29	
SS-UCFPL205	25 13/16 ; 7/8 ; 15/16 ; 1	95.0 3-3/4	70.0 2-3/4	14.3 9/16	28.0 1-3/32	11.0 7/16	36.7 1-7/16	17.0 43/64	34.1 1.343	14.3 0.563	M10 3/8	25	SS-UC205	FPL205	0.36	
SS-UCFPL206	30 1-1/16 ; 1-1/8 ; 1-3/16 ; 1-1/4	107.0 4-7/32	83.0 3-17/64	14.3 9/16	31.5 1-15/64	11.0 7/16	41.4 1-5/8	19.2 3/4	38.1 1.500	15.9 0.626	M10 3/8	30	SS-UC206	FPL206	0.50	
SS-UCFPL207	35 1-1/4 ; 1-5/16 ; 1-3/8 ; 1-7/16	118.0 4-21/32	92.0 3-5/8	15.5 39/64	34.8 1-3/8	13.0 33/64	46.9 1-27/32	21.5 27/32	42.9 1.689	17.5 0.689	M12 7/16	35	SS-UC207	FPL207	0.74	
SS-UCFPL208	40 1-1/2 ; 1-9/16	130.0 5-1/8	102.0 4-1/64	17.0 43/64	37.5 1-15/32	14.0 35/64	53.2 2-3/32	23.0 29/32	49.2 1.937	19.0 0.748	M12 7/16	40	SS-UC208	FPL208	0.97	
SS-UCFPL209	45 1-5/8 ; 1-11/16 ; 1-3/4	137.0 5-13/32	105.0 4-9/64	19.0 3/4	41.0 1-39/64	17.0 43/64	54.2 2-9/64	24.0 15/16	49.2 1.937	19.0 0.748	M16 5/8	45	SS-UC209	FPL209	1.10	
SS-UCFPL210	50 1-13/16 ; 1-7/8 ; 1-15/16 ; 2	143.0 5-5/8	111.0 4-3/8	21.0 53/64	43.0 1-11/16	17.0 43/64	57.6 2-17/64	25.0 63/64	51.6 2.032	19.0 0.748	M16 5/8	50	SS-UC210	FPL210	1.25	
SS-UCFPL211	55 2 ; 2-1/16 ; 2-1/8 ; 2-3/16	162.0 6-3/8	130.0 5-1/8	20.0 25/32	43.0 1-11/16	19.0 3/4	58.4 2-19/64	25.0 63/64	55.6 2.189	22.2 0.874	M16 5/8	55	SS-UC211	FPL211	1.40	
SS-UCFPL212	60 2-1/4 ; 2-5/16 ; 2-3/8 ; 2-7/16	175.0 6-57/64	143.0 5-5/8	20.0 25/32	48.0 1-57/64	19.0 3/4	68.7 2-45/64	29.0 1-9/64	65.1 2.563	25.4 1.000	M16 5/8	60	SS-UC212	FPL212	1.60	