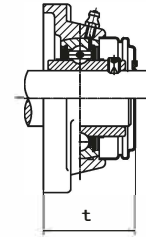
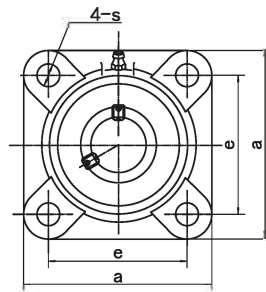
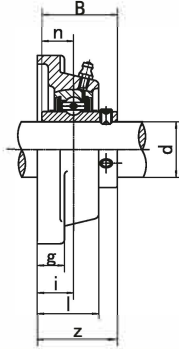


**Flange Units (Square)**
**UCF2 (Normal-duty)**

 UCF-C<sub>1</sub>(D<sub>1</sub>)

Unit NO.	Dimensions ( mm / in. )											Bolt Size mm/in.	Bearing No.	Housing No.	Weight (kg)
	d	a	e	i	g	l	s	z	t	B	n				
UCF201 201-8	12 1/2	86 3-3/8	64 2-33/64	15 19/32	12 15/32	25.5 1	12 15/32	33.3 1-5/16	37.5 1-31/64	31 1.2205	12.7 0.500	M10 3/8	UC201 UC201-8	F201	0.59 0.58
UCF202 202-9 202-10	15 9/16 5/8	86 3-3/8	64 2-33/64	15 19/32	12 15/32	25.5 1	12 15/32	33.3 1-5/16	37.5 1-31/64	31 1.2205	12.7 0.500	M10 3/8	UC202 UC202-9 UC202-10	F202	0.58 0.58 0.58
UCF203 203-11	17 11/16	86 3-3/8	64 2-33/64	15 19/32	12 15/32	25.5 1	12 15/32	33.3 1-5/16	37.5 1-31/64	31 1.2205	12.7 0.500	M10 3/8	UC203 UC203-11	F203	0.57 0.56
UCF204 204-12	20 3/4	86 3-3/8	64 2-33/64	15 19/32	12 15/32	25.5 1	12 15/32	33.3 1-5/16	37.5 1-31/64	31 1.2205	12.7 0.500	M10 3/8	UC204 UC204-12	F204	0.55 0.55
UCF205 205-13 205-14 205-15 205-16	25 13/16 7/8 15/16 1	95 3-3/4	70 2-3/4	16 5/8	14 35/64	27 1-1/16	12 15/32	35.8 1-13/32	40 1-9/16	34.1 1.3425	14.3 0.563	M10 3/8	UC205 UC205-13 UC205-14 UC205-15 UC205-16	F205	0.73 0.77 0.76 0.74 0.73
UCF206 206-17 206-18 206-19 206-20	30 1-1/16 1-1/8 1-3/16 1-1/4	108 4-1/4	83 3-17/64	18 45/64	14 35/64	31 1-7/32	12 15/32	40.2 1-19/32	44.5 1-3/4	38.1 1.5000	15.9 0.626	M10 3/8	UC206 UC206-17 UC206-18 UC206-19 UC206-20	F206	1.02 1.03 1.04 1.02 1.01
UCF207 207-20 207-21 207-22 207-23	35 1-1/4 1-5/16 1-3/8 1-7/16	117 4-39/64	92 3-5/8	19 3/4	16 5/8	34 1-11/32	14 35/64	44.4 1-3/4	48.5 1-29/32	42.9 1.6890	17.5 0.689	M12 7/16	UC207 UC207-20 UC207-21 UC207-22 UC207-23	F207	1.33 1.40 1.37 1.34 1.31
UCF208 208-24 208-25	40 1-1/2 1-9/16	130 5-1/8	102 4-1/64	21 53/64	16 5/8	36 1-27/64	16 5/8	51.2 2-1/64	55.5 2-3/16	49.2 1.9370	19 0.748	M14 1/2	UC208 UC208-24 UC208-25	F208	1.67 1.71 1.68
UCF209 209-26 209-27 209-28	45 1-5/8 1-11/16 1-3/4	137 5-13/32	105 4-9/64	22 55/64	18 23/32	38 1-1/2	16 5/8	52.2 2-1/16	56.5 2-7/32	49.2 1.9370	19 0.748	M14 1/2	UC209 UC209-26 UC209-27 UC209-28	F209	2.00 2.10 2.06 2.02
UCF210 210-29 210-30 210-31 210-32	50 1-13/16 1-7/8 1-15/16 2	143 5-5/8	111 4-3/8	22 55/64	18 23/32	40 1-9/16	16 5/8	54.6 2-5/32	59.5 2-11/32	51.6 2.0315	19 0.748	M14 1/2	UC210 UC210-29 UC210-30 UC210-31 UC210-32	F210	2.32 2.44 2.39 2.34 2.30
UCF211 211-32 211-33 211-34 211-35	55 2 2-1/16 2-1/8 2-3/16	162 6-3/8	130 5-1/8	25 63/64	20 25/32	43 1-11/16	19 3/4	58.4 2-5/16	63 2-31/64	55.6 2.1890	22.2 0.874	M16 5/8	UC211 UC211-32 UC211-33 UC211-34 UC211-35	F211	3.12 3.27 3.21 3.17 3.10
UCF212 212-36 212-37 212-38 212-39	60 2-1/4 2-5/16 2-3/8 2-7/16	175 6-57/64	143 5-5/8	29 1-9/64	20 25/32	48 1-57/64	19 3/4	68.7 2-45/64	73.5 2-57/64	65.1 2.5630	25.4 1.000	M16 5/8	UC212 UC212-36 UC212-37 UC212-38 UC212-39	F212	3.95 4.08 4.00 3.93 3.86
UCF213 213-40 213-41	65 2-1/2 2-9/16	187 7-23/64	149 5-55/64	30 1-3/16	22 55/64	50 1-31/32	19 3/4	69.7 2-3/4	74.5 2-15/16	65.1 2.5630	25.4 1.000	M16 5/8	UC213 UC213-40 UC213-41	F213	4.81 4.90 4.81
UCF214 214-42 214-43 214-44	70 2-5/8 2-11/16 2-3/4	193 7-19/32	152 5-63/64	31 1-7/32	22 55/64	54 2-1/8	19 3/4	75.4 2-31/32	81.5 3-13/64	74.6 2.9370	30.2 1.189	M16 5/8	UC214 UC214-42 UC214-43 UC214-44	F214	5.42 5.63 5.53 5.43
UCF215 215-45 215-46 215-47 215-48	75 2-13/16 2-7/8 2-15/16 3	200 7-7/8	159 6-17/64	34 1-11/32	22 55/64	56 2-7/32	19 3/4	78.5 3-3/32	83.5 3-9/32	77.8 3.0630	33.3 1.311	M16 5/8	UC215 UC215-45 UC215-46 UC215-47 UC215-48	F215	5.94 5.94 6.19 6.08 5.88
UCF216 216-49 216-50 216-51	80 3-1/16 3-1/8 3-3/16	208 8-3/16	165 6-1/2	34 1-11/32	22 55/64	58 2-9/32	23 29/32	83.3 3-9/32	88.5 3-31/64	82.6 3.2520	33.3 1.311	M20 3/4	UC216 UC216-49 UC216-50 UC216-51	F216	6.94 7.12 6.99 6.86
UCF217 217-52 217-53 217-55	85 3-1/4 3-5/16 3-7/16	220 8-21/23	175 6-57/64	36 1-27/64	24 15/16	63 2-15/32	23 29/32	87.6 3-7/16	92.6 3-41/64	85.7 3.3740	34.1 1.343	M20 3/4	UC217 UC217-52 UC217-53 UC217-55	F217	8.67 8.79 8.75 8.46
UCF218 218-56	90 3-1/2	235 9-1/4	187 7-23/64	40 1-37/64	24 15/16	68 2-11/16	23 29/32	96.3 3-25/32	101.5 4	96 3.7795	39.7 1.5630	M20 3/4	UC218 UC218-56	F218	10.62 10.73