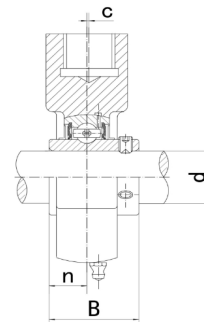
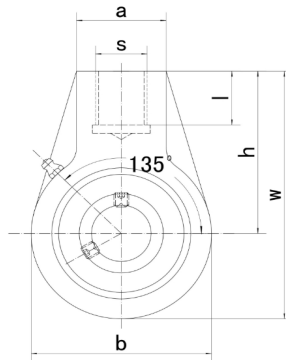


SPANLAGERBLOKKEN TAKE UP UNITS

Gegoten lagerblokken / UCHA201 - UCHA215

UCHA

- * 234... FK
- * 230... FK alternatief
- * 231... FK met kap
- * 235... FK met kap alternatief
- * 200... Neutraal



Type	Code*	Afmetingen (mm / in.)										Lagertype	Huis	Gewicht (kg)
		d	h	w	b	c	a	s	l	B	n			
UCHA201	234201012	12	64	96	64	0	40	M16	19,0	31,0	12,7	UC201	HA204	0,64
201-8	-	1/2	2-33/64	3-25/32	2-33/64	0	1-37/64	G-3/4	3/4	1.2205	0.500	UC201-8		0,63
UCHA202	234202012	15	64	96	64	0	40	M16	19,0	31,0	12,7	UC202	HA204	0,63
202-9	-	9/16	2-33/64	3-25/32	2-33/64	0	1-37/64	G-3/4	3/4	1.2205	0.500	UC202-9		0,63
202-10	-	5/8	2-33/64	3-25/32	2-33/64	0	1-37/64	G-3/4	3/4	1.2205	0.500	UC202-10		0,63
UCHA203	234203012	17	64	96	64	0	40	M16	19,0	31,0	12,7	UC203	HA204	0,62
203-11	-	11/16	2-33/64	3-25/32	2-33/64	0	1-37/64	G-3/4	3/4	1.2205	0.500	UC203-11		0,61
UCHA204	234204012	20	64	96	64	0	40	M16	19,0	31,0	12,7	UC204	HA204	0,60
204-12	-	3/4	2-33/64	3-25/32	2-33/64	0	1-37/64	G-3/4	3/4	1.2205	0.500	UC204-12		0,60
UCHA205	234205012	25	64	103	78	0	40	M20	19,0	34,1	14,3	UC205	HA205	0,79
205-13	-	13/16										UC205-13		0,83
205-14	-	7/8	2-33/64	4-1/16	3-5/64	0	1-37/64	G-3/4	3/4	1.3425	0.563	UC205-14		0,82
205-15	-	15/16										UC205-15		0,80
205-16	-	1										UC205-16		0,79
UCHA206	234206012	30	64	103	78	0	40	M24	19,0	38,1	15,9	UC206	HA206	0,78
206-17	-	1-1/16										UC206-17		0,79
206-18	-	1-1/8	2-33/64	4-1/16	3-5/64	0	1-37/64	G-3/4	3/4	1.5000	0.626	UC206-18		0,80
206-19	-	1-3/16										UC206-19		0,78
206-20	-	1-1/4										UC206-20		0,77
UCHA207	234207012	35	70	116	92	0	40	M24	19,0	42,9	17,5	UC207	HA207	1,10
207-20	-	1-1/4										UC207-20		1,16
207-21	-	1-5/16	2-3/4	4-9/16	3-5/8	0	1-37/64	G-3/4	3/4	1.6890	0.689	UC207-21		1,13
207-22	-	1-3/8										UC207-22		1,10
207-23	-	1-7/16										UC207-23		1,07
UCHA208	234208012	40	73	121	96	2,0	40	M24	19,0	49,2	19,0	UC208	HA208	1,22
208-24	-	1-1/2	2-7/8	4-49/64	3-25/32	5-64	1-37/64	G-3/4	3/4	1.9370	0.748	UC208-24		1,26
208-25	-	1-9/16										UC208-25		1,23
UCHA209	234209012	45	82	136	108	5,0	48	M24	21,0	49,2	19,0	UC209	HA209	1,71
209-26	-	1-5/8										UC209-26		1,81
209-27	-	1-11/16	3-15/64	5-23/64	4-1/4	13/64	1-57/64	G1	53/64	1.9370	0.748	UC209-27		1,77
209-28	-	1-3/4										UC209-28		1,73
UCHA210	234210012	50	83	142	118	5,0	48	M24	21,0	51,6	19,0	UC210	HA210	2,04
210-29	-	1-13/16										UC210-29		2,16
210-30	-	1-7/8	3-17/64	5-19/32	4-41/64	13/64	1-57/64	G1	53/64	2.0315	0.748	UC210-30		2,11
210-31	-	1-15/16										UC210-31		2,06
210-32	-	2										UC210-32		2,02
UCHA211	234211012	55	87	150	126	7,0	60	M24	25,0	55,6	22,2	UC211	HA211	2,45
211-32	-	2										UC211-32		2,60
211-33	-	2-1/16	3-27/64	5-29/32	4-61/64	9/32	2-23/64	G1-1/4	63/64	2.1890	0.874	UC211-33		2,54
211-34	-	2-1/8										UC211-34		2,50
211-35	-	2-3/16										UC211-35		2,43
UCHA212	234212012	60	102	173	142	9,0	60	M24	28,0	65,1	25,4	UC212	HA212	3,56
212-36	-	2-1/4										UC212-36		3,69
212-37	-	2-5/16	4-1/64	6-13/16	5-19/32	23/64	2-23/64	G1-1/4	1-7/64	2.5630	1.000	UC212-37		3,61
212-38	-	2-3/8										UC212-38		3,54
212-39	-	2-7/16										UC212-39		3,47
UCHA213	234213012	65	117	200	166	9,5	70	M24	32,0	65,1	25,4	UC213	HA213	5,44
213-40	-	2-1/2	4-39/64	7-7/8	6-17/32	3/8	2-3/4	G1-1/2	1-17/64	2.5630	1.000	UC213-40		5,53
213-41	-	2-9/16										UC213-41		5,44
UCHA214	234214012	70	117	200	166	9,5	70	M24	32,0	74,6	30,2	UC214	HA214	5,46
214-42	-	2-5/8										UC214-42		5,67
214-43	-	2-11/16	4-39/64	7-7/8	6-17/32	3/8	2-3/4	G1-1/2	1-17/64	2.9370	1.189	UC214-43		5,57
214-44	-	2-3/4										UC214-44		5,47
UCHA215	234215012	75	117	200	166	9,5	70	M24	32,0	77,8	33,3	UC215	HA215	5,41
215-45	-	2-13/16										UC215-45		5,41
215-46	-	2-7/8	4-39/64	7-7/8	6-17/32	3/8	2-3/4	G1-1/2	1-17/64	3.0630	1.311	UC215-46		5,66
215-47	-	2-15/16										UC215-47		5,55
215-48	-	3										UC215-48		5,35