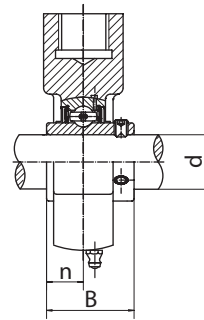
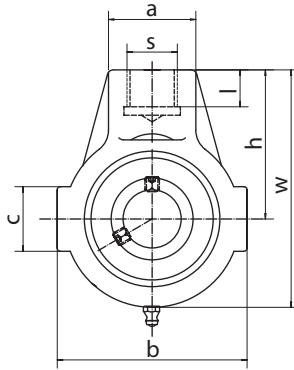


**Screw Conveyor Hanger Units**
**UCHE2 (Normal-duty)**


Unit NO.	Dimensions ( mm / in. )										Bearing No.	Housing No.	Weight (kg)
	d	h	w	b	c	a	s	l	B	n			
UCHE201	12	58	91	65	38	30	M16	21	31	12.7	UC201	HE201	0.61
201-8	1/2										UC201-8		0.60
UCHE202	15										UC202		0.60
202-9	9/16										UC202-9		0.60
202-10	5/8	2-9/32	3-37/64	2-9/16	1-1/2	1-3/16	53/64	1.2205	0.500	UC202-10	HE202	0.60	
UCHE203	17									UC203		0.59	
203-11	11/16									UC203-11		0.58	
UCHE204	20									UC204		0.57	
204-12	3/4	2-33/64	3-57/64	2-3/4	1-1/2	1-3/8	M20	55/64	1.3425	0.563	HE205	UC204-12	0.57
UCHE205	25											UC205	0.71
205-13	13/16											UC205-13	0.75
205-14	7/8											UC205-14	0.74
205-15	15/16	2-33/64	3-57/64	2-3/4	1-1/2	1-3/8	M20	55/64	1.3425	0.563	HE205	UC205-15	0.72
205-16	1											UC205-16	0.71
UCHE206	30											UC206	1.10
206-17	1-1/16											UC206-17	1.11
206-18	1-1/8	2-53/64	4-31/64	3-11/32	1-37/64	1-37/64	M24	15/16	1.5000	0.626	HE206	UC206-18	1.12
206-19	1-3/16											UC206-19	1.10
206-20	1-1/4											UC206-20	1.09
UCHE207	35											UC207	1.23
207-20	1-1/4	3	4-51/64	3-35/64	1-37/64	1-37/64	M24	15/16	1.6890	0.689	HE207	UC207-20	1.29
207-21	1-5/16											UC207-21	1.26
207-22	1-3/8											UC207-22	1.23
207-23	1-7/16											UC207-23	1.20
UCHE208	40	UC208	1.58										
208-24	1-1/2	3-11/32	5-5/16	3-15/16	1-25/32	1-37/64	M24	15/16	1.9370	0.748	HE208	UC208-24	1.62
208-25	1-9/16											UC208-25	1.59
UCHE209	45											UC209	1.97
209-26	1-5/8	3-35/64	5-45/64	4-21/64	1-13/16	1-37/64	M24	15/16	1.9370	0.748	HE209	UC209-26	2.07
209-27	1-11/16											UC209-27	2.03
209-28	1-3/4											UC209-28	1.99
UCHE210	50											UC210	1.88
210-29	1-13/16	3-35/64	5-45/64	4-21/64	1-13/16	1-37/64	M24	15/16	2.0315	0.748	HE210	UC210-29	2.00
210-30	1-7/8											UC210-30	1.95
210-31	1-15/16											UC210-31	1.90
210-32	2											UC210-32	1.86