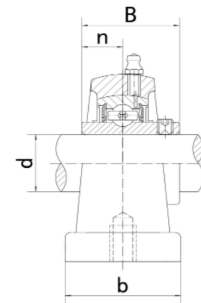
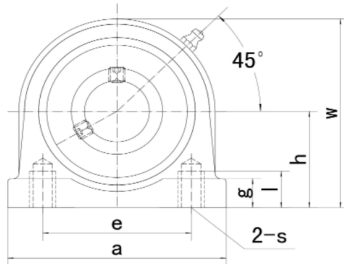


STAANDE LAGERBLOKKEN PILLOW BLOCK UNITS

Gegoten lagerblokken / UCSPW201 - UCSPW203 & UCPW204 - UCPW210

UCPW(=UCTB)

- * 234... FK
- * 230... FK alternatief
- * 231... FK met kap
- * 235... FK met kap alternatief
- * 200... Neutraal



Type	Code*	Afmetingen (mm / in.)											Bout (mm)	Lagertype	Huis	Gewicht (kg)
		d	h	a	e	b	s	l	g	w	B	n				
UCSPW201	234201014	12	30,2	63,0	47,0	30	M8	10	11,0	57,0	27,4	11,5	M8	UCS201	PW203	0,48
201-8	-	1/2	1-3/16	2-31/64	1-27/32	1-3/16		25/64	7/16	2-1/4	1.0787	0.4528		UCS201-8		0,47
UCSPW202	234202014	15	30,2	63,0	47,0	30	M8	10	11,0	57,0	27,4	11,5	M8	UCS202	PW203	0,47
202-9	-	9/16	1-3/16	2-31/64	1-27/32	1-3/16		25/64	7/16	2-1/4	1.0787	0.4528		UCS202-9		0,47
202-10	-	5/8												UCS202-10		0,47
UCSPW203	234203014	17	30,2	63,0	47,0	30	M8	10	11,0	57,0	27,4	11,5	M8	UCS203	PW203	0,46
203-11	-	11/16	1-3/16	2-31/64	1-27/32	1-3/16		25/64	7/16	2-1/4	1.0787	0.4528		UCS203-11		0,45
UCPW204	234204014	20	33,3	65,0	50,8	32	M8	15	14,5	64	31,0	12,7	M8	UC204	PW204	0,49
204-12	-	3/4	1-5/16	2-9/16	2	1-17/64		19/32	37/64	2-33/64	1.2205	0.500		UC204-12		0,49
UCPW205	234205014	25	36,5	70,0	50,8	36	M10	15	13,0	70,0	34,1	14,3	M10	UC205	PW205	0,59
205-13	-	13/16												UC205-13		0,63
205-14	-	7/8	1-7/16	2-3/4	2	1-27/64		19/32	33/64	2-3/4	1.3425	0.563		UC205-14		0,62
205-15	-	15/16												UC205-15		0,60
205-16	-	1												UC205-16		0,59
UCPW206	234206014	30	42,9	98,0	76,2	40	M10	18	16,0	82,0	38,1	15,9	M10	UC206	PW206	1,11
206-17	-	1-1/16												UC206-17		1,12
206-18	-	1-1/8	1-11/16	3-55/64	3	1-37/64		45/64	5/8	3-15/64	1.5000	0.626		UC206-18		1,13
206-19	-	1-3/16												UC206-19		1,11
206-20	-	1-1/4												UC206-20		1,10
UCPW207	234207014	35	47,6	103,0	82,6	45	M10	20	19,0	93,0	42,9	17,5	M10	UC207	PW207	1,44
207-20	-	1-1/4												UC207-20		1,50
207-21	-	1-5/16	1-7/8	4-1/16	3-1/4	1-49/64		25/32	3/4	3-21/32	1.6890	0.689		UC207-21		1,47
207-22	-	1-3/8												UC207-22		1,44
207-23	-	1-7/16												UC207-23		1,41
UCPW208	234208014	40	49,2	116,0	88,9	48	M12	20	19,0	99,0	49,2	19,0	M12	UC208	PW208	1,76
208-24	-	1-1/2	1-15/16	4-9/16	3-1/2	1-57/64		25/32	3/4	3-57/64	1.9370	0.748		UC208-24		1,80
208-25	-	1-9/16												UC208-25		1,77
UCPW209	234209014	45	53,9	120,0	95,3	48	M12	25	19,0	107,0	49,2	19,0	M12	UC209	PW209	1,99
209-26	-	1-5/8	2-1/8	4-23/32	3-3/4	1-57/64		63/64	3/4	4-7/32	1.9370	0.748		UC209-26		2,09
209-27	-	1-11/16												UC209-27		2,05
209-28	-	1-3/4												UC209-28		2,01
UCPW210	234210014	50	57,2	135,0	101,6	54	M16	25	22,0	115,0	51,6	19,0	M16	UC210	PW210	2,64
210-29	-	1-13/16	2-1/4	5-5/16	4	2-1/8		63/64	55/64	4-17/32	2.0315	0.748		UC210-29		2,76
210-30	-	1-7/8												UC210-30		2,71
210-31	-	1-15/16												UC210-31		2,66
210-32	-	2												UC210-32		2,62