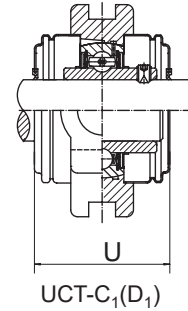
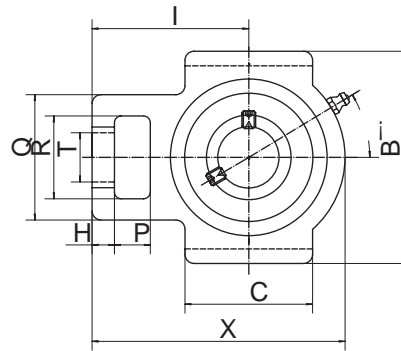
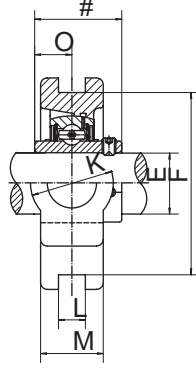




Take-up Units

UCT2 (Normal-duty)



Unit NO.	Dimensions (mm / in.)																	Bearing No.	Housing No.	Weight (kg)
	d	o	g	p	q	s	b	k	e	a	w	j	l	h	t	B	n			
6 S 5 201-8	1/2	5/8	25/64	2-1/64	1-1/4	3/4	2-1/64	15/32	2-63/64	3-1/2	3-11/16	1-1/4	53/64	2-13/32	1-3/4	1.2205	0.500	UC201 UC201-8	T201	0.77 0.76
6 S 5 202-9 202-10	9/16 5/8	5/8	25/64	2-1/64	1-1/4	3/4	2-1/64	15/32	2-63/64	3-1/2	3-11/16	1-1/4	53/64	2-13/32	1-3/4	1.2205	0.500	UC202 UC202-9 UC202-10	T202	0.76 0.76 0.76
6 S 5 203-11	11/16	5/8	25/64	2-1/64	1-1/4	3/4	2-1/64	15/32	2-63/64	3-1/2	3-11/16	1-1/4	53/64	2-13/32	1-3/4	1.2205	0.500	UC203 UC203-11	T203	0.75 0.74
6 S 5 204-12	3/4	5/8	25/64	2-1/64	1-1/4	3/4	2-1/64	15/32	2-63/64	3-1/2	3-11/16	1-1/4	53/64	2-13/32	1-3/4	1.2205	0.500	UC204 UC204-12	T204	0.73 0.73
6 S 5 205-13 205-14 205-15 205-16	13/16 7/8 15/16 1	5/8	25/64	2-1/64	1-1/4	3/4	2-1/64	15/32	2-63/64	3-1/2	3-13/16	1-1/4	15/16	2-7/16	1-7/8	1.3425	0.563	UC205 UC205-13 UC205-14 UC205-15 UC205-16	T205	0.80 0.84 0.83 0.81 0.80
6 S 5 206-17 206-18 206-19 206-20	1-1/16 1-1/8 1-3/16 1-1/4	5/8	25/64	2-7/32	1-29/64	55/64	2-1/4	15/32	3-1/2	4-1/64	4-29/64	1-29/64	1-3/32	2-3/4	2-3/32	1.5000	0.626	UC206 UC206-17 UC206-18 UC206-19 UC206-20	T206	1.22 1.23 1.24 1.22 1.21
6 S 5 207-20 207-21 207-22 207-23	1-1/4 1-5/16 1-3/8 1-7/16	5/8	33/64	2-33/64	1-29/64	55/64	2-33/64	15/32	3-1/2	4-1/64	5-5/64	1-29/64	1-3/16	3-5/64	2-11/32	1.6890	0.689	UC207 UC207-20 UC207-21 UC207-22 UC207-23	T207	1.57 1.63 1.60 1.57 1.54
6 S 5 208-24 208-25	1-1/2 1-9/16	3/4	5/8	3-17/64	1-15/16	1-9/64	3-17/64	5/8	4-1/64	4-31/64	5-43/64	1-15/16	1-19/64	3-1/2	2-23/32	1.9370	0.748	UC208 UC208-24 UC208-25	T208	2.31 2.35 2.32
6 S 5 209-26 209-27 209-28	1-5/8 1-11/16 1-3/4	3/4	5/8	3-17/64	1-15/16	1-9/64	3-17/64	5/8	4-1/64	4-39/64	5-43/64	1-15/16	1-3/8	3-27/64	2-23/32	1.9370	0.748	UC209 UC209-26 UC209-27 UC209-28	T209	2.34 2.44 2.40 2.36
6 S 5 210-29 210-30 210-31 210-32	1-13/16 1-7/8 1-15/16 2	3/4	5/8	3-17/64	1-15/16	1-9/64	3-17/64	5/8	4-1/64	4-39/64	5-55/64	1-15/16	1-29/64	3-35/64	2-15/16	2.0315	0.748	UC210 UC210-29 UC210-30 UC210-31 UC210-32	T210	2.47 2.59 2.54 2.49 2.45
6 S 5 211-32 211-33 211-34 211-35	2 2-1/16 2-1/8 2-3/16	63/64	3/4	4-1/64	2-1/32	1-3/8	3-3/4	55/64	5-1/8	5-3/4	6-47/64	2-33/64	1-1/2	4-11/64	3	2.1890	0.874	UC211 UC211-32 UC211-33 UC211-34 UC211-35	T211	3.74 3.89 3.83 3.79 3.72
6 S 5 212-36 212-37 212-38 212-39	2-1/4 2-5/16 2-3/8 2-7/16	1-17/64	3/4	4-1/64	2-1/32	1-3/8	4-1/64	55/64	5-1/8	5-3/4	7-41/64	2-33/64	1-21/32	4-11/16	3-1/2	2.5630	1.000	UC212 UC212-36 UC212-37 UC212-38 UC212-39	T212	4.58 4.71 4.63 4.56 4.49
6 S 5 213-40 213-41	2-1/2 2-9/16	1-17/64	53/64	4-3/8	2-3/4	1-39/64	4-49/64	1-1/32	5-15/16	6-37/64	8-13/16	2-3/4	1-23/32	5-25/64	3-1/2	2.5630	1.000	UC213 UC213-40 UC213-41	T213	6.60 6.69 6.60
6 S 5 214-42 214-43 214-44	2-5/8 2-11/16 2-3/4	1-17/64	53/64	4-3/8	2-3/4	1-39/64	4-49/64	1-1/32	5-15/16	6-37/64	8-13/16	2-3/4	1-13/16	5-25/64	3-55/64	2.937	1.189	UC214 UC214-42 UC214-43 UC214-44	T214	6.74 6.95 6.85 6.75
6 S 5 215-45 215-46 215-47 215-48	2-13/16 2-7/8 2-15/16 3	1-17/64	53/64	4-3/8	2-3/4	1-39/64	4-49/64	1-1/32	5-15/16	6-37/64	9-9/64	2-3/4	1-57/64	5-33/64	3-57/64	3.0630	1.311	UC215 UC215-45 UC215-46 UC215-47 UC215-48	T215	7.19 7.19 7.44 7.33 7.13
6 S 5 216-49 216-50 216-51	3-1/16 3-1/8 3-3/16	1-17/64	53/64	4-3/8	2-3/4	1-39/64	4-49/64	1-1/32	6-1/2	7-1/4	9-1/4	2-3/4	2	5-33/64	4-19/64	3.2520	1.311	UC216 UC216-49 UC216-50 UC216-51	T216	8.08 8.26 8.13 8.00
6 S 5 217-52 217-53 217-55	3-1/4 3-5/16 3-7/16	1-1/2	1-9/64	4-7/8	2-7/8	1-57/64	6-3/16	1-3/16	6-13/16	7-51/64	10-15/64	2-7/8	2-1/8	6-3/8	4-29/64	3.3740	1.343	UC217 UC217-52 UC217-53 UC217-55	T217	10.66 10.78 10.74 10.45
6 S 5 218-56	3-1/2	1-37/64	1-3/16	5-1/8	3-5/32	1-57/64	5-35/64	1-3/16	7-31/64	8-15/32	10-53/64	3-5/32	2-11/64	6-11/16	4-27/32	3.7795	1.563	UC218 UC218-56	T218	12.19 12.30